

PowerRay Quick Start Guide

PowerVision

PowerRay

PowerRay Introduction	1-3
PowerRay Vehicle	
Base Station	
Remote control	
FishFinder	4
Bait Drop	

Diving Preparation

Battery and Charging	5-7
Charging	
Check Battery Levels	
Prepare PowerRay	8-11
Prepare Remote Controller	
Prepare App	
Vision+ App Functions	
Prepare VR	

Diving and Safety

Locking and Unlocking PowerRay	12
Remote Control Modes	13
Using the FishFinder Sonar	14
Diving safety	15

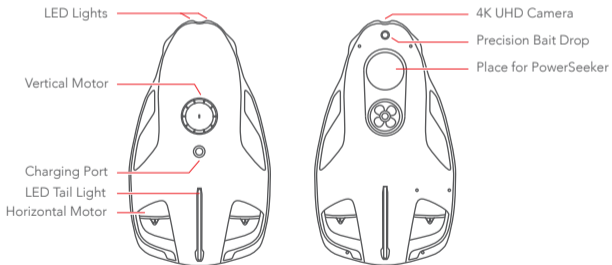
01

02

03

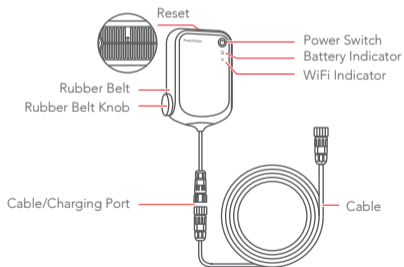
PowerRay Introduction: PowerRay Vehicle

The PowerVision PowerRay can dive as deep as 98 feet underwater in either fresh water or salt water. It can be used for underwater photography, fish detecting, and fish luring. Users can operate the PowerRay through the PowerVision Edition of ZEISS VR ONE Plus Goggles, transmitter, or app to stream real-time video. Its integrated 4K UHD camera has 12 million pixels for underwater photography and videography.



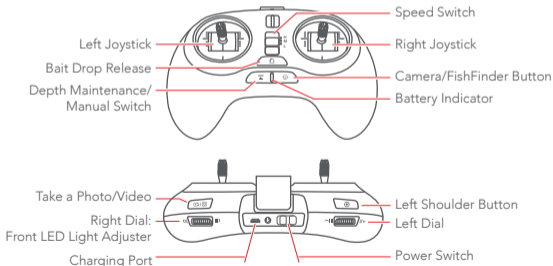
Base Station

The PowerRay base station connects to the submersible through the tether cable. By connecting to the base station, the user can control the PowerRay camera with the remote controller, VR goggles, or a cell phone. The base station battery is 3000mAh and can work for up to 3 hours. Users can check the battery level through the battery indicator. The base station has a rubber belt that helps prevent the unit from slipping into the water.



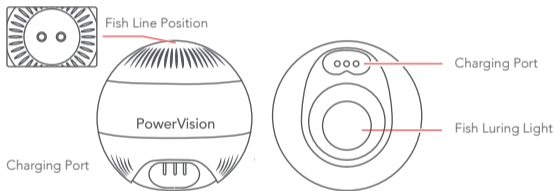
Remote Controller

PowerRay's remote controller connects with the base station wirelessly. Functions include operating the vehicle, LED lighting adjustment, speed adjustment, underwater photography, underwater videography, precision remote bait drop, fixed depth settings and more. Users can operate PowerRay easily through the remote control. The built-in rechargeable battery's capacity is 3000mAh and can operate continuously for up to 20 hours. Users can check the battery level through the battery indicator.



FishFinder

PowerRay FishFinder sonar can detect fish and underwater landscapes up to 130 feet below the surface and sends real-time images to the app. The sonar is equipped with a fish luring light, and can be attached to the PowerRay or used as a stand-alone sonar device.

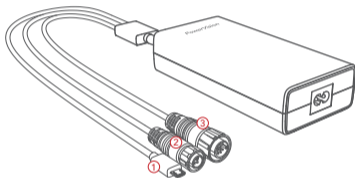


Bait Drop

Please put the fish line on the hook, and operate the PowerRay to drop the bait with the remote controller or the Vision+ App.

Charging

All-in-one charger: The PowerVision charging adaptor can charge the PowerRay, remote control, and the base station at the same time. You can also charge your cell phone with the USB port on the adaptor.



① Remote Controller
3.5 hours to fully charge



② Base Station
2.5 hours to fully charge

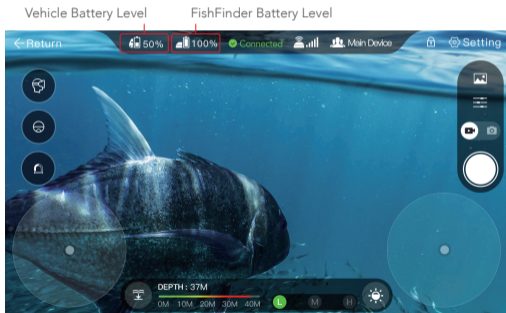


③ PowerRay Vehicle
2.5 hours to fully charge

Battery Levels

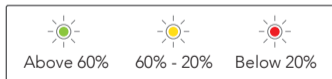
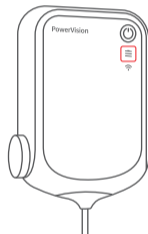
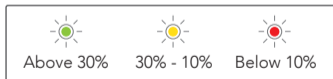
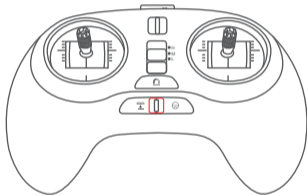
Vehicle: PowerRay vehicle battery level is displayed on the Vision+ App interface.

FishFinder: The FishFinder will automatically turn on when the charging port touches the water. It will turn off 1 minute after leaving the water. Battery level is displayed on the Vision+ App interface.



Battery Levels

Remote Controller and Base Station: Check battery indicator, marked in red below.



Prepare PowerRay



1. Turn on the base station by pressing and holding the power button for 3 seconds.



2. Plug the cable into the base station.



3. Open the vehicle power port protector.



4. Plug the other side of the cable tightly into PowerRay.

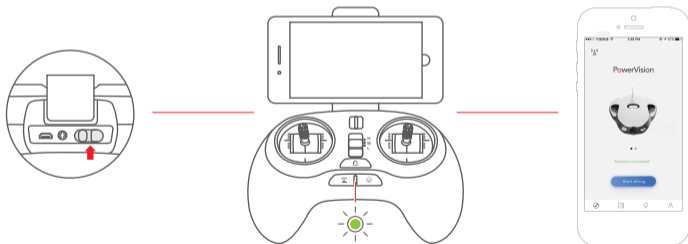
Note: Make sure to dry the port immediately after use!



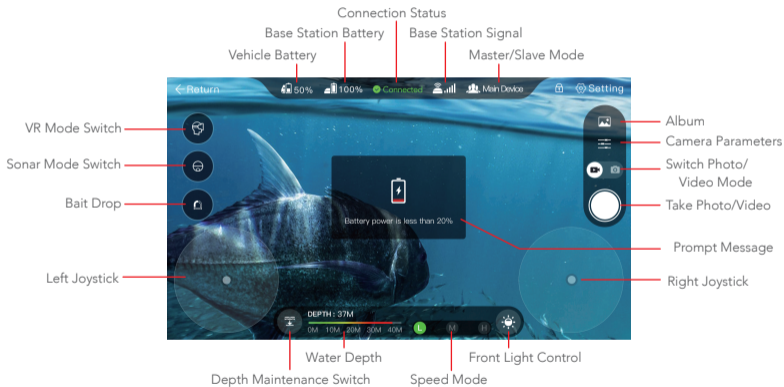
5. Use a mobile device to turn on the WiFi, connect to "PRA_Station_001" (default password: 123456780)

Prepare the Remote Controller and the App

Cell phones or tablets can be mounted on the bracket of the remote control. Turn on the remote controller. It will start searching for the base station, so make sure that unit is powered on. The remote controller light will turn green when it is connected. You will hear a notification sound when connection is complete. Make sure you connect to the Wi-Fi to (PRA Station). Launch the Vision+ App and switch to PowerRay. When it shows "Device is connected," click on "Start Diving" and you're ready to explore!



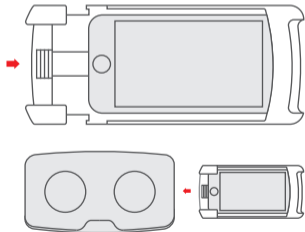
"Vision+" App Functions



Prepare PowerVision Edition of ZEISS VR ONE Plus

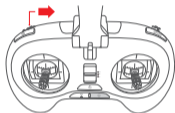
Switch to VR mode in the App and slide your mobile device into the VR glasses.

- Put your phone into the bracket and push back the bottom cover.
- Insert the bracket into the PowerVision Edition of ZEISS VR ONE Plus goggles.
- Head gesture function activation: Press down on the left shutter button to enable this function. You will now be able to guide the PowerRay through head gesture commands. Once you're done, push the left shutter button again to release this feature.

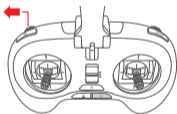


Locking and Unlocking PowerRay

To prevent users from spinning the propellers accidentally outside the water, PowerRay pilots need to unlock the PowerRay to enable the motors.



Unlock: Dial the left finger wheel to the right and press camera/fish finder button for 1 second until it vibrates.



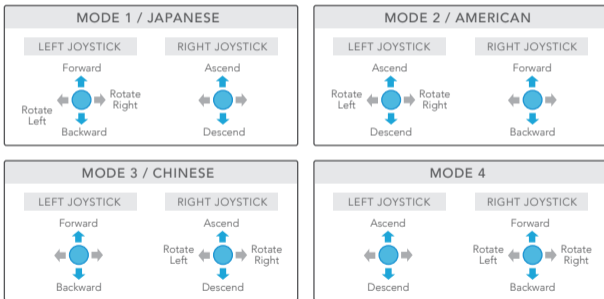
Lock: Dial the left finger wheel to the left and press camera/fish finder button for 1 second until it vibrates.

Speed Controls: Speed of the vehicle can be adjusted by toggling the switch between the two joysticks (High, Medium, and Low speed).




Remote Control Modes

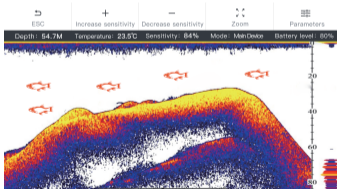
PowerRay has 4 modes in which to control the submersible. The remote control's default mode is "MODE 4." Users can choose the mode that best fits their control of the PowerRay through the App.



Using the FishFinder Sonar

1. The FishFinder must be installed on the PowerRay before connecting the power cable to the Ray.
2. Once the PowerRay is powered on, the FishFinder will start to work when it enters the water.
3. The FishFinder will automatically connect to the PowerRay. You can also connect to the FishFinder Wi-Fi, "PSE_xxx". No password is needed when the FishFinder is bobbing on the water surface.
4. You can also click on Vision+ App icon  to switch to the FishFinder interface.

Note: Display parameters can be adjusted to change the display effect. You can also turn on/off the fish detection notification.





Dive in
open water



Keep within
visual range



Do not exceed
30M depth



Turn off the base
station to save battery



Do not throw
into water



Do not pull the cable
with strong force



Do not spin motors
in the air outside of
the water



Do not touch
spinning propellers



Avoid hot
environments



Avoid waterweeds



Keep base station
away from water

PowerVision

www.powervision.me