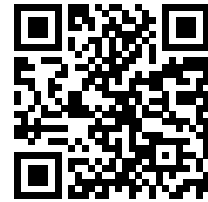




ZEUS® S QUICK START GUIDE



Scan here
to save a copy



B&G Zeus® S multi-function display is available in three sizes. This document describes the basic controls of the Zeus® S.

For more operational information, refer to the included **Basic Operation Guide**.

For the latest version of this document and other app guides, we recommend you download the B&G mobile app, scan the QR code® above, and connect with your Zeus® S, or visit: www.bandg.com/downloads/zeus-s.

→ **Note:** Refer to the enclosed installation manual before you turn on the unit.

BASIC CONTROLS

To turn the unit on, press and hold the power button. A beep indicates the unit is powering up.

To turn the unit off, press and hold the power button, or select **Power off** from the quick access menu.



- A Power button
- B Touchscreen

External power control


Power to the unit can be controlled by an external switch or other units. For details about available power options, refer to the unit's installation manual.

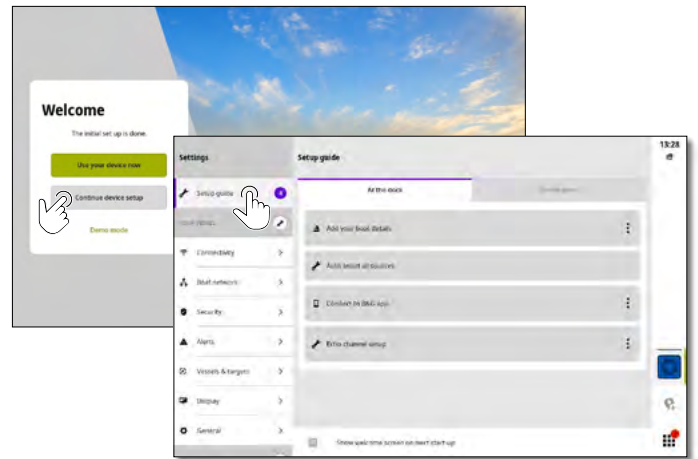
→ **Note:** If your MFD is controlled by an external power source, it can't be powered off using the power button. Pressing and holding the power button puts the unit in standby mode. To wake the unit, press the power button again.

FIRST STARTUP

When you start the unit for the first time, or when you start it after a factory reset, you need to complete the initial setup for language, country, timezone, scan for an existing boat network, and follow the on screen prompts.

SETUP GUIDE

On the **Welcome** screen, select **Continue device setup** to complete the device settings. Alternatively, select the settings icon  then select **Setup guide** to set up the unit.

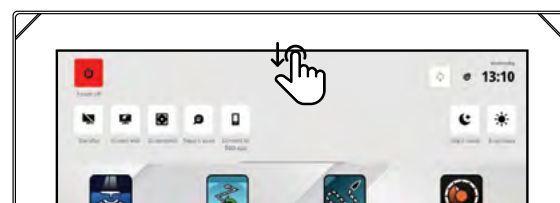


→ **Note:** It is important to set up the MFD for accurate navigation and safety at sea.

QUICK ACCESS MENU


The quick access menu gives you immediate access to basic system settings and features. Press the power button once to display the quick access menu or swipe down from the top of the screen.

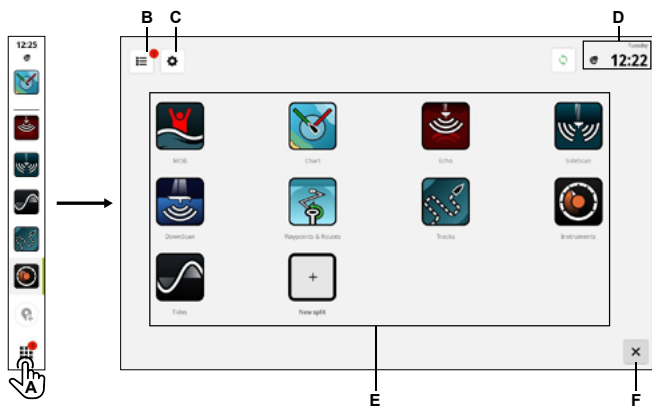
The image below illustrates the screen from a unit connected to an external power control.



→ **Note:** To hide the quick access menu, swipe up or tap anywhere on the screen.

HOME SCREEN

To open your home screen, select the home button  on the recent apps panel. All apps, settings, and alert messages can be accessed from the home screen.



- A Home button — select to view the home screen
 - B Alerts list — select to view recent and historic system alerts
 - C Settings — select to view MFD settings
 - D Status bar — displays the current day and time
 - E Apps — displays a grid layout of all system and custom app groups
 - F Exit — select to exit the home screen and return to the last used app
- **Note:** The exit button (F) is disabled if there are no active apps.

APPS

An app is a program for a unique feature or function. The availability of some apps depends on the size of your unit and the hardware that is connected.

For app-specific user guides, download the B&G app on your mobile device and connect it to your display unit, or visit: www.bandg.com/downloads/zeus-s.

ALERTS

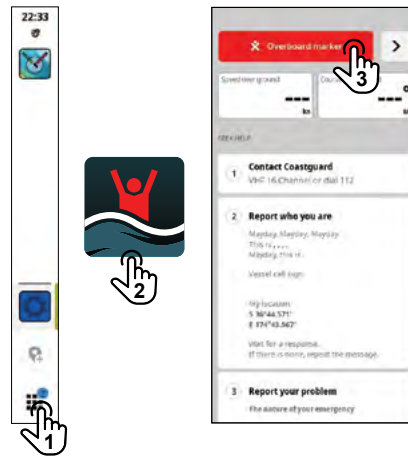
The unit continuously monitors connected sensors and devices for alerts, system faults, and environmental changes. Alerts can be configured by setting up rules.



EMERGENCY AND MOB

Use the Man Overboard (MOB) app for emergency situations. To open the app, select **MOB** on the home screen.

Select **Overboard marker** to create a MOB waypoint at your vessel's location and follow the instructions to respond to the emergency.



→ **Note:** Use the Waypoints & Routes app to remove your MOB waypoint.

CONNECT TO MOBILE APP

Select **Connect to B&G app** from the quick access menu to connect your mobile device (phone or tablet) to the unit.

Download the **B&G: Sailing & Navigation** app from the App Store® or Google Play®, then scan the QR® code.



Once connected, you can use the mobile app to:

- View and download app guides
- Register your display unit
- Create your own waypoints, routes and tracks
- Download and apply unit software updates

→ **Note:** An active internet connection is required for this feature.

TRADEMARKS

- B&G® is a trademark of Navico Holding AS.
- Zeus® is a trademark of Navico Holding AS.
- QR Code® is a trademark of Denso Wave Incorporated.
- App Store® and App Store Logos are trademarks of Apple Inc.
- Google Play® and Google Play logos are trademarks of Google LLC.

Copyright ©2023 Navico Holding AS

®Reg U.S. Pat. & Tm. Off. and ™ common law marks

Visit www.navico.com/intellectual-property to review the global trademark rights and accreditations for Navico Holding AS and other entities.