

B&G[®]

TRITON™ EDGE™

QUICK START GUIDE

ENGLISH



www.bandg.com

⚠ WARNING: Refer to important safety information on the Safety, Disclaimers and Compliance sheet. Review all warnings, limitations, and disclaimers before using this product.

Trademarks

[®]Reg. U.S. Pat. & Tm. Off. and [™] common law marks. Visit www.navico.com/intellectual-property to review the global trademark rights and accreditations for Navico Holding AS and other entities.

- Navico[®] is a trademark of Navico Holding AS.
- B&G[®] is a trademark of Navico Holding AS.
- Triton[™] is a trademark of Navico Holding AS.
- Edge[™] is a trademark of Navico Holding AS.
- App Store[®] and App Store Logos are trademarks of Apple Inc.
- Firefox[®] is a trademark of the Mozilla Foundation.
- Google Chrome[®] is a trademark of Google LLC.
- Google Play[®] and Google Play logos are trademarks of Google LLC.
- Microsoft Edge[®] is a trademark of Microsoft Corporation.
- NMEA 2000[®] is a trademark of the National Marine Electronics Association.
- QR code[®] is a trademark of Denso Wave Incorporated.
- Safari[®] is a trademark of Apple Inc.
- Wi-Fi[®] is a trademark of Wi-Fi Alliance.

Copyright

Copyright ©2022 Navico Holding AS.

Warranty

This product's warranty is supplied as a separate document.

Safety, disclaimer and compliance

This product's safety, disclaimer and compliance statements are supplied as a separate document.

Internet usage

Some features in this product use an internet connection to perform data downloads and uploads. Internet usage via a connected mobile/cell phone internet connection or a pay-per-MB type internet connection may require large data usage. Your service provider may charge you based on the amount of data you transfer. If you are unsure, contact your service provider to confirm rates and restrictions. Contact your service provider for information about charges and data download restrictions.

More information

Document version: 001

This document was prepared using software version 1.0

Features described and illustrated in this guide may vary from your unit due to continuous development of the software.

For the latest version of this document in supported languages, and other related documentation, visit www.bandg.com/downloads/tritonedge.



CONTENTS

4	Registration
4	Save information
4	Download the B&G app
4	Register your Triton Edge
5	Connect to Triton Edge
5	Connect via Wi-Fi® hotspot
5	Access the web interface via Wi-Fi® hotspot
6	Connect via a wired connection
6	Use a multi-function display to find the IP address
7	First start up
8	The web interface: Main menu
9	Setup guide
9	Tasks at the dock
10	Tasks on the water
11	Dashboard
12	Sailing data and sensors
12	Sailing data
13	Sensors
14	Correction tables
14	Open a correction table
15	Edit a correction table
16	Data recording
16	Start a recording manually
16	Add events
16	Access data recordings
17	Connect to the internet
18	Upload data recordings
19	Export recorded files
19	Delete recorded files
20	HV displays
21	Software updates
21	Install a software update
22	Install an update from a downloaded file

REGISTRATION

Save information

Important information unique to your Triton Edge sailing processor, with a QR code®, is printed on a card enclosed with the packaging. A sample is shown below.



We recommend saving these details in a safe place on your vessel, so that you can connect a device to the Triton Edge at any time.

→ **Note:** *The same information and QR code® are on the back of the sailing processor.*

Download the B&G app

Use your smartphone to scan the QR code® on the card enclosed with the packaging.

This will link you to the App Store® or Google Play® (as applicable) to download and install the B&G companion app.

After you have installed the B&G app, and your mobile is connected to the internet, you can use the app to:

- Register your sailing processor
- Access manuals and installation guides
- Download sailing data recordings
- Download and apply software updates to the sailing processor.

Visit the B&G website, www.bandg.com, to see more information about the app.

Register your Triton Edge

Your Triton Edge needs to be registered to your personal B&G profile so that you can upload and access your sailing data.

Connect your smartphone to the internet, and open the B&G app.

In the app, open the **My devices** menu, and follow the instructions under **Add a device**.

The companion app will invite you to scan the QR code® card that came with the sailing processor (this QR code® is also on the back of the Triton Edge). At the completion of all the steps, the Triton Edge will be registered to the account that was used to sign into the companion app.

→ **Note:** *The Triton Edge can only be actively registered on one account.*

To unregister the Triton Edge from your B&G account, connect your mobile device to the internet and use the companion app to navigate to the **My devices** menu. Select the Triton Edge sailing processor, then select **Remove device**.

→ **Note:** *The mobile device must be connected to the internet to register (or unregister) the Triton Edge.*



CONNECT TO TRITON EDGE

Communication with the sailing processor is via a user-friendly web interface.

Access the web interface by connecting to the Triton Edge and using a compatible web browser such as Google Chrome®, Microsoft Edge®, Firefox®, or Safari®.

You can connect a mobile device to the sailing processor using either the sailing processor's Wi-Fi® hotspot, or via an Ethernet port

→ *Note: Follow the instructions in the Installation Guide to install the Triton Edge on your vessel, and turn it on, before attempting to connect to it.*

Connect via Wi-Fi® hotspot

When the Triton Edge is powered on, it creates a Wi-Fi® hotspot. (The Wi-Fi® status light on the front of the unit is blue when the hotspot is operating normally.)

To connect your mobile device to the hotspot, open Wi-Fi® (network) settings on your mobile device.

When your device is within range of the hotspot, the hotspot's name (SSID) will be visible in the list of available networks.

→ *Note: The full name of the Triton Edge hotspot (SSID) and its security key (password) are printed with a QR code® on a card enclosed with the packaging. Save these details in a safe place on your vessel, so that you can connect a device to the Triton Edge at any time.*

Enter the security key (password) from the card when prompted, and select Connect/Join/OK (as applicable) to complete the connection.

Access the web interface via Wi-Fi® hotspot

With your mobile device connected to the unit's wireless hotspot, access the web interface using the IP address **192.168.76.1**. Simply type the IP address into your web browser.

→ *Note: The IP address **192.168.76.1** only works when the device you're using is connected to the Wi-Fi® hotspot.*

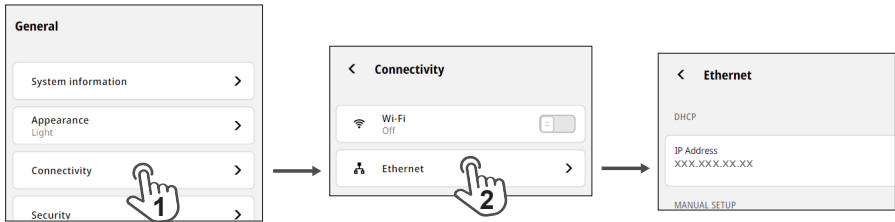


Connect via a wired connection

If the sailing processor is connected to Ethernet, an IP address will be assigned to it.

→ **Note:** The IP address assigned to the Triton Edge is required to access the web interface.

First, connect a device to the unit's wireless hotspot and access the web interface using the IP address **192.168.76.1**, as outlined above. Using the web interface, open the menus **General > Connectivity > Ethernet** to see the IP address for the Triton Edge on the network.



When connected to the same network as the sailing processor, use the IP address listed under **Ethernet** to access the web interface via a web browser.

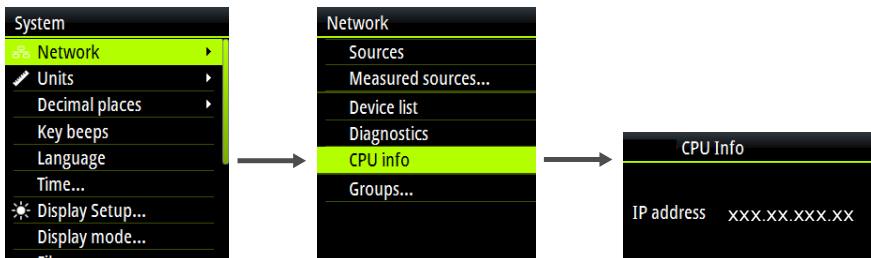
→ **Note:** The web interface is only available when connected to the Triton Edge via the hotspot, or via Ethernet. For security, the web interface is not available over a Wi-Fi® network.

Use a multi-function display to find the IP address

As an alternative to using the web interface to find the sailing processor's IP address, you can use a multi-function display (MFD) or other compatible instrument.

To view the IP address using a compatible display, navigate to the **CPU** or **CPU info** menus on the instrument display.

On an H5000 Graphic Display or Triton² display, the menus appear as below:



→ **Note:** In addition to finding the IP address of the sailing processor, a compatible display or MFD can be used to update the sailing processor's settings and correction tables. However, the web interface is recommended for a detailed system setup.



FIRST START UP

The first time you start the sailing processor and access the web interface, prompts will guide you through system settings such as naming your sailing processor; choosing your preferred units for data; and setting the time zone.

This onboarding process is only repeated following a factory reset.

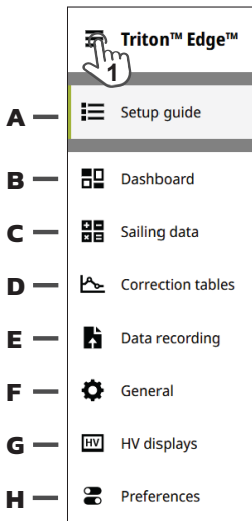
Any of these settings may be adjusted later through the **Preferences** and **General** menus, which are accessed from the main menu on the web interface.



THE WEB INTERFACE: MAIN MENU

→ *Note: Refer to **Connect via Wi-Fi® hotspot** on page 5 for instructions on how to access the web interface.*

Toggle the list icon (1) on the main menu to reveal the list of menus, or collapse the list to give yourself more room on-screen.



A Setup guide—Lists tasks for setting up and checking your sailing instruments.

→ *Note: The **Setup guide** is only present when there are setup tasks awaiting your attention.*

B Dashboard—Overview of data values and sensor statuses.

C Sailing data—Displays calculated and measured values; gives access to sensors for checking and configuration.

D Correction tables—Gives access to advanced calibration of boat speed, true wind angle, and true wind speed.

E Data recording—Start a data recording; configure settings for data recording; upload and export sailing data.

F General—Gives access to general system settings such as network connections and software version.

G HV displays—Allows you to configure and control your HV display(s) using the Triton Edge web interface.

→ *Note: This menu option is only present when one or more HV displays is connected.*


H Preferences—Gives access to options related to the web interface display, such as units of measurement.

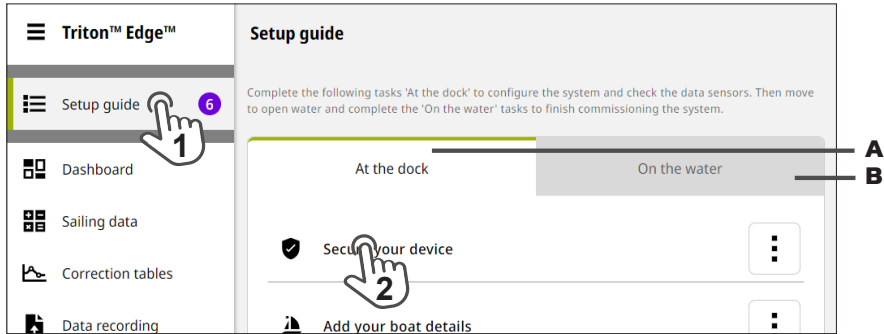


SETUP GUIDE

The **Setup guide** opens automatically following the onboarding sequence. Follow the prompts and complete the tasks in the order they are presented. Some data-entry and source selection tasks are able to be completed on your vessel at the dock (**A**). Tasks listed under **On the water** (**B**) require you to maneuver the vessel at sea.

To return to the setup guide from a different screen, select **Setup guide** (1). To start a task, select it (2) in the setup guide.

To remove a task from the setup guide, select the more icon  then **Dismiss**.



→ *Note: The setup guide disappears from the main menu when all tasks have been completed or dismissed. All tasks can be reopened and adjusted later.*

Tasks at the dock

Secure your device

Protect your settings with a PIN. To revisit this task later, access it under **General > Security > Secure your device**.

Add your boat details

Enter your vessel's name, type, model, and dimensions. To revisit this task later, access it under **General > My vessel > Add your boat details**.

Select measured sources

Select the configurations and core sensors to be used by the Triton Edge for boat speed and wind. (This should be performed before running an Auto source selection.) To revisit this task later, access it under **General > System information > Sources**.

Review source selection

If your vessel has an instrument system with more than one sensor for a data category, you can swap which sensor is used. To revisit this task later, access it under **General > System information > Sources**. The **Auto source selection** wizard is also found under this menu, and if used, will nominate sensors for you.



Review sailing data

Lists key data, and indicates the status of related data sources. A green status indicates a reading is valid; a red status indicates that a reading isn't valid. Navigate to **Sailing data** in the main menu to review the readings at any time.

Review depth offset

Enter an offset so that the depth reading displays depth below keel or, if preferred, depth measured from the water surface. To revisit this task later, access it under **Sailing data > Sensors > Depth**.

Review GPS offset

Enter the position of your GPS receiver relative to vessel's bow to get accurate startline values. To revisit this task later, access it under **Sailing data > Sensors > GPS > Operations**.

→ *Note: Your vessel's beam and length must be entered for GPS offset to work. To enter beam and length, navigate to **General > My vessel > Boat dimensions**.*

Connect to B&G cloud

Manage preferences for what is shared with B&G, and when. To revisit this setting later, access **Preferences** from the main menu.

Tasks on the water

Calibrate the boat speed

In a sea trial, follow the steps in the calibration wizard to calibrate your boat speed sensor. To revisit this task later, access it under **Sailing data > Sensors > Boat speed > Input**.

Calibrate the compass

In a sea trial, follow the steps in the calibration wizard to calibrate your compass. To revisit this task later, access it under **Sailing data > Sensors > Heading > Input**.

Calibrate the wind angle offset

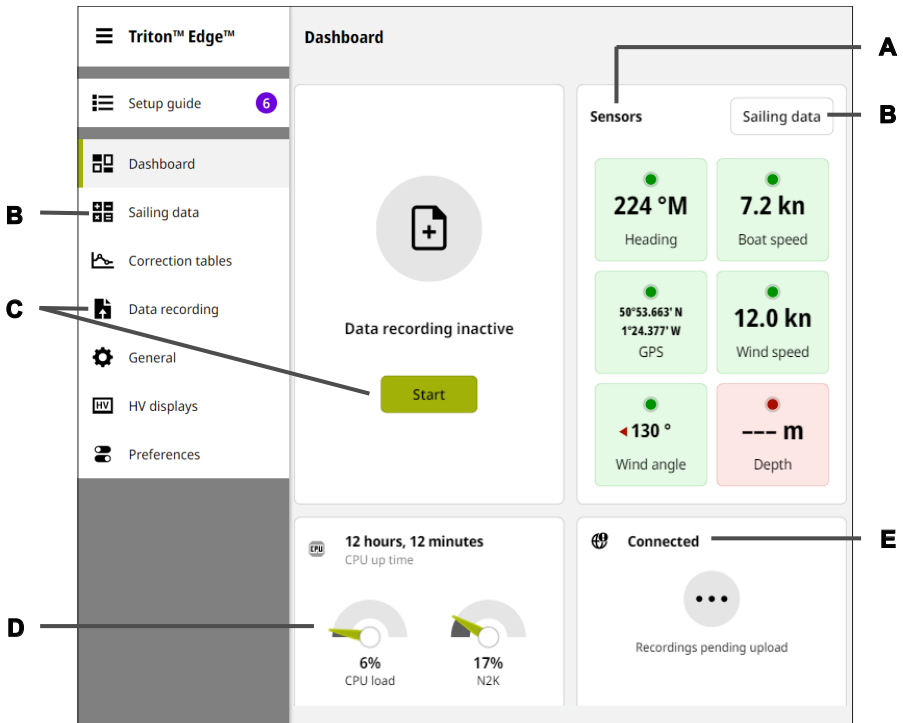
In a sea trial, follow the steps in the calibration wizard to calibrate the measured wind angle offset. To revisit this task later, access it under **Sailing data > Sensors > Wind angle > Operations**.



DASHBOARD

The dashboard provides an overview of key readings without you having to select from a menu.

→ **Note:** A red background indicates that data may not be valid, and you should review the sensor(s) associated with that reading (including check the sensor's physical connections).



- A Sensors**—Gives an overview of core selected sensors.
- B Sailing data**—Gives you access to all the calculated values and associated settings for each piece of data.
- C Data recording**—Allows you to start a data recording. If a recording is in progress, you can add event markers, and end the recording, from here.
- D** Gauges show the loads on the central processing unit (CPU) and NMEA 2000® (N2K) network.
- E** Internet connection status.

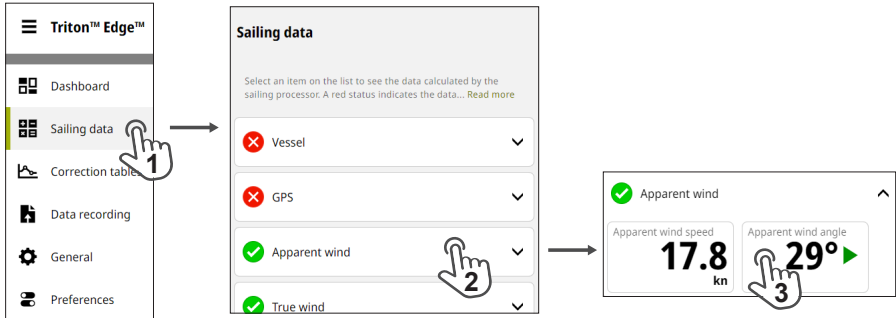


SAILING DATA AND SENSORS

Sailing data

Select a category from the **Sailing data** menu (1), (2), to display the readings related to that category.

Select one of the data values (3) to open the data card associated with that data type.



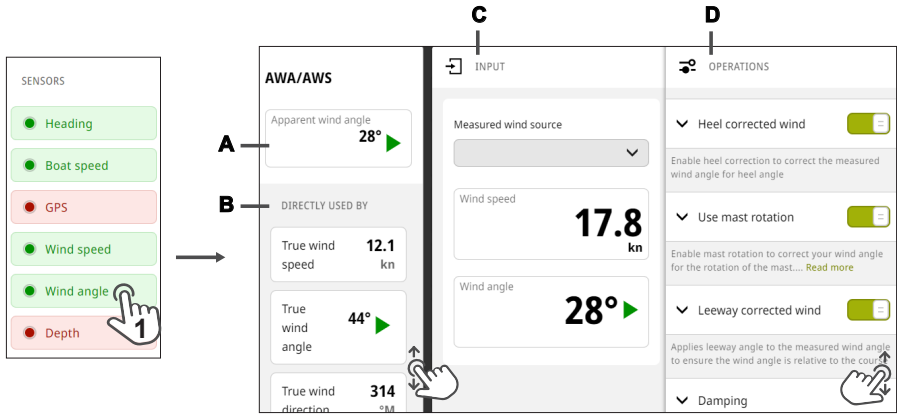
Readings are live, with the update rate determined by the damping value.

→ **Note:** The units for any piece of data can be changed via the **Preferences** menu under the main menu.



Sensors

The **Sensors** menu is on the right of the **Sailing data** screen, and is used to access data cards and settings for your connected sensors.



- A** Live data value—This is derived from the input(s) and operations applied.
- B** **Directly used by**—Lets you know which calculations depend on the live data value.
- C** **Input**—Lets you check or change the source used for the live data value, and view other readings from the same source.
- D** **Operations**—Allows you to apply settings and adjust offsets for that source.
 - *Note: Refer to the inline help text on the web interface for detailed information.*



CORRECTION TABLES

Correction tables allow you to correct boat speed and true wind direction tack to tack by applying offsets at different heel angles or wind speeds.

Open a correction table

Select the **Correction tables** menu (1) to see all three correction tables simultaneously.

Select the enlarge icon (2) at the top right of any correction table to open its graph full screen. This allows you to view the color key for the data; and to access the table for editing.

The screenshot displays the Triton Edge™ application interface. On the left is a navigation menu with the following items: Setup guide, Dashboard, Sailing data, Correction tables (highlighted with a hand icon labeled '1'), Data recording, General, HV displays, and Preferences. The main area is titled 'Correction tables' and contains a descriptive paragraph: 'Correction tables allow you to improve the accuracy of the true wind speed and boat speed data tack to tack. The corrected values for true wind speed and boat speed are then used in the calculation for... Read more'. Below this are three graph panels. The top-left panel is 'True wind angle correction' with a red line graph showing a peak of 6 degrees between 5 and 15 knots. The top-right panel is 'True wind speed correction' with a green line graph showing a positive correction of 1 knot and a red line graph showing a negative correction of -3 knots. The bottom panel is 'Boat speed heel correction'. Hand icons labeled '1' and '2' point to the 'Correction tables' menu item and the enlarge icon of the 'True wind angle correction' graph, respectively.

Triton™ Edge™

Setup guide

Dashboard

Sailing data

Correction tables

Data recording

General

HV displays

Preferences

Correction tables

Correction tables allow you to improve the accuracy of the true wind speed and boat speed data tack to tack. The corrected values for true wind speed and boat speed are then used in the calculation for... [Read more](#)

True wind angle correction

Correction (°)

Wind speed (kn)

Wind speed (kn)	Correction (°)
0	0
5	6
15	6
20	3
30	3

True wind speed correction

Correction (kn)

Wind speed (kn)

Wind speed (kn)	Correction (kn)
0	0
5	1
30	1

Wind speed (kn)	Correction (kn)
0	0
30	-3

Boat speed heel correction



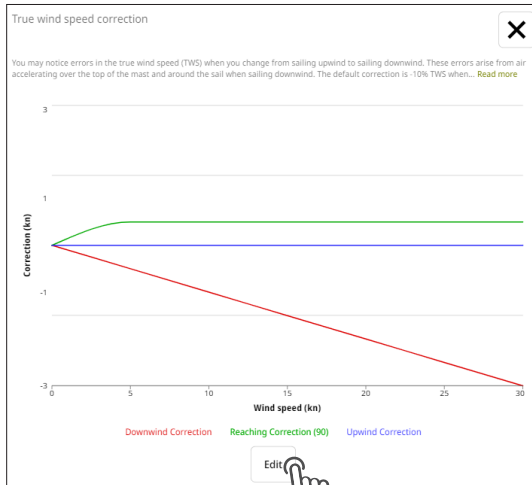
Edit a correction table

Enlarge the correction table to full screen, then select **Edit (1)** to open the table.

Select each cell **(2)**, or tab between them, to enter the applicable correction. Corrections can be negative or positive.

➔ **Note:** Refer to the inline help on the web interface to view the processes for determining correction values.

When you have finished entering values into the table, select **Done (3)** to return to the graph and exit the screen.



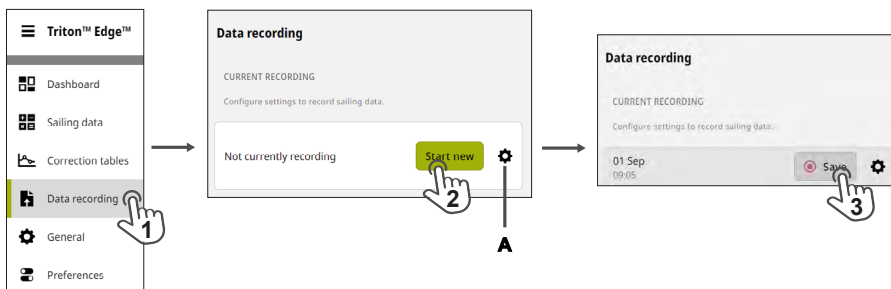
DATA RECORDING

The sailing processor can record, at a sampling rate of once per second, a predefined log of calculated values and sensor readings.

→ **Note:** Your Triton Edge must be registered to your B&G account before any recordings can be uploaded to the cloud for review. See **Register your Triton Edge** on **page 4** for instructions on pairing your sailing processor to your B&G account.

Start a recording manually

Select **Data recording** (1) from the main menu, then select **Start new** (2) to begin recording. Select **Save** (3) to end the recording and save the file to the sailing processor.



Select the settings icon (A) to configure settings such as starting a data recording when the vessel exceeds a certain speed, or to synchronize with the start timer in a race.

→ **Note:** Data recordings continue until you select **Save** to stop the recording and save the file to the sailing processor.

Add events

Select one or more pre-labelled **Add event** markers during the recording to drop a label with a time-stamp into your recorded data.

→ **Note:** You can also start and stop recordings, and place event markers, from the dashboard on the main menu.

Access data recordings

Past recordings are listed on the **Data recording** screen and are identified by their date and start time.

To analyze your recorded sailing data using the companion app, the files first need to be uploaded to your B&G profile in the cloud using an internet connection. The contents of recorded data files cannot be viewed directly on Triton Edge.

→ **Note:** Your Triton Edge must be registered to your B&G account before any recordings can be uploaded to the cloud for review. See **Register your Triton Edge** on **page 4** for instructions on pairing your sailing processor to your B&G account.

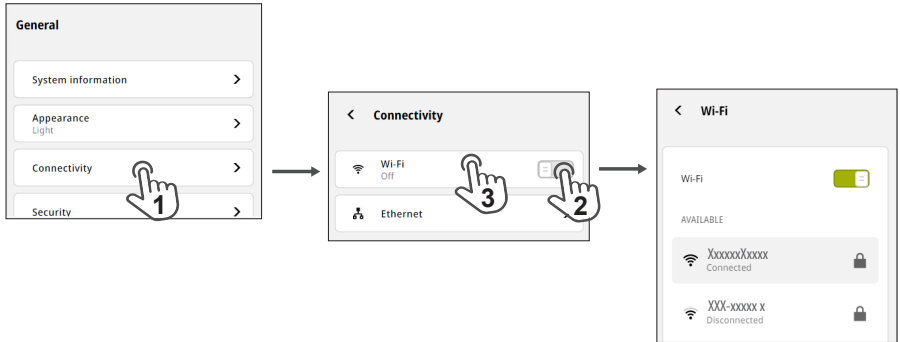


Connect to the internet

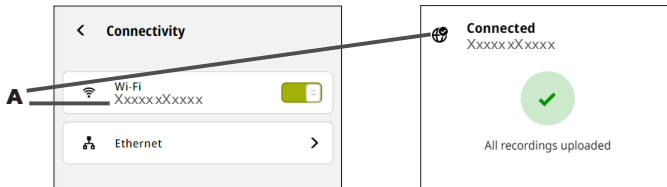
Use the main menu to navigate to **General > Connectivity (1)**.

Move the slider **(2)** to its on state. If a previously-used network is in range, the Triton Edge will automatically connect to it when you switch on Wi-Fi®.

To connect to a new network, open the list of available Wi-Fi® networks **(3)** and select the network you want to join.

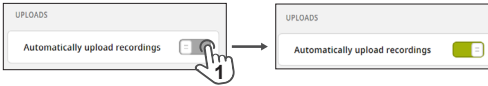


Enter the password when prompted. When the Triton Edge is connected to a Wi-Fi® network, the name of the network (SSID) displays **(A)**. The internet connection status and SSID also show on the dashboard accessed from the main menu.



Upload data recordings

To upload data recordings to your B&G account, navigate to the **Preferences** menu and set the switch **Automatically upload recordings (1)** to On.



If you keep the switch on, recordings will be uploaded automatically whenever an internet connection is available. If you turn the switch off, your data recordings will be stored on the sailing processor and the notification 'Recordings pending upload' (**A**) will be visible on the dashboard.

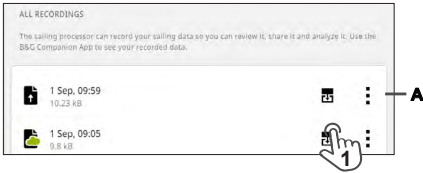


→ **Note:** Your recorded files must be uploaded to your B&G account in the cloud before you can use the companion app to view them.



Export recorded files

With the Triton Edge connected to a mobile device, navigate to the **Data recording** screen. Select the export icon (1) to export that file to the device in .gpx or .csv format.



Delete recorded files

To delete a recording permanently from the sailing processor, select the more icon (A), above, then **Delete**.

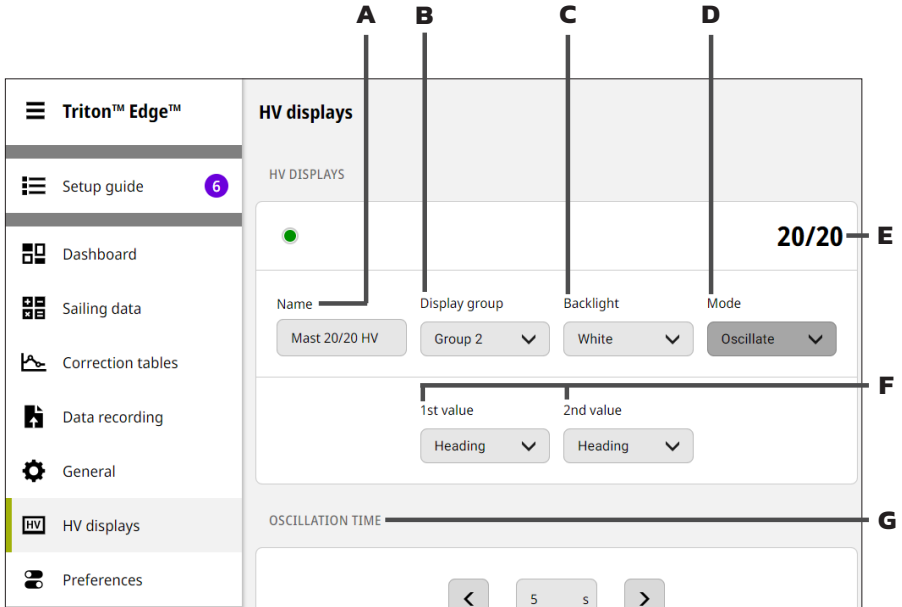
→ **Note:** The option to delete data recordings from the unit automatically to free up space is configured from the settings icon on the **Data recording** menu.



HV DISPLAYS

Any B&G HVision display (HV display) connected to the NMEA 2000® network can be configured using the Triton Edge web interface.

→ *Note: The **HV displays** menu is only visible when one or more HV displays is connected.*



- A Name**—Select in the field to edit the name of a display. If you have several HV displays on the network, renaming them according to their location might help you identify them for easy configuration.
- B Display group**—Assign the display to a display group, to change settings for that group of displays simultaneously.
- C Backlight**—Adjust the backlight on the selected display.
- D Mode**—Set the contexts for the data displayed, for example, display a single data type continuously, or display different data types depending on whether you are sailing upwind or downwind.
- E** Display type—The animated green light on the left shows the display is being configured. At the same time, the corresponding unit on the vessel will flash to help you identify the HV display being adjusted.
- F 1st value, 2nd value**—Select the data type(s) to display from the list(s) in this group.
→ *Note: The options visible here are determined by the **Mode** setting.*
- G Oscillation time**—Sets the duration, in seconds, a data type is displayed before switching to a different data type.
→ *Note: Not all modes allow oscillation.*



SOFTWARE UPDATES

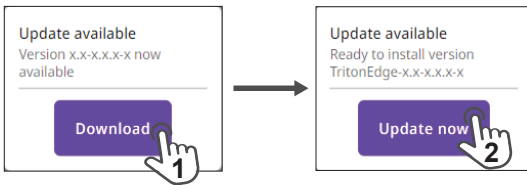
Software upgrades for the Triton Edge are released from time to time and we recommend installing these as they become available.

Install a software update

Your sailing processor will automatically check for software updates when it's connected to the internet.

If an update is available, a notification appears on the web interface's main menu. Select **Download (1)** to download the software package to the Triton Edge.

After the update package has transferred to the Triton Edge, the notification on the main menu changes to show new software is ready to install. Select **Update now (2)** to proceed with installing the update.



As part of the update, the Triton Edge will briefly close its Wi-Fi® hotspot and the web interface will show a message stating the sailing processor is unavailable.

After about 90 seconds, when the Wi-Fi® status LED lights blue (indicating normal operation) select **Try again** to reopen the web interface.

Updating software will not overwrite your details, preferences, correction tables, recorded data files, or calibration settings.



Install an update from a downloaded file

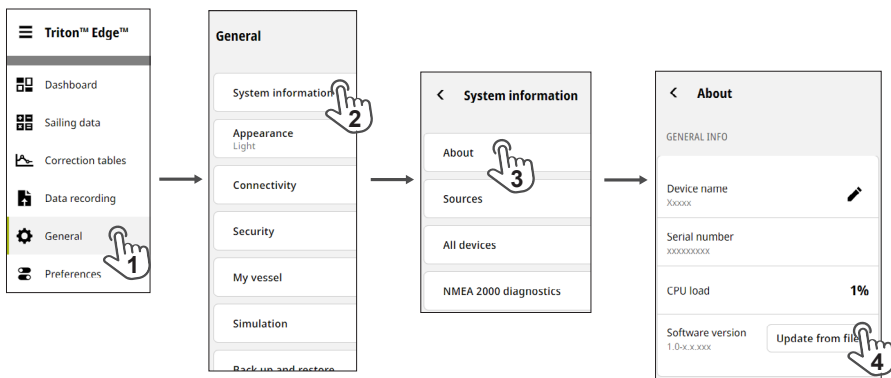
Software updates can also be downloaded from the B&G website to a laptop.

Visit the downloads section on the website, www.bandg.com/downloads, and choose the latest update.

Download the package (a .upd file) to your laptop.

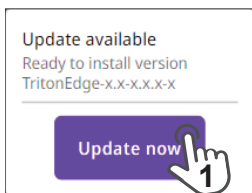
Connect your laptop to the Triton Edge and, using the web interface, navigate to **General > System information > About > Software version**.

Select **Update from file (4)**.



Locate and select the .upd file you downloaded.

After the update package has uploaded to the Triton Edge, the notification on the main menu changes to show new software is ready to install. Select **Update now (1)** to proceed with installing the update.



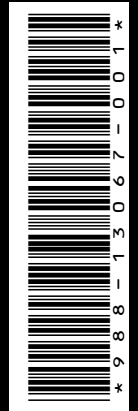
As part of the update, the Triton Edge will briefly close its Wi-Fi® hotspot and the web interface will show a message stating the sailing processor is unavailable.

After about 90 seconds, when the Wi-Fi® status LED lights blue (indicating normal operation) select **Try again** to reopen the web interface.

Updating software will not overwrite your details, preferences, correction tables, recorded data files, or calibration settings.







©Reg. U.S. Pat. & Tm. Off, and ™ common law marks.
Visit www.navico.com/intellectual-property to review
the global trademark rights and accreditations for
Navico Holding AS and other entities.

www.bandg.com