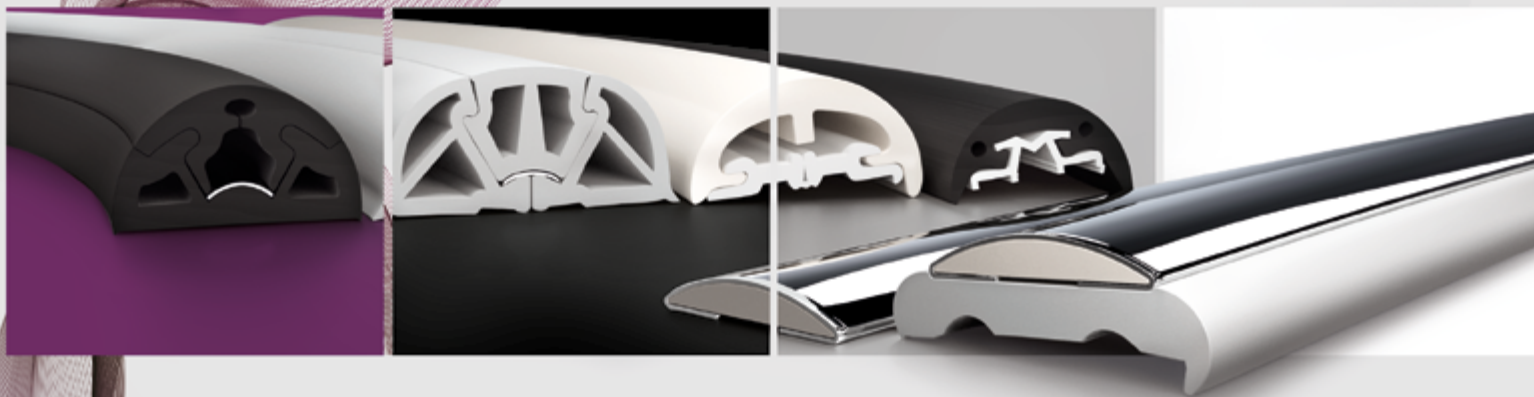


2018



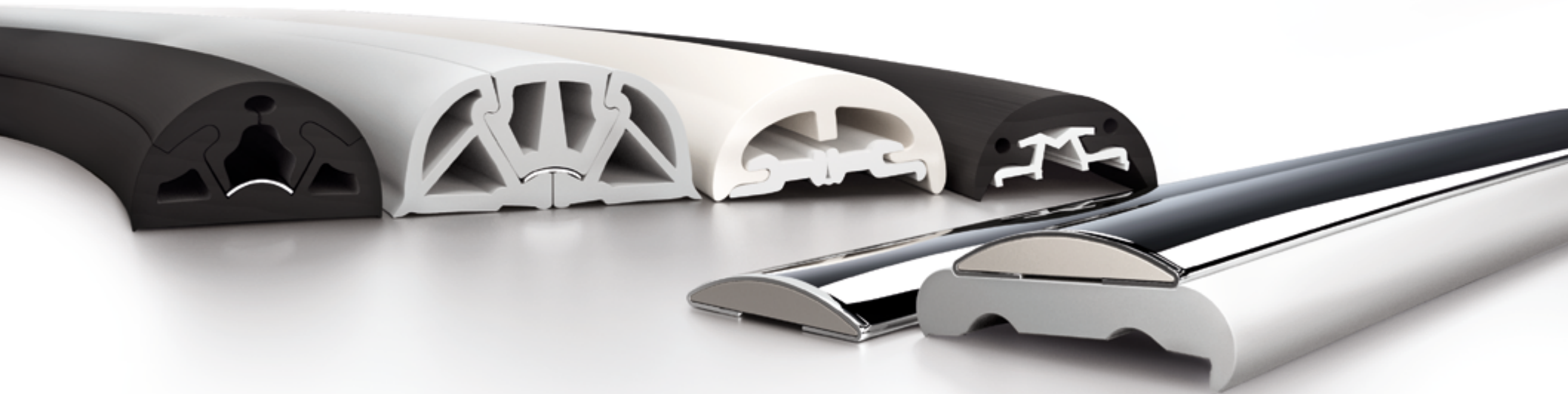
**fender** profiles

**TESSILMARE**<sup>®</sup>





**the n. 1 choice** of boat builders in 140 countries



**bino**

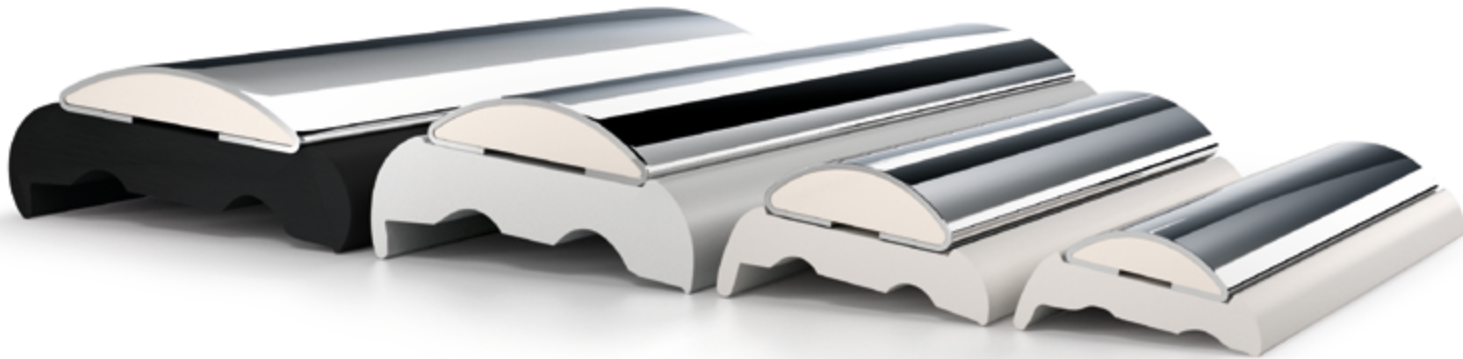
bumper

**RADIAL**

sphæra

# sphæra®

2



engineered by REZZONICO RANIERI  
made by TESSILMARE

## A VERY INNOVATIVE FENDER PROFILE

Sphæra is the first fender profile which combines higher technical performance with better quality and design compared to other traditional systems.

## IL PIÙ INNOVATIVO DEI PROFILI PARABORDO

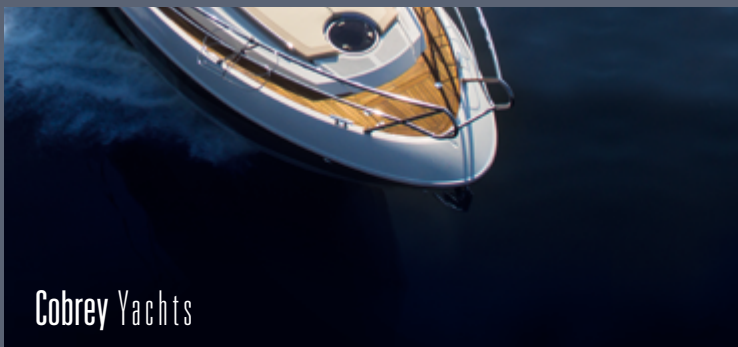
Sphæra è il primo profilo parabordo che associa elevate prestazioni tecniche a finiture di pregio, collocandosi su un piano nettamente superiore rispetto ai tradizionali sistemi in uso.



**ULTRA LIGHT**

**ULTRA STRONG**

**EASILY BENDABLE**



**easily** adaptable to the hull shape

reduce by **70%** your stock  
and expenses



4



**DIRECTLY FITTED**

**WITH A PVC SLIM BASE**

**WITH A PVC STRONG BASE**



# installation options

FITTED DIRECTLY  
Stainless Steel Bar



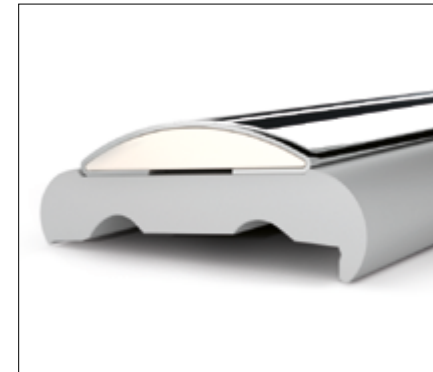
APPLICAZIONE DIRETTA  
Barra in acciaio

FITTED WITH A PVC SLIM BASE  
Stainless Steel Bar + Slim Base



APPLICAZIONE CON BASE SLIM  
Barra in acciaio + Base Slim

FITTED WITH A PVC STRONG BASE  
Stainless Steel Bar + PVC Base



APPLICAZIONE CON BASE  
Barra in acciaio + Base PVC

We have created a specific stainless steel profile with a Duralene® core which guarantees its adaptability to the hull. Its patented process prevents deformation and allows bending on difficult angles with a minimal effort. The pvc base is supplied in reels of the required length. That avoids any aesthetical problems of bar junctions of some traditional systems.

Il riempimento in Duralene® caratterizza l'elevata adattabilità del profilo in acciaio alle geometrie dello scafo, evitando deformazioni delle curve e onerose operazioni di curvatura. La base in pvc fornita in rotoli a misura della imbarcazione risolve i problemi estetici di giunzione delle barre in pvc rigido di alcuni sistemi tradizionali.

# fitting steps



## 6 1 PVC BASE INSTALLATION

The PVC base is placed on the boat with paper tape. The base can be cut of the right boat size to avoid any waste or interruption.

### POSIZIONAMENTO DELLA BASE IN PVC

Posizionamento della base con nastro di carta. La base è prodotta della lunghezza specifica dell'imbarcazione, per non avere scarti di posa o interruzioni.

**HOW TO BEND**

[www.youtube.com/tessilmare](http://www.youtube.com/tessilmare)



## 2 STAINLESS STEEL BAR INSTALLATION

Steel bars are pre-drilled and are secured together with the base with steel screws. Bow and stern bends are created directly on the boat, that works as bending template.

We recommend the use of a wood template only in presence of very sharp and difficult boat side bends.

### POSA DEL PROFILO IN ACCIAIO

Le barre di acciaio preforate consentono di avvitare allo scafo, in un unico passaggio, entrambi i profili.

Le curve di prua e di poppa si eseguono direttamente sulla barca, utilizzando la stessa come dima.

Per raggiature acute, curve ai lati dell'imbarcazione o curve particolarmente difficili, si consiglia l'utilizzo di una semplice dima in legno.



## 3 JOINT AND END CAPS INSTALLATION

Our well-designed and functional joint caps perfectly cover the gaps at junctures and keep the bars perfectly aligned to avoid any aesthetical problem of double screws.

Stainless steel end caps give an elegant finishing touch.

### POSA DEI COPRIGIUNTA E TERMINALI

I pratici ed eleganti coprigiunta risolvono l'allineamento delle barre ed evitano problemi estetici derivanti dalle doppie viti. L'applicazione del profilo è completata con il montaggio degli eleganti terminali in acciaio.







## ADVANTAGES

- 316 L stainless steel
- Exceptionally strong
- Lightweight
- Easy to bend and install
- Crashproof
- Competitive price
- Reduced waste
- Precious aesthetical look
- Easy to repair and refit

## VANTAGGI

- Acciaio inox 316 L
- Altissima resistenza agli urti
- Leggero
- Facile da piegare e installare
- Non si deforma
- Prezzo altamente competitivo
- Nessuno spreco di materiale
- Estetica di pregio
- Facile da riparare o sostituire

## joint & end cap

The joint caps keep the bars perfectly aligned, thereby avoiding multiple and unnecessary drillings without altering the pitch.

Il coprigiunta mantiene saldamente allineate le barre evitandone la foratura delle estremità e lasciando allo stesso tempo inalterata la sequenza delle viti.



# base pvc

COLORS	item # -B	item # -G	item # -W
	BLACK	GREY	WHITE



ITEM	DESCRIPTION	WEIGHT	MIN BENDING RAD	PACKAGING	PACKAGING
ARTICOLO	DESCRIZIONE	PESO	R MIN CURVATURA	IMBALLO	CONFEZIONI DA
130-130-040	base PVC - Sphæra 25	11 oz/yd	1-1/8"	coil	39'
130-130-040	base PVC - Sphæra 25	356 g/m	30 mm	rotolo	12 m
130-130-050	base PVC - Sphæra 35	21 oz/yd	2-7/8"	coil	39'
130-130-050	base PVC - Sphæra 35	646 g/m	75 mm	rotolo	12 m
130-130-070	base PVC - Sphæra 50	45 oz/yd	3-7/8"	coil	39'
130-130-070	base PVC - Sphæra 50	1.400 g/m	100 mm	rotolo	12 m
130-130-090	base PVC - Sphæra 65	52 oz/yd	3-7/8"	coil	39'
130-130-090	base PVC - Sphæra 65	1.635 g/m	100 mm	rotolo	12

ITEM	DESCRIPTION	WEIGHT	PACKAGING	PACKAGING
ARTICOLO	DESCRIZIONE	PESO	IMBALLO	CONFEZIONI DA
130-130-039	base SLIM - Sphæra 25	4 oz/yd	coil	39'
130-130-039	base SLIM - Sphæra 25	130 g/m	rotolo	12 m
130-130-049	base SLIM - Sphæra 35	5 oz/yd	coil	39'
130-130-049	base SLIM - Sphæra 35	160 g/m	rotolo	12 m
130-130-069	base SLIM - Sphæra 50	6 oz/yd	coil	39'
130-130-069	base SLIM - Sphæra 50	210 g/m	rotolo	12 m
130-130-089	base SLIM - Sphæra 65	8 oz/yd	coil	39'
130-130-089	base SLIM - Sphæra 65	250 g/m	rotolo	12 m

8



# bars stainless steel + pvc

COLORS	S/S



ITEM	DESCRIPTION	ONCE x YARD	PACKAGING	PACKAGING
ARTICOLO	DESCRIZIONE	GRAMMI x M	IMBALLO	CONFEZIONI DA
130-130-125	Sphæra 25	15 oz/yd	tube	12 in bars of 9'
130-130-125	Sphæra 25	470 g/m	tubo	12 in barre da 3 m
130-130-135	Sphæra 35	26 oz/yd	tube	12 in bars of 9'
130-130-135	Sphæra 35	830 g/m	tubo	12 in barre da 3 m
130-130-150	Sphæra 50	38 oz/yd	tube	12 in bars of 9'
130-130-150	Sphæra 50	1.200 g/m	tubo	12 in barre da 3 m
130-130-165	Sphæra 65	49 oz/yd	tube	12 in bars of 9'
130-130-165	Sphæra 65	1.535 g/m	tubo	12 in barre da 3 m

# accessories stainless steel

COLORS  
S/S



ITEM	DESCRIPTION	
ARTICOLO	DESCRIZIONE	
130-500-125	S/S Top cap - Sphæra 25	1 piece each bar necessary
130-500-125	Coprigiunta inox - Sphæra 25	1 pezzo per barra
130-500-135	S/S Top cap - Sphæra 35	1 piece each bar necessary
130-500-135	Coprigiunta inox - Sphæra 35	1 pezzo per barra
130-500-150	S/S Top cap - Sphæra 50	1 piece each bar necessary
130-500-150	Coprigiunta inox - Sphæra 50	1 pezzo per barra
130-500-165	S/S Top cap - Sphæra 65	1 piece each bar necessary
130-500-165	Coprigiunta inox - Sphæra 65	1 pezzo per barra



ITEM	DESCRIPTION	
ARTICOLO	DESCRIZIONE	
130-500-625	S/S End cap - Sphæra 25	mounted without PVC base
130-500-625	Terminale inox - Sphæra 25	montato senza basi PVC
130-500-635	S/S End cap - Sphæra 35	mounted without PVC base
130-500-635	Terminale inox - Sphæra 35	montato senza basi PVC
130-500-650	S/S End cap - Sphæra 50	mounted without PVC base
130-500-650	Terminale inox - Sphæra 50	montato senza basi PVC



ITEM	DESCRIPTION	
ARTICOLO	DESCRIZIONE	
130-500-725	S/S End cap KIT - Sphæra 25	mounted with PVC base
130-500-725	KIT Terminall inox - Sphæra 25	montato con base PVC
130-500-735	S/S End cap KIT - Sphæra 35	mounted with PVC base
130-500-735	KIT Terminall inox - Sphæra 35	montato con base PVC
130-500-750	S/S End cap KIT - Sphæra 50	mounted with PVC base
130-500-750	KIT Terminall inox - Sphæra 50	montato con base PVC
130-500-765	S/S End cap KIT - Sphæra 65	mounted with PVC base
130-500-765	KIT Terminall inox - Sphæra 65	montato con base PVC

# RADIAL®

10



engineered by REZZONICO MASSIMO  
made by TESSILMARE

## TIME AND LABOR SAVINGS

Fast and easy to install, Radial is the PVC fender profile without rivals. It's different from all other profiles on the market and can be cold fitted in just a few steps. The soft seamless insert is supplied in custom-cut reels to avoid waste.

## RISPARMIO SU TUTTI I FRONTI

Radial è il profilo parabordo in pvc senza rivali. A differenza di tutti i profili presenti sul mercato Radial è applicabile a freddo in pochi e veloci passaggi. Fornito in rotoli tagliati su misura per evitare spreco di materiale e interruzioni estetiche.



**EXTREMELY** FLEXIBLE

**GOLD** FITTING



**SEAMLESS**



Wider Yachts



Quicksilver Boats

**perfect** hull adhesion

# fitting steps

HOW TO BEND

[www.youtube.com/tessilmare](http://www.youtube.com/tessilmare)



## 1 RIGID TRACK INSTALLATION

Cold screwing or riveting the rigid track with no special tool. The track bends perfectly in all boat directions so installation is quick and easy.

### APPLICAZIONE DEL BINARIO

Avvitatura o rivettatura a freddo del binario rigido, senza l'ausilio di attrezzature. Il binario segue perfettamente i tre assi dell'imbarcazione consentendo un'applicazione facile e veloce.



Track hand bending, no need to heat up the profile.

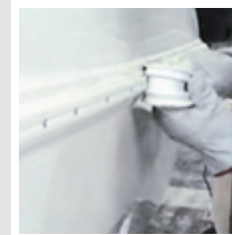
Piegatura a mano del binario, senza necessità di riscaldare.

## 2 SOFT PROFILE INSTALLATION

The soft pvc profile is installed cold, no need for any special tool or pre-heating. The track bends perfectly in any direction all around the boat with no waste or unsightly joints.

### APPLICAZIONE DEL PROFILO

Applicazione del profilo in pvc eseguita a freddo, senza necessità di attrezzature od operazioni di pre-riscaldamento. L'alta adattabilità alle curve dello scafo permette di applicare il profilo in pvc lungo tutto il perimetro dell'imbarcazione, senza scarti di lavorazione o antiestetiche giunzioni.



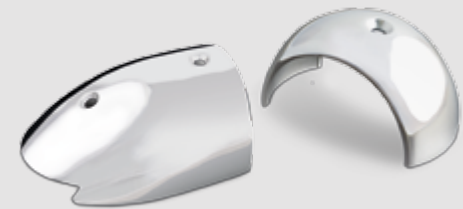
## 3 END CAP INSTALLATION

Profile cutting and installation of pvc or stainless steel End and Top Caps.

### APPLICAZIONE DEL TERMINALE

Taglio del profilo.

Completamento del montaggio con gli accessori di finitura, terminali e coprigiunta, disponibili in pvc o nella versione in acciaio.





Delphia Yachts

## joint & end cap

Two types of matching joints and end caps: convenient PVC or elegant Stainless Steel giving a finishing touch.

Pratici ed eleganti coprigiunta e terminali sia in PVC che in acciaio completano la finitura dello specchio di poppa e del giro barca.



### ADVANTAGES

- Seamless installation
- Custom cut
- Easy to repair or refit
- Quick setup
- No pre-heating necessary
- 70% faster to assemble

### VANTAGGI

- Nessuna interruzione
- Fornito su misura
- Facile da riparare o sostituire
- Veloce da installare
- Si applica a freddo
- Economico



Compmillenia

Compmillenia 6.7

# soft profile pvc



14

ITEM	DESCRIPTION	WEIGHT	MIN BENDING RAD	PACKAGING	PACKAGING
ARTICOLO	DESCRIZIONE	PESO	R MIN CURVATURA	IMBALLO	CONFEZIONI DA
130-141-006	track Radial 30	5 oz/yd	2"	bundle	78'
130-141-006	canalina Radial 30	181 g/m	50 mm	fasci	24 m
130-141-007	soft profile Radial 30	11 oz/yd		coil	78'
130-141-007	inserto Radial 30	360 g/m		rotolo	24 m
130-141-011	track Radial 40	10 oz/yd	2-3/8"	bundle	78'
130-141-011	canalina Radial 40	310 g/m	60 mm	fasci	24 m
130-141-012	soft profile Radial 40	17 oz/yd		coil	78'
130-141-012	inserto Radial 40	545 g/m		rotolo	24 m
130-141-016	track Radial 52	14 oz/yd	2-3/4"	bundle	78'
130-141-016	canalina Radial 52	432 g/m	70 mm	fasci	24 m
130-141-017	soft profile Radial 52	36 oz/yd		coil	78'
130-141-017	inserto Radial 52	1.120 g/m		rotolo	24 m
130-141-021	track Radial 65	14 oz/yd	3-1/8"	bundle	78'
130-141-021	canalina Radial 65	432 g/m	80 mm	fasci	24 m
130-141-022	soft profile Radial 65	38 oz/yd		coil	78'
130-141-022	inserto Radial 65	1.180 g/m		rotolo	24 m
130-141-026	track Radial 80	17 oz/yd	3-7/8"	bundle	78'
130-141-026	canalina Radial 80	530 g/m	100 mm	fasci	24 m
130-141-027	soft profile Radial 80	61 oz/yd		coil	78'
130-141-027	inserto Radial 80	1.915 g/m		rotolo	24 m
130-141-031	track Radial 100	38 oz/yd	6-1/4"	bundle	78'
130-141-031	canalina Radial 100	1.200 g/m	160 mm	fasci	24 m
130-141-032	soft profile Radial 100	92 oz/yd		coil	78'
130-141-032	inserto Radial 100	2.880 g/m		rotolo	24 m





# accessories stainless steel

COLORS	S/S	item # -B <b>BLACK</b>	item # -G GREY	item # -W WHITE
--------	-----	---------------------------	-------------------	--------------------



ITEM ARTICOLO	DESCRIPTION DESCRIZIONE
130-500-500	S/S End cap - Radial 30
130-500-500	Terminale in acciaio - Radial 30
130-500-510	S/S End cap - Radial 40
130-500-510	Terminale in acciaio - Radial 40
130-500-520	S/S End cap - Radial 52
130-500-520	Terminale in acciaio - Radial 52
130-500-530	S/S End cap - Radial 65
130-500-530	Terminale in acciaio - Radial 65
130-500-580	S/S End cap Kit - Radial 80
130-500-580	Kit Terminale in acciaio - Radial 80



ITEM ARTICOLO	DESCRIPTION DESCRIZIONE
130-500-610	S/S Top cap - Radial 40
130-500-610	Coprigiunta in acciaio - Radial 40
130-500-620	S/S Top cap - Radial 52
130-500-620	Coprigiunta in acciaio - Radial 52
130-500-630	S/S Top cap - Radial 65
130-500-630	Coprigiunta in acciaio - Radial 65
130-500-640	S/S Top cap - Radial 80
130-500-640	Coprigiunta in acciaio - Radial 80

# accessories pvc



**NEW 2018**



ITEM ARTICOLO	DESCRIPTION DESCRIZIONE
130-500-010	PVC End cap - Radial 30
130-500-010	Terminale in PVC - Radial 30
130-500-050	PVC End cap - Radial 40
130-500-050	Terminale in PVC - Radial 40
130-500-030	PVC End cap - Radial 52
130-500-030	Terminale in PVC - Radial 52
130-500-030	PVC End cap - Radial 65
130-500-030	Terminale in PVC - Radial 65
130-500-091	PVC End cap - Radial 100
130-500-091	Terminale in PVC - Radial 100



ITEM ARTICOLO	DESCRIPTION DESCRIZIONE
130-500-310	PVC Top cap - Radial 30
130-500-310	Coprigiunta in PVC - Radial 30
130-500-310	PVC Top cap - Radial 40
130-500-310	Coprigiunta in PVC - Radial 40
130-500-330	PVC Top cap - Radial 52
130-500-330	Coprigiunta in PVC - Radial 52
130-500-330	PVC Top cap - Radial 65
130-500-330	Coprigiunta in PVC - Radial 65

# bino



16

## STRONG AND LIGHTWEIGHT

Bino is Tessilmare's latest born Profile. It can be easily bent due to our patented two piece design. Which also allows to cover unaesthetic screws.

Custom Cut.

Very flexible, can be used in docks, piers, military boats, work boats and pleasure boats.

## IL FORTE MA LEGGERO

Bino è l'ultimo profilo nato di casa Tessilmare.

Grazie alla sua possente struttura offre un'alta protezione agli urti e si rende adatto alla protezione di banchine e imbarcazioni da lavoro, militari e in genere.



engineered by REZZONICO MASSIMO  
made by TESSILMARE

**TESSILMARE**



**suitable** for:

- YACHTS
- MILITARY BOATS
- TENDERS
- DOCK PROTECTION
- WORKBOATS
- PIER PROTECTION

**STRONG**



**LIGHT**

FB Design



The peculiarity of this product is that it can be adapted to very complex curves, with both negative and positive acute radius, the product does not need any pre-heating so the assembly is fast.

The modularity of Bino 40 allows you to replace one of the two parts over time, indistinctly.

La particolarità di questo prodotto è quella di potersi adattare a curve molto complesse, con raggi acuti sia negativi che positivi, il prodotto non necessita riscaldamento pertanto la fase di montaggio è velocissima.

La modularità di Bino 40 consente di poter sostituire nel tempo una delle due parti, indistintamente.

# bino40



## fitting steps

### 1 PREPARATION OF THE PROFILE

The Bino 40 profile consists of 2 modules, one base and one "top" which covers the fixing screws.

The product fits cold as its flexibility is very high.

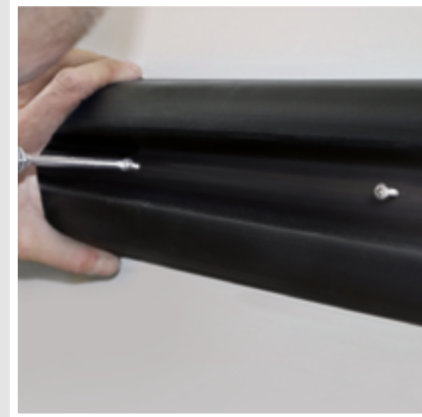
Lay the profile on the ground around the boat or on the boat itself, the more the profile is properly outstretched, the easier it is to install it.

#### PREPARAZIONE DEL PROFILO

Il profilo Bino 40 è costituito da 2 moduli, uno di base ed uno a "tappo" che copre le viti di fissaggio.

Il prodotto si monta a freddo poiché la sua flessibilità è molto elevata.

Distendere il profilo a terra intorno all'imbarcazione o sull'imbarcazione stessa, più il profilo sarà disteso in modo corretto più semplice sarà la sua installazione.

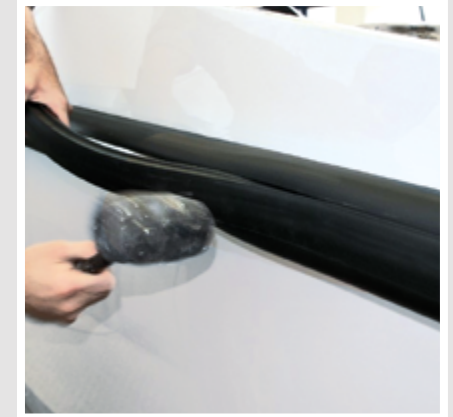


### 2 FIXING THE BASE PROFILE THROUGH SCREWS AND RIVETS

Drill holes in the boat using the same holes of the bars as a guide.

#### FISSARE IL PROFILO DI BASE TRAMITE VITI O RIVETTI

Forare ed avvitare il profilo di base direttamente all'imbarcazione.



### 3 APPLICATION OF THE TOP PROFILE

Install the top profile by pressing it with a rubber hammer.

#### APPLICAZIONE DEL PROFILO TOP

Applicare il profilo di chiusura pressandolo con un martello di gomma.



### 4 FINISH WITH THE END-CAPS

RIFINIRE CON TERMINALI DI CHIUSURA

# fitting steps

## HOW TO BEND

[www.youtube.com/tessilmare](http://www.youtube.com/tessilmare)

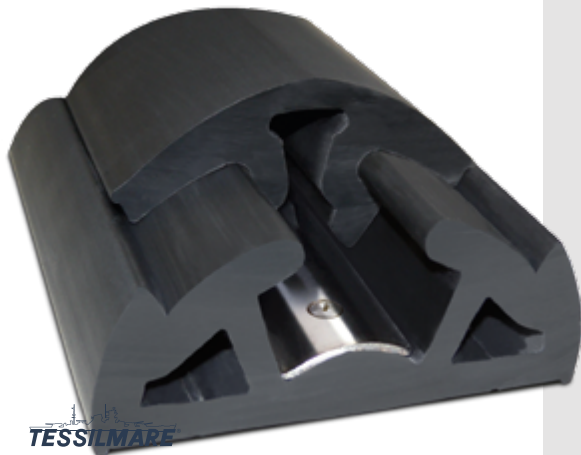
Bino is supplied in custom-cut reels, to avoid junctions. A pre-drilled steel bar allows easy installation of the profile base.

The top side is simply pressure fixed.

Bino è fornito in rotoli a misura dell'imbarcazione per evitare giunzioni e punti di debolezza.

Si applica facilmente: il profilo di base è fissato con l'ausilio di una barra preforata in acciaio, il profilo di colmo è posizionabile a pressione.

# bino65&90



## 1 PREPARATION OF THE PROFILE

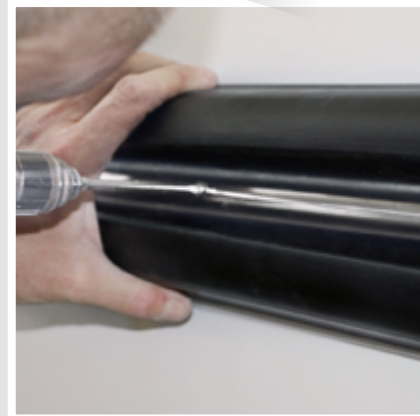
The fender profiles **Bino 90** and **Bino 65** consist of 2 modules and a fixing pre-drilled bar in stainless steel.

Lay the profile on the ground around the boat or on the boat itself, more the profile will be lied down correctly, the easier it is its installation.

## PREPARAZIONE DEL PROFILO

I profili **Bino 90** e **Bino 65** sono costituiti da 2 moduli e una barra pre-forata di fissaggio in acciaio inox.

Distendere il profilo a terra intorno all'imbarcazione o sull'imbarcazione stessa, più il profilo sarà disteso in modo corretto più semplice sarà la sua installazione.



## 2 FIXING THE TRACK THROUGH THE STEEL BAR

Drill holes in the boat using the same holes of the bars as a guide.

## FISSARE IL PROFILO DI BASE TRAMITE LA SUA BARRA IN ACCIAIO

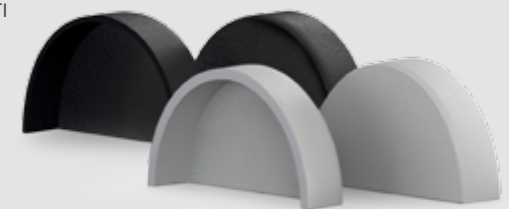
Forare l'imbarcazione utilizzando i fori del binario stesso come guida.

## 3 APPLICATION OF THE TOP PROFILE 19

Apply the closing profile by pressing with a rubber hammer.

## APPLICAZIONE DEL PROFILO TOP

Applicare il profilo di chiusura pressandolo con un martello di gomma.



## 4 FINISH WITH THE END-CAPS RIFINIRE CON TERMINALI DI CHIUSURA

# profile pvc



NEW 2018



ITEM ARTICOLO	DESCRIPTION DESCRIZIONE	WEIGHT PESO	PACKAGING IMBALLO	MIN. ORDER ORDINE MINIMO
130-115-010	Bino H 90 series 2 pieces	122 oz/yd	coil	39'
130-115-010	Bino H 90 serie 2 pezzi	3.800 g/m	rotolo	12 m
130-115-005	Bino H 65 series 2 pieces	73 oz/yd	coil	39'
130-115-005	Bino H 65 serie 2 pezzi	2.290 g/m	rotolo	12 m
130-110-165	S/S Bar 2 mts. long			
130-110-165	Barra in acciaio da 2 m			
130-115-001	Bino H 40 series 2 pieces	27 oz/yd	coil	78'
130-115-001	Bino H 40 serie 2 pezzi	850 g/m	rotolo	24 m

COLORS

item # -B  
BLACK

item # -G  
GREY

item # -W  
WHITE

# accessories pvc & stainless steel

20



ITEM ARTICOLO	DESCRIPTION DESCRIZIONE
130-500-095	PVC End cap - BINO 90
130-500-095	Terminale in PVC - Bino 90
130-500-092	PVC End cap - BINO 65
130-500-092	Terminale in PVC - Bino 65



COLORS

S/S

item # -B  
BLACK

item # -G  
GREY

item # -W  
WHITE

ITEM ARTICOLO	DESCRIPTION DESCRIZIONE
130-500-510	S/S End cap - Bino 40
130-500-510	Terminale in acciaio - Bino 40
130-500-610	S/S Top cap - Bino 40
130-500-610	Coprigiunta in acciaio - Bino 40

## bino90 bino65



## bino40



# bumper



21

## STRONG BUT LIGHTWEIGHT

Bumper is the first fender profile that represents the perfect alliance between lightweight and power. Developed with a triple structure of PVC, it has wide inner air gaps creation absorption of impacts never been reached before.

## FORZA E LEGGEREZZA

Bumper è il potente profilo parabordo che si distingue per l'assoluta leggerezza. Concepito con una triplice struttura in pvc con ampie camere d'aria interne, Bumper raggiunge una capacità di assorbimento agli urti senza precedenti.

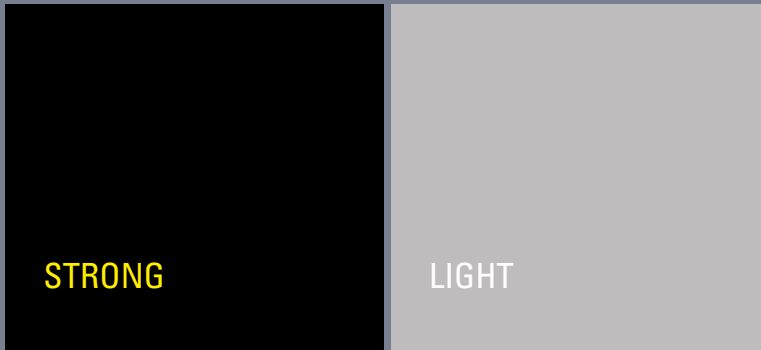


engineered by REZZONICO MASSIMO  
made by TESSILMARE



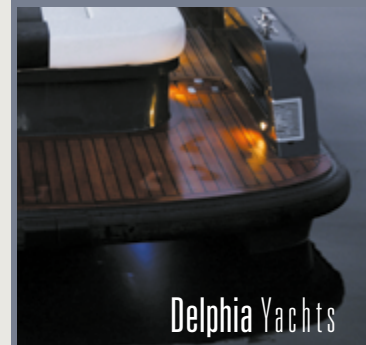
It can be easily installed, thanks to its own modularity: both base profiles are fixed to the hull through a stainless steel bar, while the top profile can be fitted by pressure.

Può essere applicato facilmente grazie alla sua componibilità: i due profili di base sono fissati allo scafo con l'ausilio di una barra in acciaio, il profilo di colmo è posizionabile a pressione.



**suitable** for:

- YACHTS
- MILITARY BOATS
- TENDERS
- DOCK PROTECTION
- WORKBOATS
- PIER PROTECTION





## HOW TO BEND

[www.youtube.com/tessilmare](http://www.youtube.com/tessilmare)

# fitting steps

## 1 PREPARATION OF THE PROFILE

The fender profiles Bumper consist of 3 modules and a fixing pre-drilled bar in stainless steel. Lay the profile on the ground around the boat or on the boat itself, more the profile will be lied down correctly, the easier it is its installation.

### PREPARAZIONE DEL PROFILO

I profili Bumper sono costituiti da 3 moduli e una barra pre-forata di fissaggio in acciaio inox.

Distendere il profilo a terra intorno all'imbarcazione o sull'imbarcazione stessa, più il profilo sarà disteso in modo corretto più semplice sarà la sua



## 2 FIXING THE STEEL TRACK

Place the fender profile and the fixing bar marking the right position of the steel bar with a felt-tip pen.

Drill holes in the boat using the same holes of the bars as a guide, point the track screws over the entire circumference boat.

### FISSARE IL BINARIO IN ACCIAIO

Posizionare il profilo e la barra di fissaggio segnando la posizione corretta della parte metallica con un pennarello.

Forare l'imbarcazione utilizzando i fori del binario stesso come guida, puntare le viti del binario su tutta la circonferenza dell'imbarcazione.



## 3 APPLICATION OF THE BASE MODULES

Apply one of the two base modules, screwing the screws till when the profile stays on place.

Apply the second base module, then tighten the screws until completely secure the base parts. The modules have to be placed perfectly under the steel track.

### APPLICAZIONE DEI MODULI DI BASE

Applicare uno dei due moduli di base, avvitando le viti fino a quando il profilo rimane posizionato.

Applicare il secondo modulo di base e successivamente avvitare le viti fino a completo fissaggio dei moduli. I moduli dovranno essere inseriti perfettamente sotto il binario.

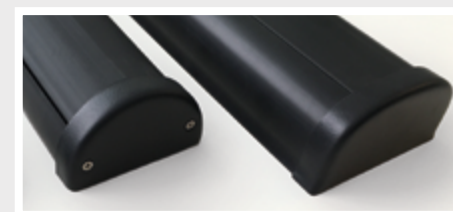


## 4 APPLICATION OF THE TOP PROFILE

Apply the closing profile by pressing with a rubber hammer.

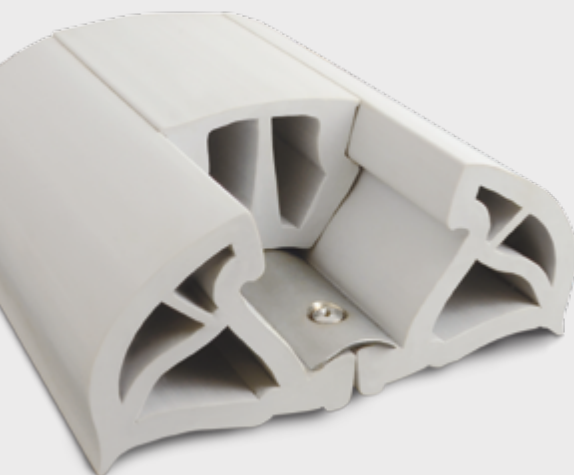
### APPLICAZIONE DEL PROFILO TOP

Applicare il Profilo di chiusura pressandolo con un martello di gomma.



## 5 FINISH WITH THE STERN ENDING CAPS OR THE TOPS CAPS

RIFINIRE CON TERMINALI DI POPPA O COPRIGIUNTA



# profile pvc



COLORS	item # -B	item # -G	item # -W
	BLACK	GREY	WHITE

ITEM	DESCRIPTION	WEIGHT	PACKAGING	MIN. ORDER
ARTICOLO	DESCRIZIONE	PESO	IMBALLO	ORDINE MINIMO
130-110-100	Bumper H 100 series 3 pieces	122 oz/yd	coil	39'
130-110-100	Bumper H 100 serie 3 pezzi	3.800 g/m	rotolo	12 m
130-110-125	Bumper H 125 series 3 pieces	185 oz/yd	coil	39'
130-110-125	Bumper H 125 serie 3 pezzi	5.780 g/m	rotolo	12 m
130-110-150	Bumper H 150 series 3 pieces	230 oz/yd	coil	39'
130-110-150	Bumper H 150 serie 3 pezzi	7.200 g/m	rotolo	12 m
130-110-160	Bumper H 160 series 3 pieces	272 oz/yd	coil	39'
130-110-160	Bumper H 160 serie 3 pezzi	8.500 g/m	rotolo	12 m
130-110-170	S/S Bar 2 mts. long			
130-110-170	Barra in acciaio da 2 m			

# accessories pvc

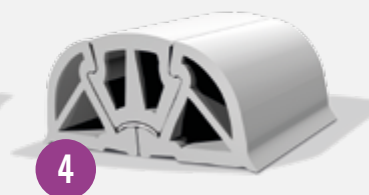
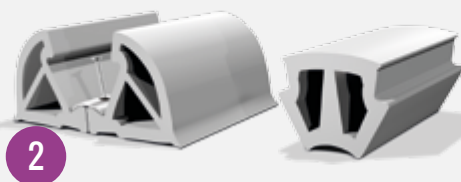
24



COLORS	item # -B	item # -G	item # -W
	BLACK	GREY	WHITE

ITEM	DESCRIPTION
ARTICOLO	DESCRIZIONE
130-500-096	PVC End cap - Bumper 100
130-500-096	Terminale in PVC - Bumper 100
130-500-097	PVC End cap - Bumper 125
130-500-097	Terminale in PVC - Bumper 125
130-500-098	PVC End cap - Bumper 150
130-500-098	Terminale in PVC - Bumper 150
130-500-099	PVC End cap - Bumper 160
130-500-099	Terminale in PVC - Bumper 160

# bumper





SHOCK  
ABSORBING  
SYSTEMS  
IN GENERAL

dock fenders



# dock fenders



DOCK 60

DOCK 90



DOCK 72

26

Shock absorbing systems produced in pvc with a **very low friction coefficient**.  
The boat slides without any abrasion phenomena and without producing any noise. The pvc does not mark as instead the rubber does. It can be set individually or in multiples.

Profili paracolpi realizzati con materiale a **bassissimo coefficiente d'attrito**.  
Il fianco della barca scivola senza abrasione e rumore. A differenza della gomma, il pvc non marca il gel-coat dell'imbarcazione. Si applica singolarmente o in multipli.

Non marking  
Good impact resistance  
High resistance to abrasion  
Easy to install

Non sporca il gel-coat  
Ottima resistenza all'impatto  
Alta resistenza all'abrasione  
Semplice installazione



Fixing: insert an aluminium or an industrial zinc-plated plate 30x5 mm, drill through the fixing screws.

Montaggio: inserire un piatto di alluminio o ferro zincato, industriale 30x5 mm e forare il tutto per l'introduzione delle viti di fissaggio.

# profiles for trailers



Protection profiles for boat launching cradles, trailers and protection systems in general, produced in PVC with a **high friction coefficient**.

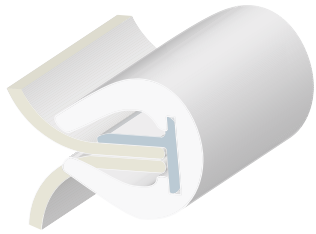
Profili per invasature di imbarcazioni, selle di carrelli rimorchio, protezioni in genere, realizzato con materiale **ad altissimo coefficiente d'attrito**.

Alta resistenza all'abrasione
Alta resistenza al taglio
Ottima resistenza all'impatto
Semplice installazione
Disponibile in vari colori
Non sporca il Gel-Coat
Prodotto in rotolo in misure a richiesta
Montaggio a freddo
La barca e' incollata all'invasatura o al carrello

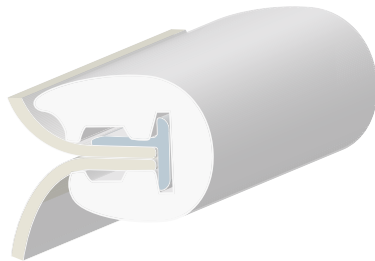
High resistance to abrasion
High resistance to cutting
Good impact resistance
Easy to install
Available in several colours
Non marking
Custom-cut reels
To be fitted cold
The boat is firmly positioned on the trailer



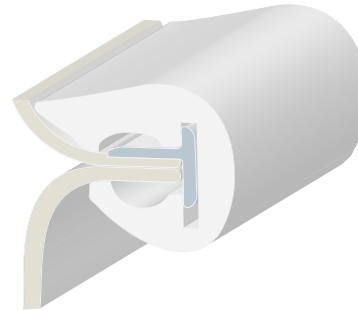
# L series



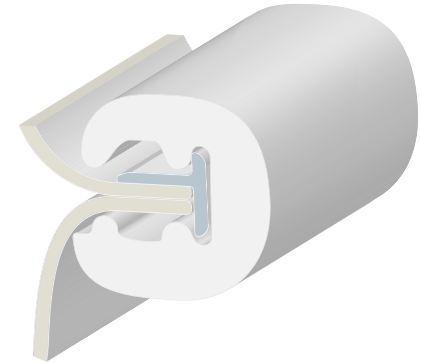
L 32 T 16



L 35 T 18



L 45 T 22



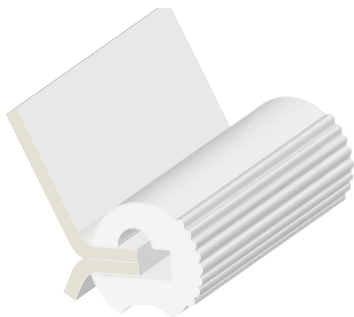
L 50 T 22

## WITH "T" RIGID SUPPORT

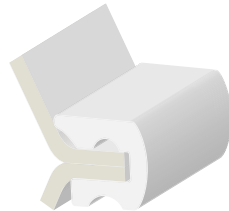
To be fitted with "T" rigid support. Soft pvc to be fitted warm, T16/T18/T22 cold.

## CON SUPPORTO A "T"

Montaggio con supporto a "T". Il profilo in pvc si monta tiepido, T16/T18/T22 a freddo.



L 28



L 30

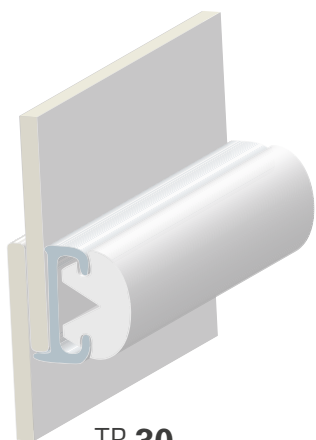
## WITHOUT "T" RIGID SUPPORT.

To be fitted without "T" rigid support. To be fitted warm.

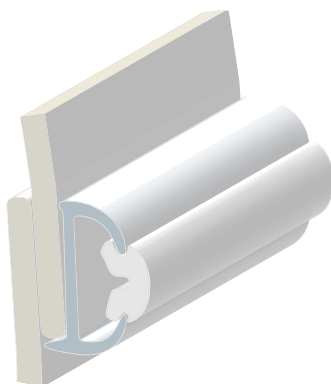
## MONTAGGIO DIRETTO

Montaggio diretto senza utilizzo del supporto a "T". Si monta tiepido.

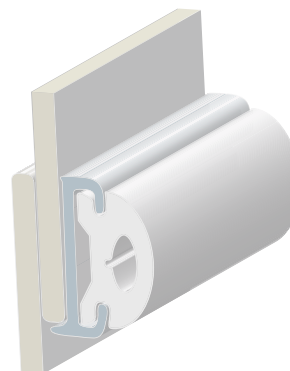
## tr series



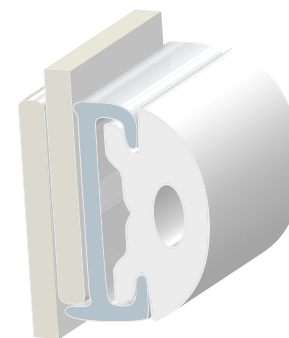
TR 30



TR 38



TR 40



TR 55

To be fitted with rigid rail made of DURALENE®. Rigid rail to be screwed or riveted cold to the boat. Soft insert to be fitted warm into the rigid rail.

Montaggio con canaline in DURALENE®. Il PVC morbido si monta a caldo, la canalina a freddo.



## ia series



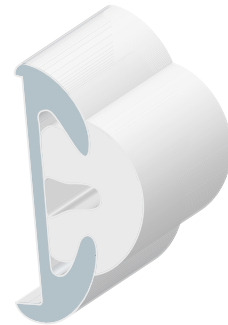
IA 15



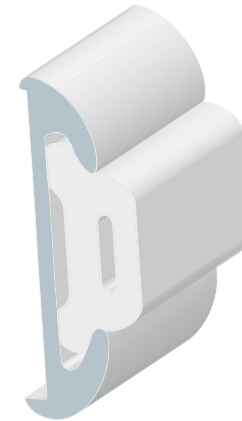
IA 18



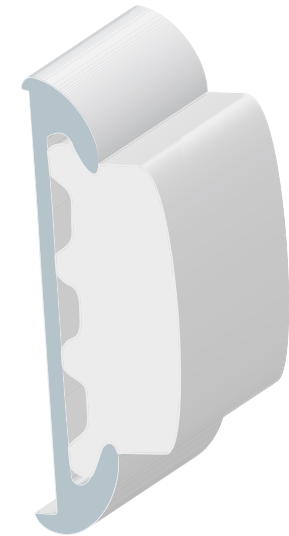
IA 20



IA 55



IA 75



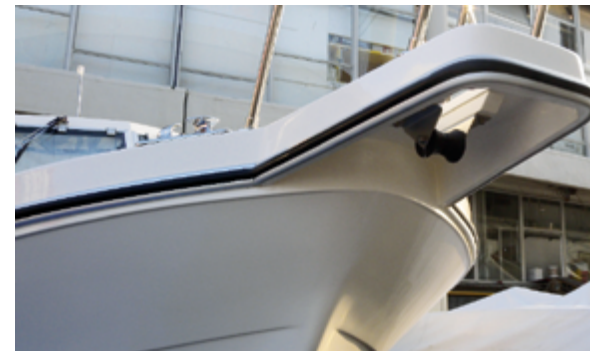
IA 100

### SOFT PVC INSERTS FOR OLD ALUMINUM RAILS.

To be fitted with rigid rail made of aluminium. Rigid rail to be screwed or riveted to the boat. Soft insert to be fitted warm into the rigid rail.

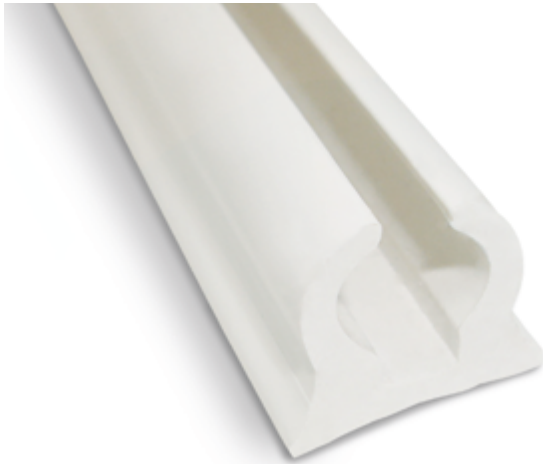
### PROFILI PER VECCHIE CANALINE IN ALLUMINIO.

Montaggio con canaline in alluminio. Il PVC morbido si monta a caldo.





# relinga rails



Rail for fixing sun-tops by means of a "relinga" insert colour white.  
Canalina per il fissaggio delle capottine tramite un inserto a relinga colore bianco.



Insert in extra soft PVC material.  
Tondi per la realizzazione di inserti relinga in PVC extramorbido.

# cushions rails



# dock fenders

pvc



ITEM	DESCRIPTION	WEIGHT	MIN. ORDER
ARTICOLO	DESCRIZIONE	PESO	ORDINE MIN.
130-100-005	Dock fender mm 60	56 oz/yd	52'
130-100-005	Protezione pontili mm 60	1.760 g/m	16 m
130-100-015	Dock fender mm 90	109 oz/yd	52'
130-100-015	Protezione pontili mm 90	3.420 g/m	16 m

ITEM	DESCRIPTION	WEIGHT	MIN. ORDER
ARTICOLO	DESCRIZIONE	PESO	ORDINE MIN.
130-060-090	Dock fender mm 72	70 oz/yd	52'
130-060-090	Protezione pontili mm 72	2.200 g/m	16 m

COLORS

item # -B

BLACK

item # -G

GREY

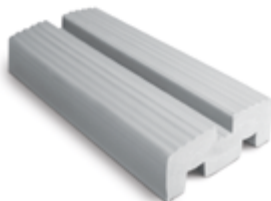
item # -W

WHITE

32

# profiles for trailers

pvc



ITEM	DESCRIPTION	WEIGHT	MIN. ORDER
ARTICOLO	DESCRIZIONE	PESO	ORDINE MINIMO
130-090-005	Profiles for launching cradles mm 40	18 oz/yd	78'
130-090-005	Profilo per invasature mm 40	550 g/m	24 m
130-090-010	Profiles for launching cradles mm 60	41 oz/yd	78'
130-090-010	Profilo per invasature mm 60	1.300 g/m	24 m
130-090-015	Profiles for launching cradles mm 80	70 oz/yd	78'
130-090-015	Profilo per invasature mm 80	2.200 g/m	24 m

COLORS

item # -B

BLACK

item # -G

GREY

item # -W

WHITE

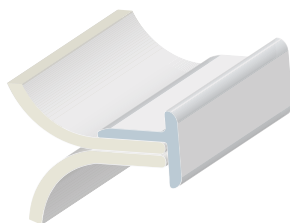
# L series



ITEM	DESCRIPTION	WEIGHT	MIN. ORDER
ARTICOLO	DESCRIZIONE	PESO	ORDINE MINIMO
<b>130-005-001</b>	Fender profile L28	18 oz/yd	164'
130-005-001	Profilo parabordo L28	560 g/m	50 m
<b>130-005-005</b>	Fender profile L30	17 oz/yd	164'
130-005-005	Profilo parabordo L30	530 g/m	50 m
<b>130-005-010</b>	Fender profile L32	24 oz/yd	164'
130-005-010	Profilo parabordo L32	760 g/m	50 m
<b>130-005-015</b>	Fender profile L35	35 oz/yd	78'
130-005-015	Profilo parabordo L35	1.100 g/m	24 m
<b>130-005-020</b>	Fender profile L45	48 oz/yd	78'
130-005-020	Profilo parabordo L45	1.500 g/m	24 m
<b>130-005-025</b>	Fender profile L50	51 oz/yd	65'
130-005-025	Profilo parabordo L50	1.590 g/m	24 m

ITEM	DESCRIPTION
ARTICOLO	DESCRIZIONE
<b>130-500-070</b>	End cap for L28
130-500-070	Terminale per L28
<b>130-500-070</b>	End cap for L30
130-005-005	Terminale per L30
<b>130-500-050</b>	End cap for L32
130-500-050	Terminale per L32
<b>130-500-050</b>	End cap for L35
130-500-050	Terminale per L35
<b>130-500-080</b>	End cap for L45
130-500-080	Terminale per L45
<b>130-500-080</b>	End cap for L50
130-500-080	Terminale per L50

ITEM	DESCRIPTION
ARTICOLO	DESCRIZIONE
<b>130-500-370</b>	Top Cap for L28
130-500-370	Coprigiunta per L28
<b>130-500-370</b>	Top Cap for L30
130-500-370	Coprigiunta per L30
<b>130-500-370</b>	Top Cap for L32
130-500-370	Coprigiunta per L32
<b>130-500-370</b>	Top Cap for L35
130-500-370	Coprigiunta per L35
<b>130-500-350</b>	Top Cap for L45
130-500-350	Coprigiunta per L45
<b>130-500-350</b>	Top Cap for L50
130-500-350	Coprigiunta per L50



ITEM	DESCRIPTION	BAR LENGTHS	PACKAGING
ARTICOLO	DESCRIZIONE	LUNGHEZZA BARRA	CONFEZIONE DA
<b>130-010-005</b>	Rigid support T16 for L32	6'	196'
130-010-005	Supporto rigido T16 per L32	2 m	60 m
<b>130-010-010</b>	Rigid support T18 for L35	6'	196'
130-010-010	Supporto rigido T18 per L35	2 m	60 m
<b>130-010-015</b>	Rigid support T22 for L45/L50	6'	196'
130-010-015	Supporto rigido T22 per L45/L50	2 m	40 m

# tr series

pvc



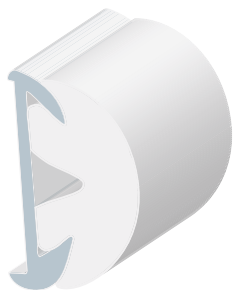
34

ITEM	DESCRIPTION	WEIGHT	MIN. ORDER
ARTICOLO	DESCRIZIONE	PESO	ORDINE MIN.
<b>130-015-011</b>	Track TR30	10 oz/yd	196'
130-015-011	Canalina TR30	300 g/m	60 m
<b>130-015-012</b>	Soft profile TR30	12 oz/yd	196'
130-015-012	Inserto TR30	370 g/m	60 m
<b>130-015-016</b>	Track TR38	9 oz/yd	196'
130-015-016	Canalina TR38	310 g/m	60 m
<b>130-015-017</b>	Soft profile TR38	7 oz/yd	196'
130-015-017	Inserto TR38	220 g/m	60 m
<b>130-015-021</b>	Track TR40	12 oz/yd	196'
130-015-021	Canalina TR40	388 g/m	60 m
<b>130-015-022</b>	Soft profile TR40	16 oz/yd	196'
130-015-022	Inserto TR40	500 g/m	60 m
<b>130-015-031</b>	Track TR55	22 oz/yd	157'
130-015-031	Canalina TR55	680 g/m	48 m
<b>130-015-032</b>	Soft profile TR55	31 oz/yd	157'
130-015-032	Inserto TR55	980 g/m	48 m

ITEM	DESCRIPTION
ARTICOLO	DESCRIZIONE
<b>130-500-010</b>	End cap for TR30
130-500-010	Terminale per TR30
<b>130-500-310</b>	Top Cap for TR30
130-500-310	Coprigiunta per TR30
<b>130-500-020</b>	End cap for TR38
130-500-020	Terminale per TR38
<b>130-500-320</b>	Top Cap for TR38
130-500-320	Coprigiunta per TR38
<b>130-500-040</b>	End cap for TR40
130-500-040	Terminale per TR40
<b>130-500-340</b>	Top Cap for TR40
130-500-340	Coprigiunta per TR40
<b>130-500-030</b>	End cap for TR55
130-500-030	Terminale per TR55
<b>130-500-330</b>	Top Cap for TR55
130-500-330	Coprigiunta per TR55

# ia series

pvc

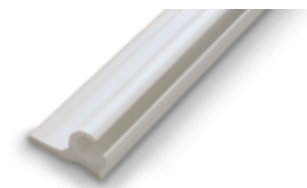
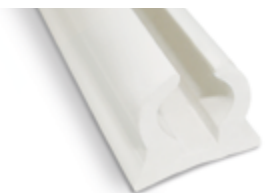


Alluminum rails not supplied. Canalina in alluminio non fornita.

ITEM ARTICOLO	DESCRIPTION DESCRIZIONE	WEIGHT PESO	MIN. ORDER ORDINE MIN.
130-040-010	Fender profile IA15	9 oz/yd	164'
130-040-010	Profilo parabordo IA15	280 g/m	50 m
130-040-015	Fender profile IA18	12 oz/yd	164'
130-040-015	Profilo parabordo IA18	390 g/m	50 m
130-040-020	Fender profile IA20	18 oz/yd	164'
130-040-020	Profilo parabordo IA20	570 g/m	50 m
130-040-030	Fender profile IA55	25 oz/yd	164'
130-040-030	Profilo parabordo IA55	770 g/m	50 m
130-040-040	Fender profile IA75	28 oz/yd	98'
130-040-040	Profilo parabordo IA75	870 g/m	30 m
130-040-045	Fender profile IA100	54 oz/yd	98'
130-040-045	Profilo parabordo IA100	1.680 g/m	30 m

35

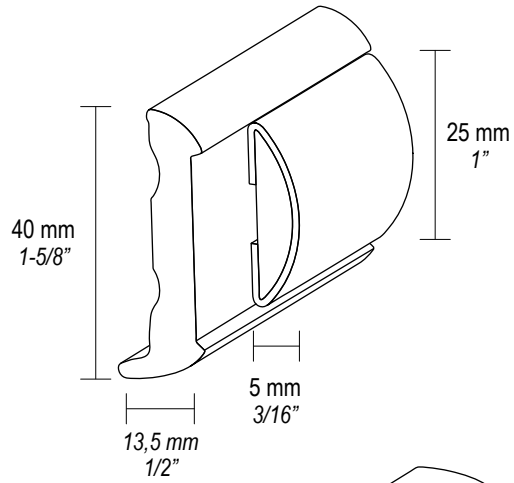
## relinga rails & cushions rails



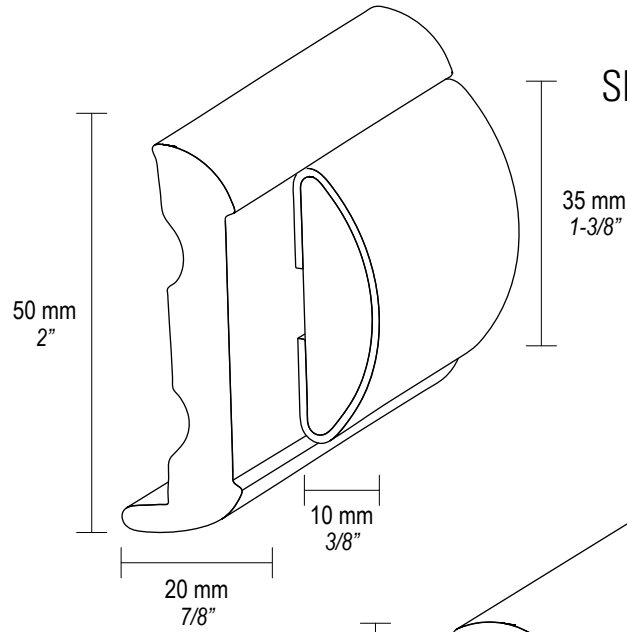
ITEM ARTICOLO	DESCRIPTION DESCRIZIONE	WEIGHT PESO	PACKAGING CONFEZIONI DA
140-050-057	Relinga rail	6 oz/yd	196'
140-050-057	Canalina per relinga	190 g/m	60 m
140-050-059	Insert for relinga rail	2 oz/yd	196'
140-050-059	Inserito per canalina	51 g/m	60 m
140-050-058	Cushion profile - bars of 4 m		196'
140-050-058	Profilo per cuscineria - barre 4 m		60 m

# technical guide

**SPHÆRA 25**



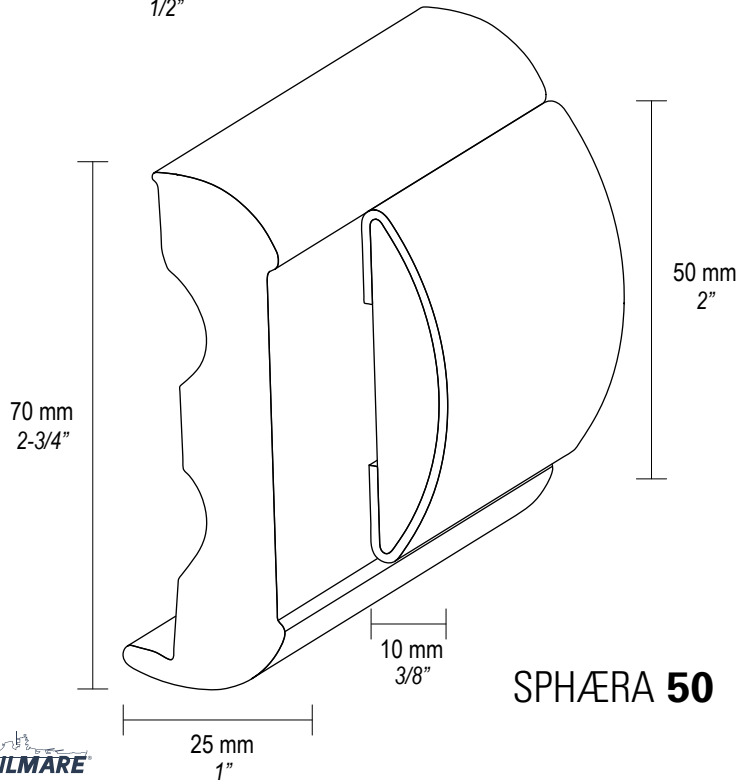
**SPHÆRA 35**



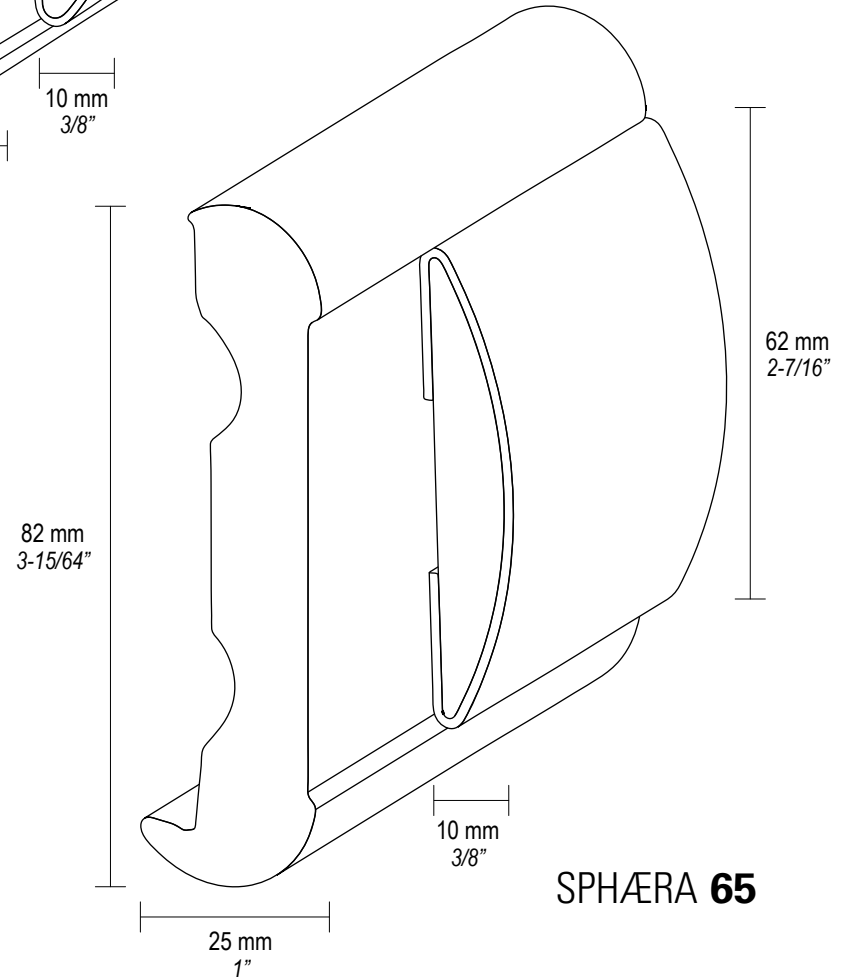
sphæra®

**PATENTED**

engineered by REZZONICO RANIERI  
made by TESSILMARE



**SPHÆRA 50**

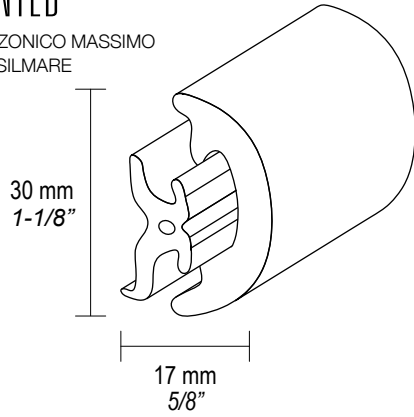


**SPHÆRA 65**

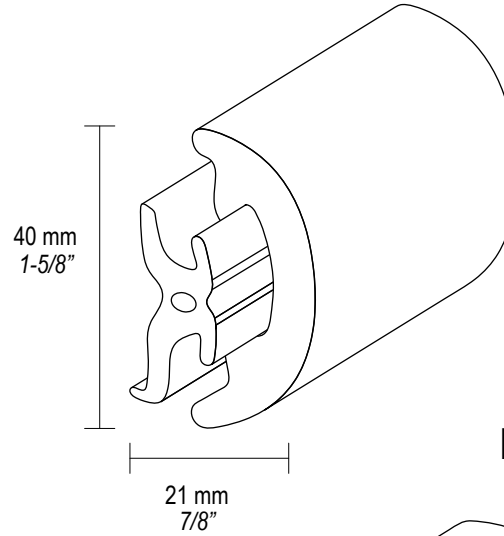
# RADIAL<sup>®</sup>

PATENTED

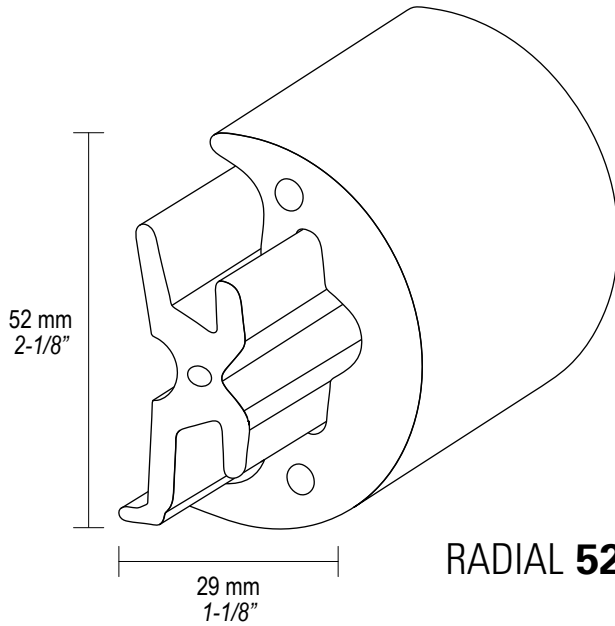
engineered by REZZONICO MASSIMO  
made by TESSILMARE



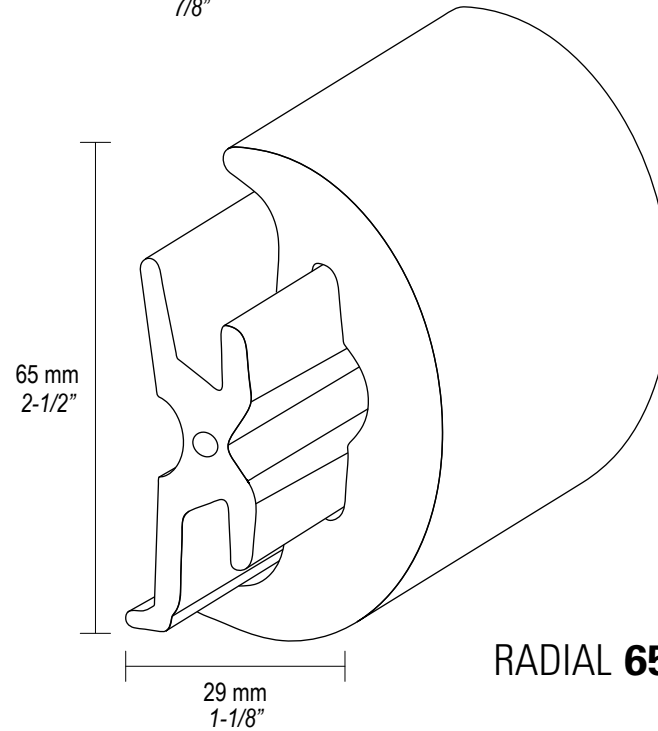
**RADIAL 30**



**RADIAL 40**

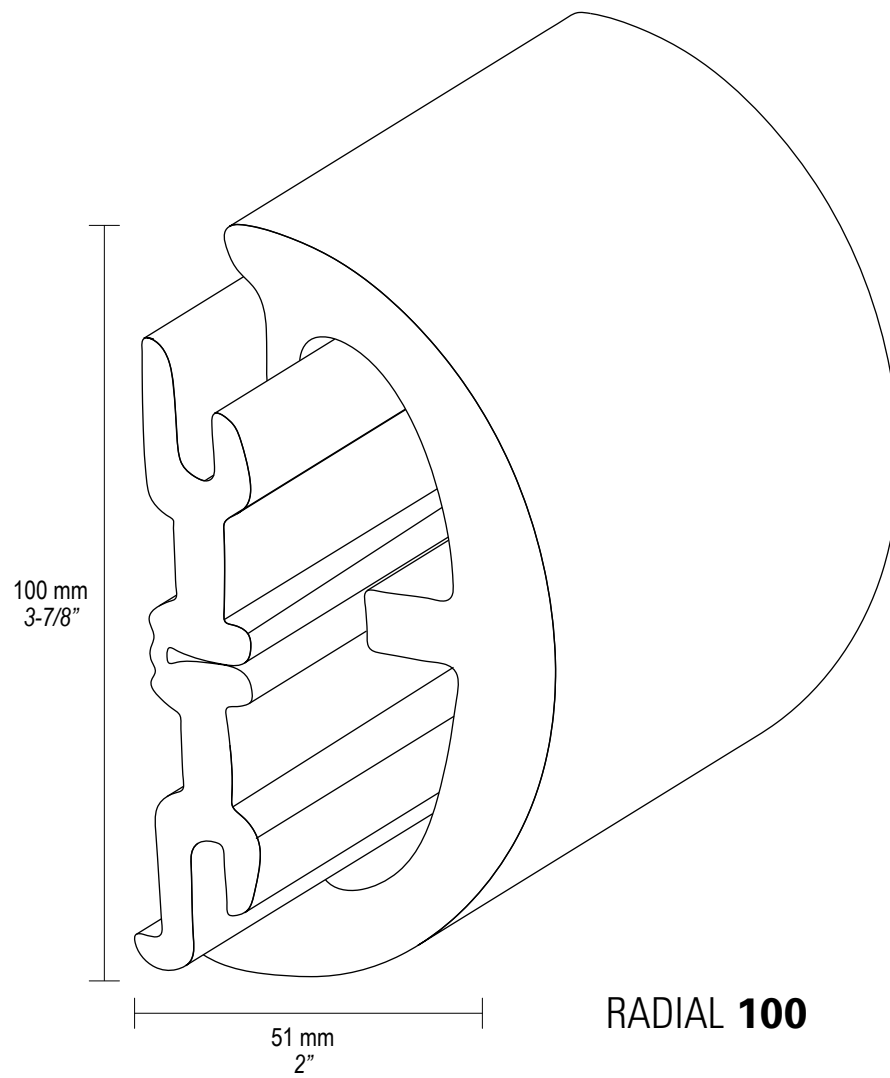
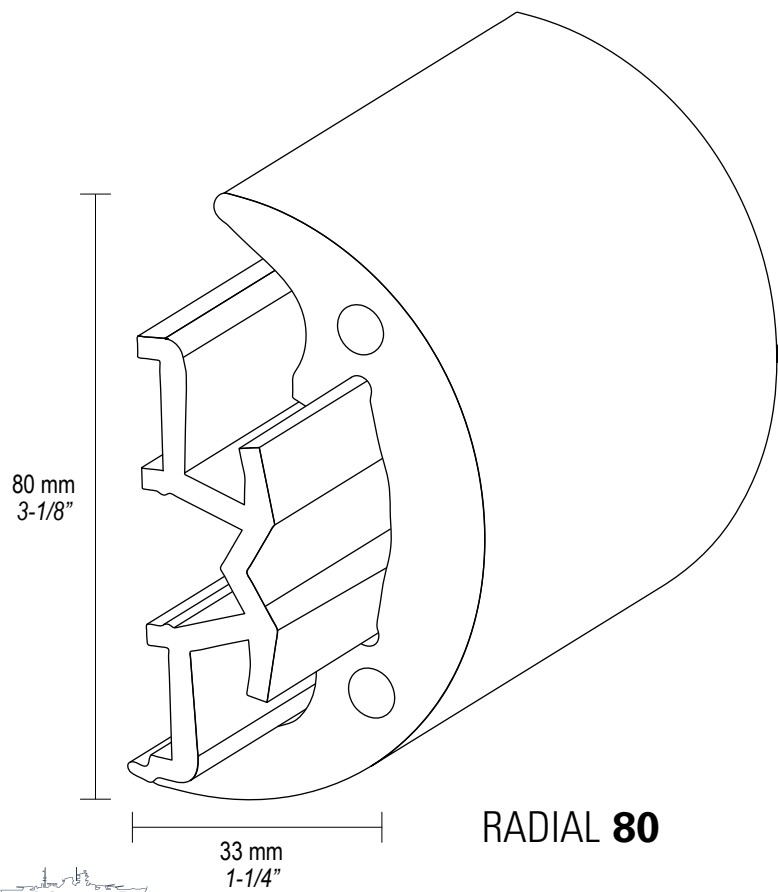


**RADIAL 52**



**RADIAL 65**



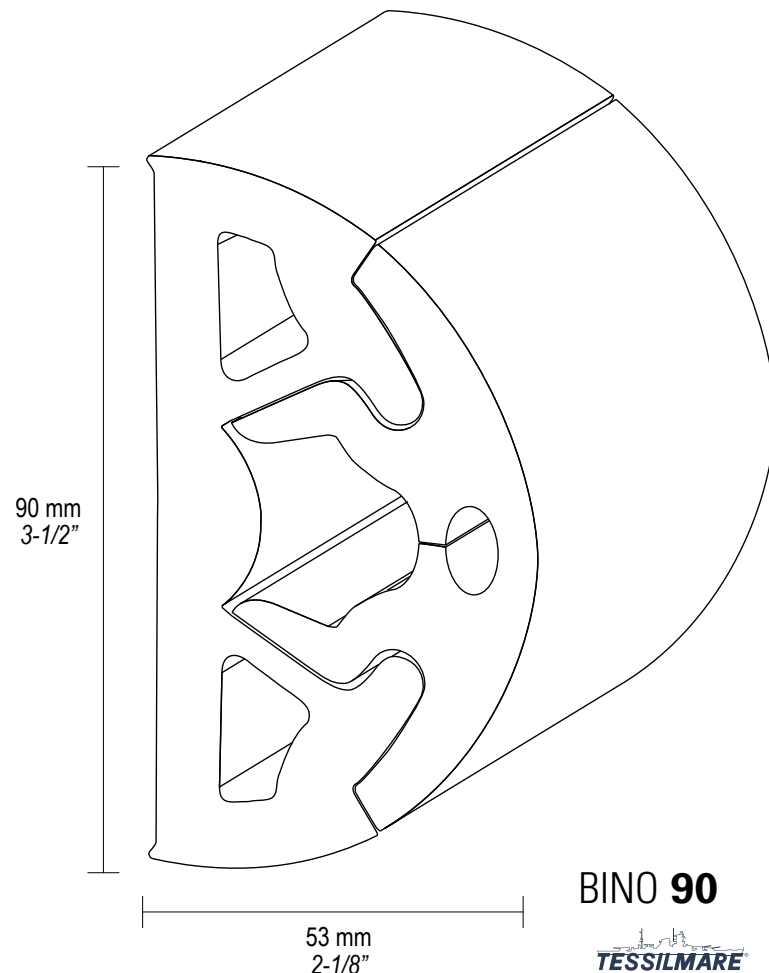
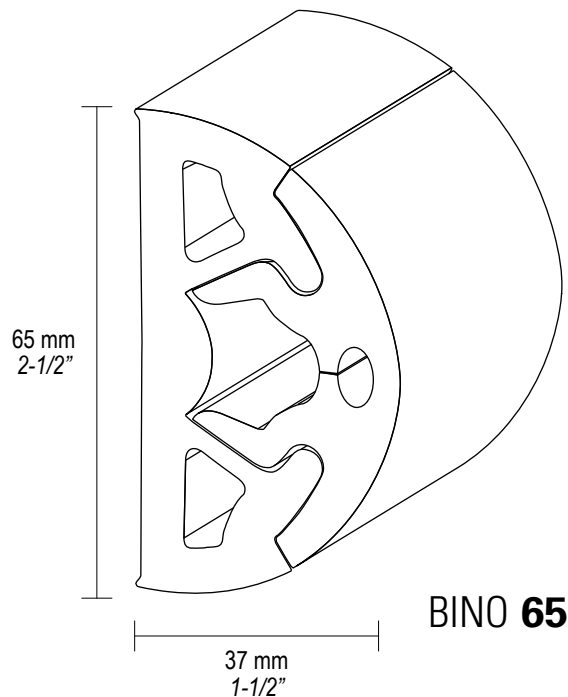
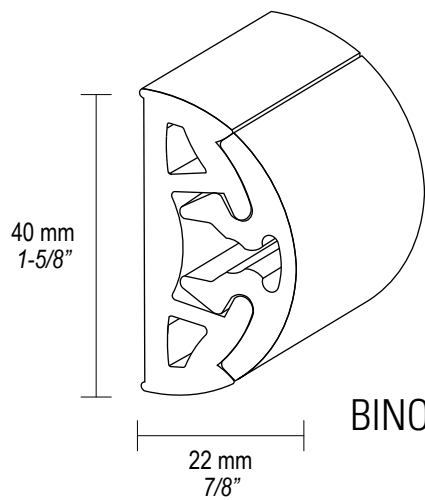


# mino

PATENTED

engineered by REZZONICO MASSIMO  
made by TESSILMARE

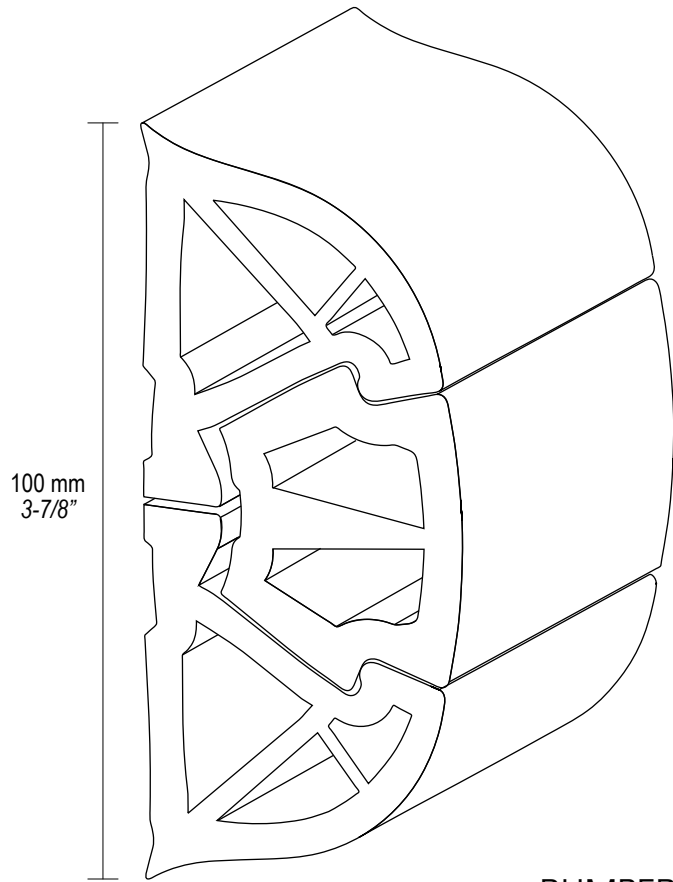
40



# bumper

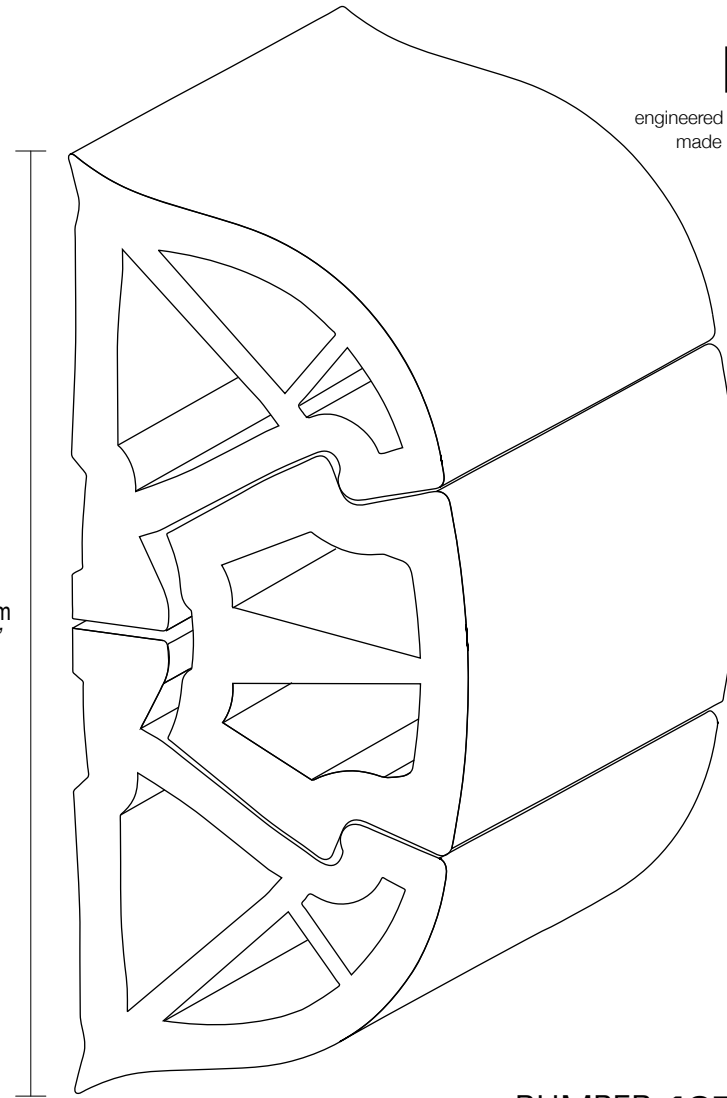
PATENTED

engineered by REZZONICO MASSIMO  
made by TESSILMARE



**BUMPER 100**

125 mm  
4-7/8"

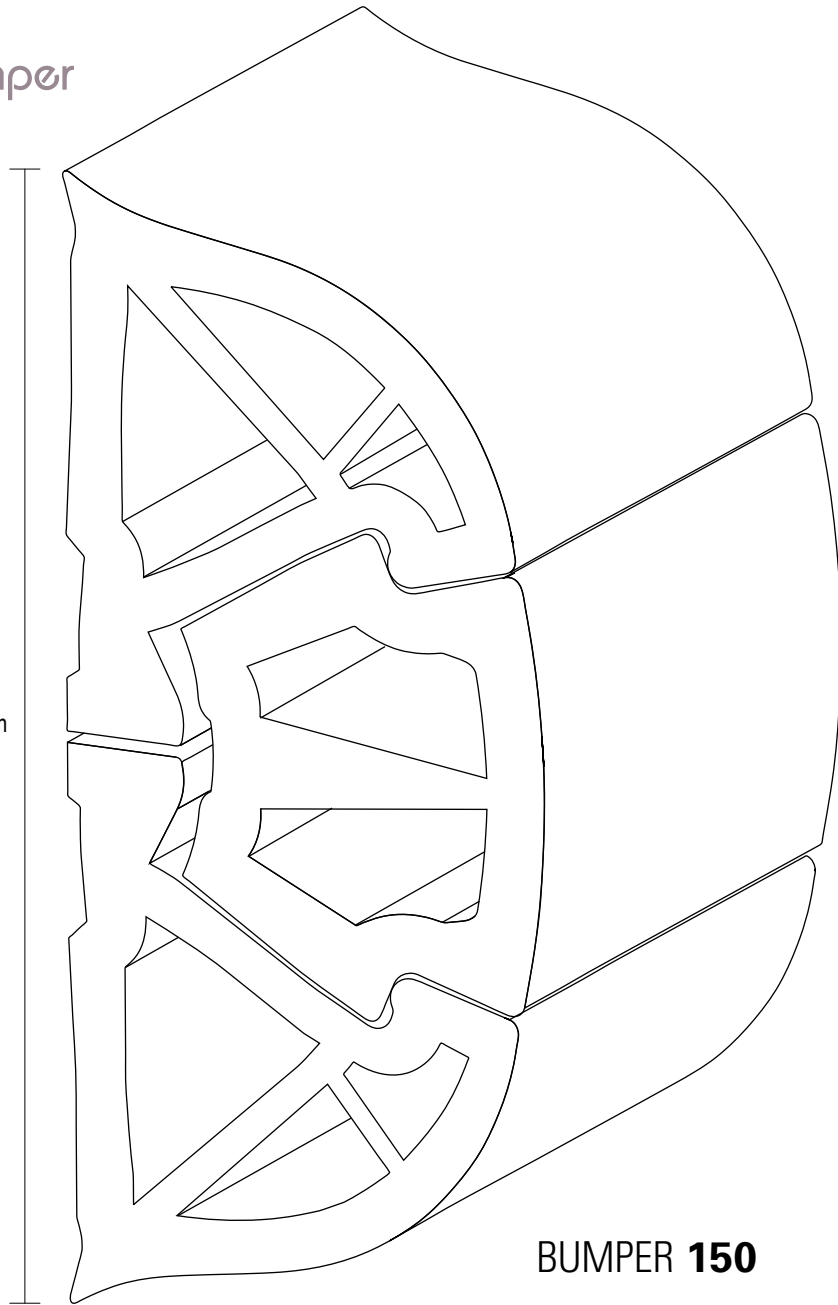


**BUMPER 125**

bumper

42

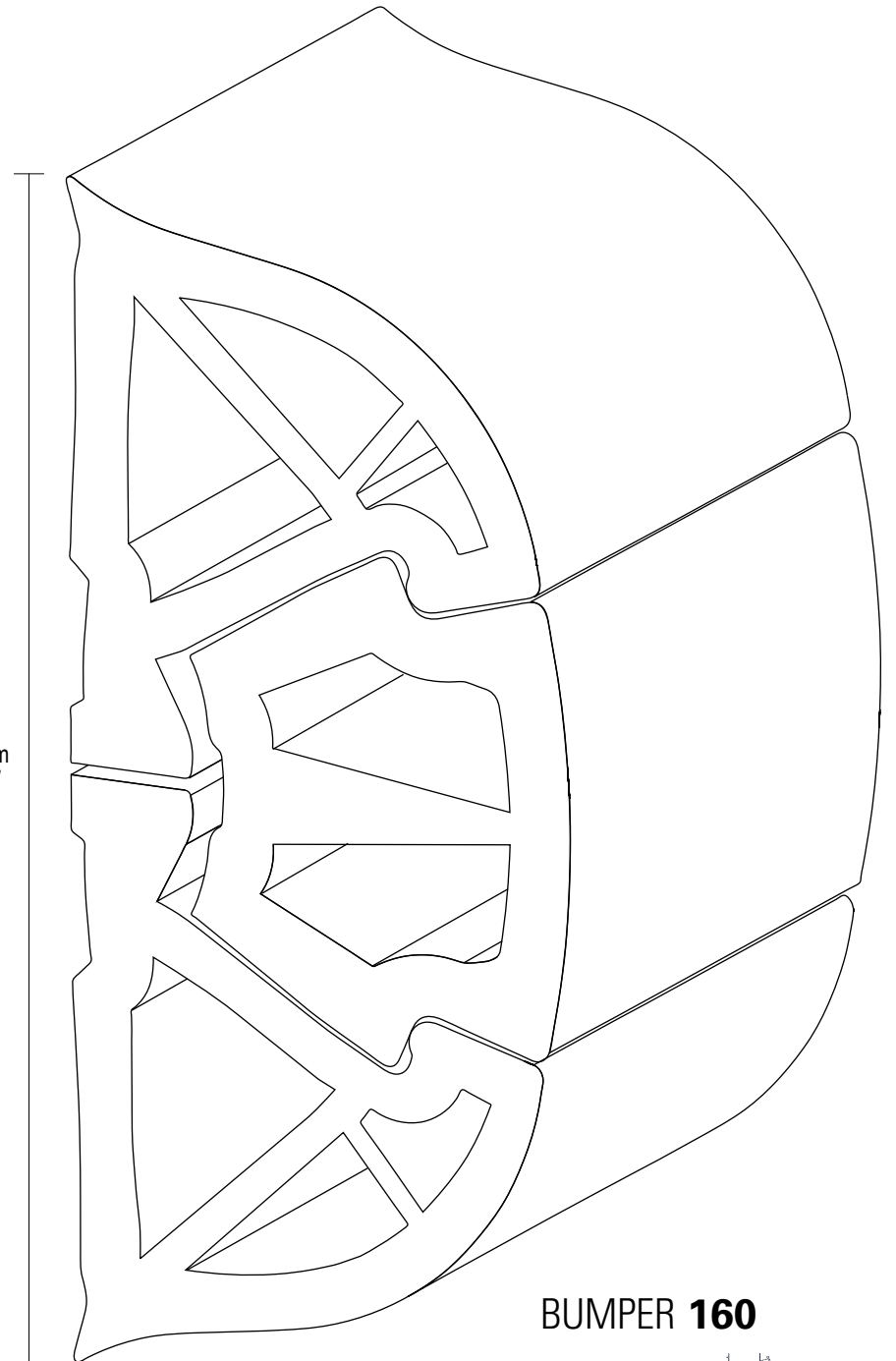
150 mm  
5-7/8"



**BUMPER 150**

70 mm  
2-3/4"

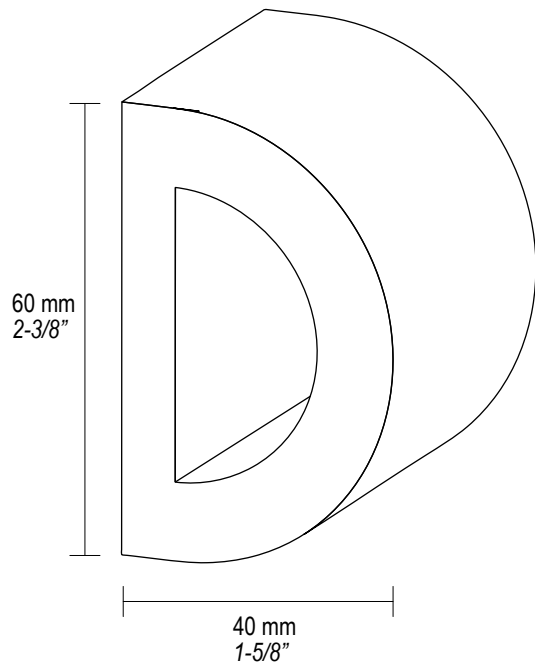
160 mm  
6-1/4"



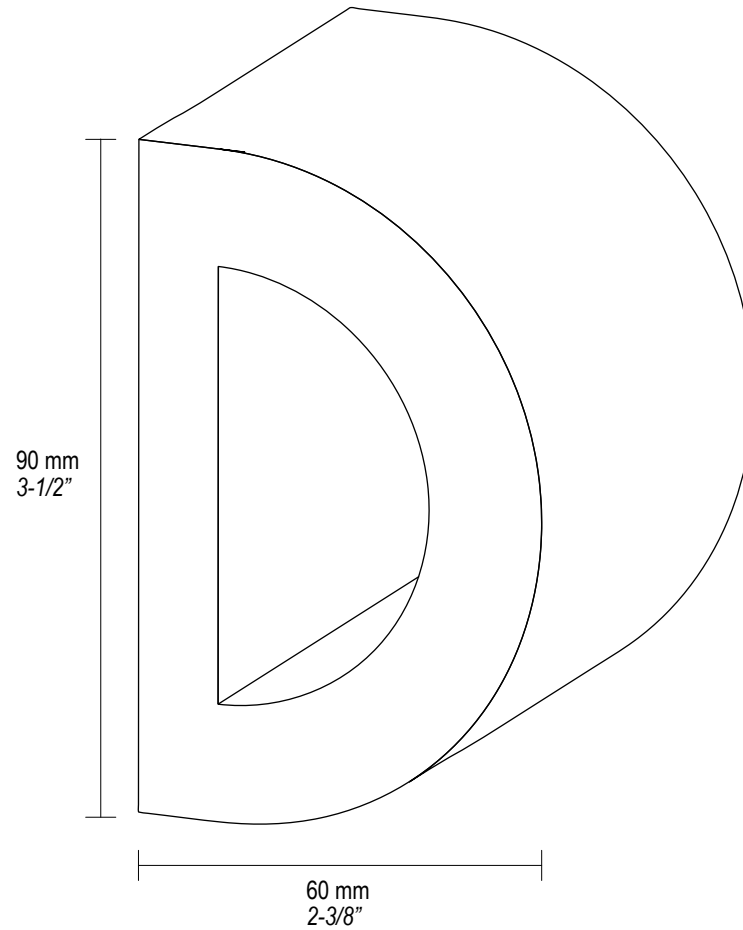
**BUMPER 160**

75 mm  
3"

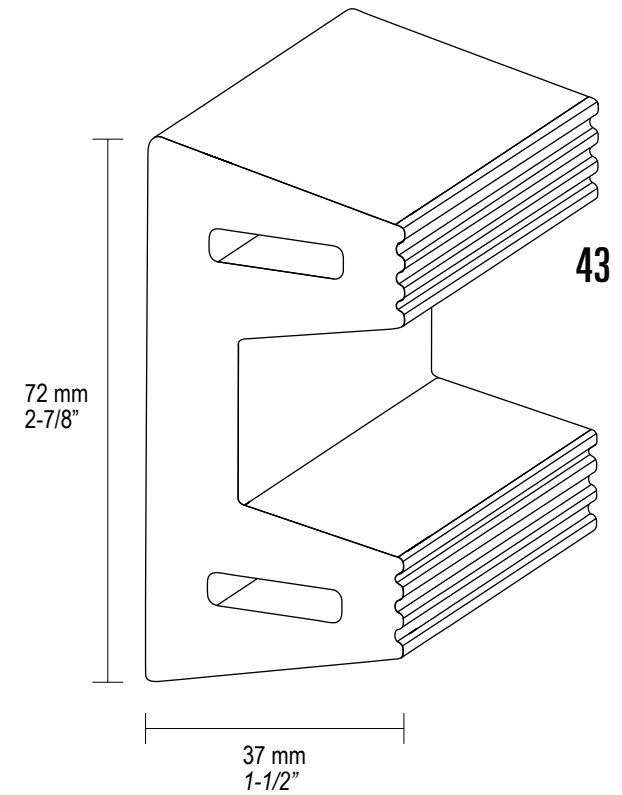
# dock fenders



**DOCK 60**



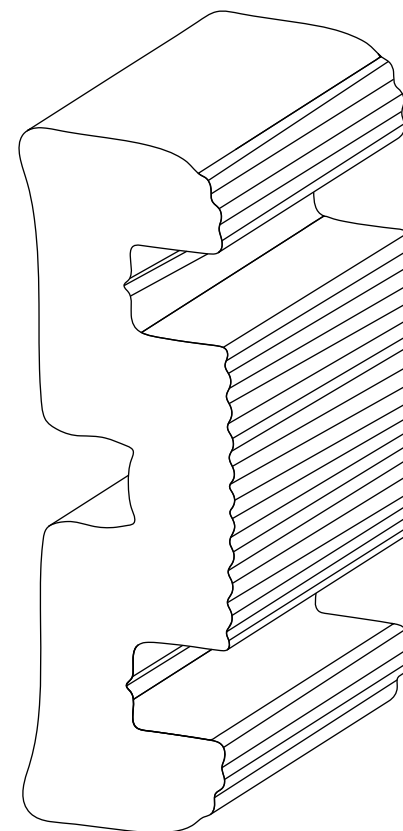
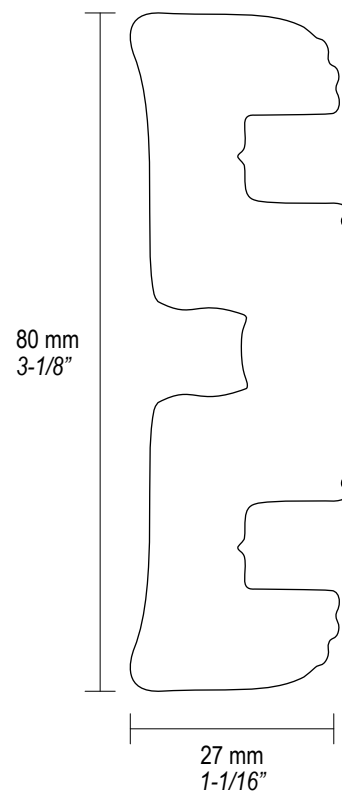
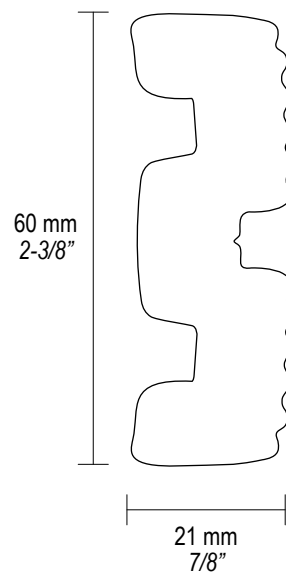
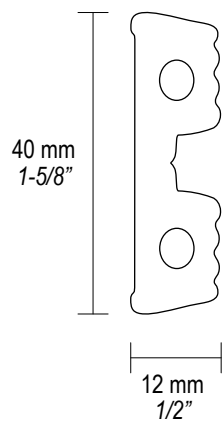
**DOCK 90**



**DOCK 72**

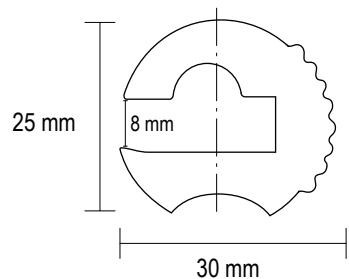
# profiles for trailers

44

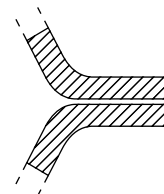
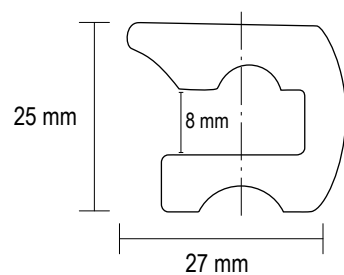


# L series

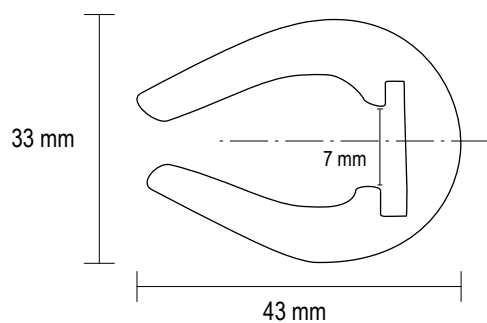
**L 28**



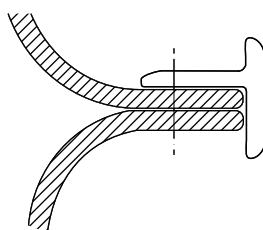
**L 30**



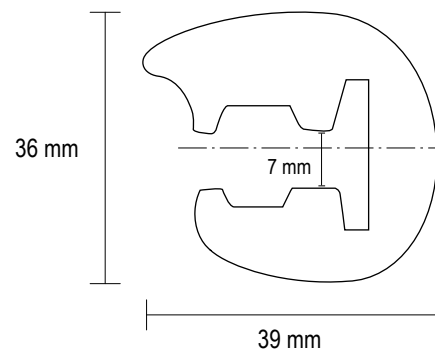
**L 32**



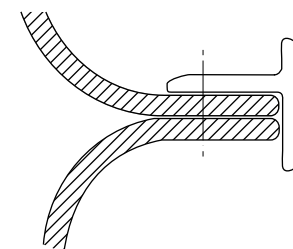
**T 16**



**L 35**

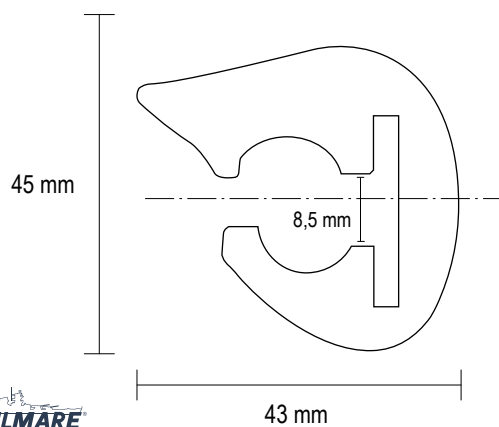


**T 18**

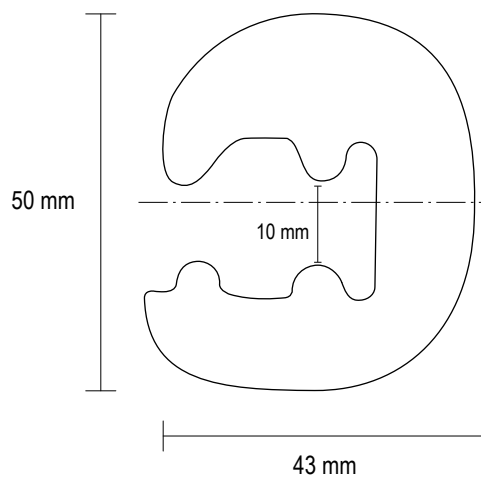


45

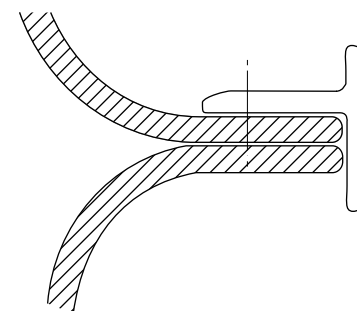
**L 45**



**L 50**

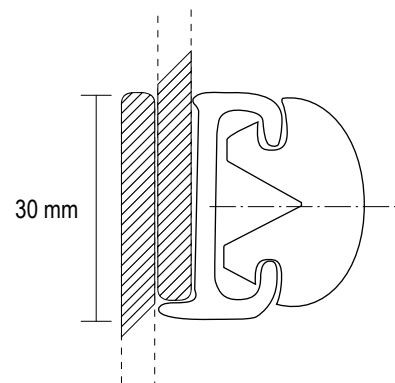


**T 22**

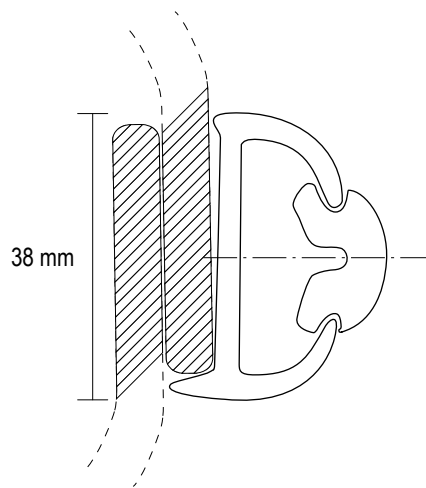


# tr series

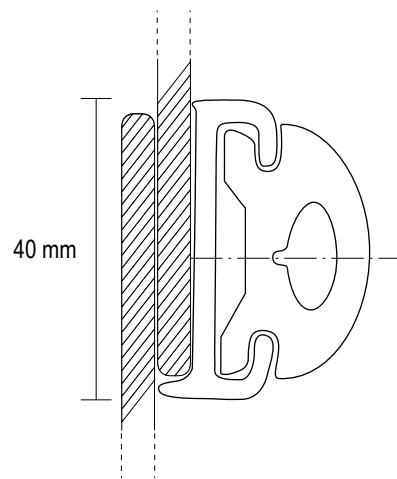
46



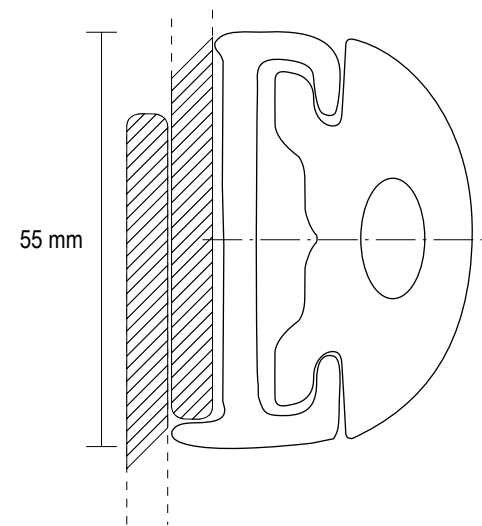
TR 30



TR 38



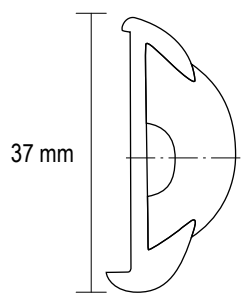
TR 40



TR 55

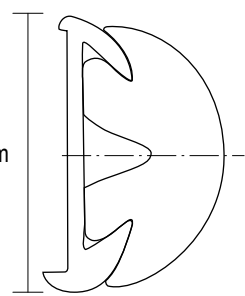


**ia** series



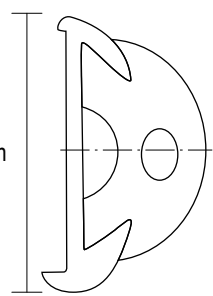
37 mm

**IA 15**



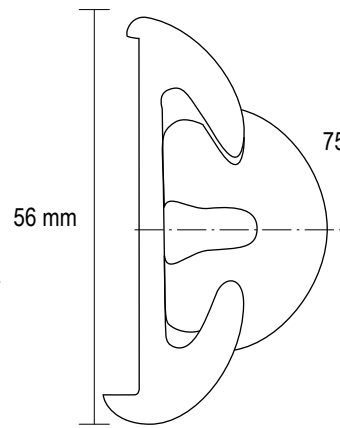
37 mm

**IA 18**



37 mm

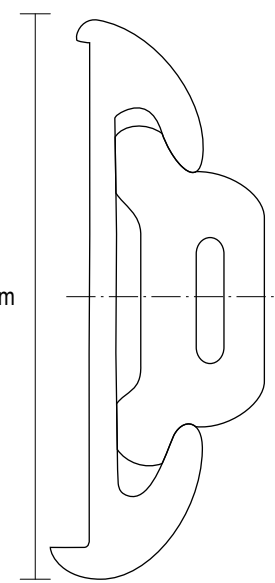
**IA 20**



56 mm

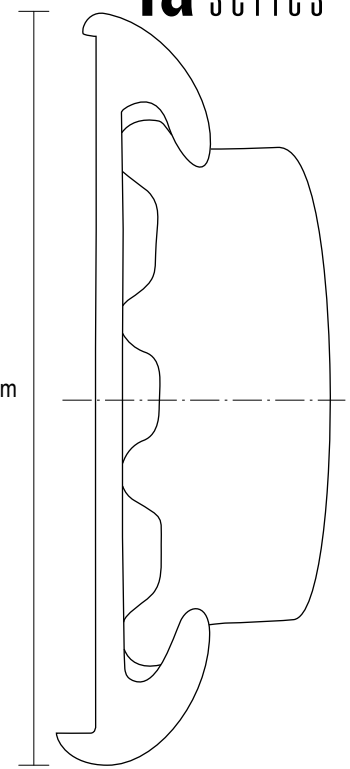
75 mm

**IA 55**



100 mm

**IA 75**



47

**IA 100**



13 mm  
1/2"

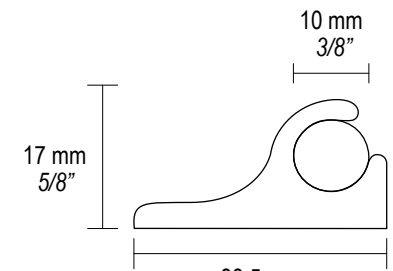
14 mm  
1/2"

**140-050-057**



6,5 mm  
1/4"

**140-050-059**



17 mm  
5/8"

10 mm  
3/8"

33,5 mm  
1-1/8"

**140-050-058**

**relinga** series



# MATE GROUP MATE USA

Mate Group è il brand italiano che nasce dalla collaborazione storica tra **Marco** e **Tessilmare** e si propone come protagonista nel contesto mondiale del settore nautico.

L'esperienza internazionale delle due case italiane di produzione è il riferimento per il progetto che vede impegnato Mate Group in un ambizioso percorso distributivo.

Mate Group si è strutturato per rispondere con creatività agli stimoli e alle richieste contemporanee del mercato globale individuando scenari che integrino con equilibrio le soluzioni tecnologiche e gli strumenti di comunicazione informatici.

La ricerca di un elevato contenuto di servizio proietta Mate Group a fianco del suo interlocutore come partner adeguato e interprete competente delle differenti culture di mercato.



MATE GROUP È PRESENTE SUL MERCATO AMERICANO CON **MATE USA**.

MATE GROUP IS ON THE AMERICAN MARKET WITH **MATE USA**.

[www.mate-usa.com](http://www.mate-usa.com)

**MATE**  
GROUP



Mate Group is the Italian brand born thanks to the co-operation between **Marco** and **Tessilmare** and aims to achieve a leading role in the worldwide marine field.

The international experience of both Italian companies is the base on which Mate Group built its ambitious distribution plan.

Mate Group was structured to meet the expectations of the global market, by looking for new scenarios, which combine technological solutions and communication electronic tools.

Mate Group stands by its client's side as a skilled and experienced partner in the various market trends.







via V. Veneto, 15  
23896 Bevera di Sirtori (Lecco) - Italy  
Tel. +39 039.92.15.71 Fax +39 039.92.10.483  
[www.rubrails-tessilmare.com](http://www.rubrails-tessilmare.com) [www.tessilmare.com](http://www.tessilmare.com)  
[info@tessilmare.com](mailto:info@tessilmare.com)



MATE USA Llc.  
3251-A S.W. 13<sup>th</sup> Drive - Deerfield Beach  
FL 33442 U.S.A.  
Ph. (+1) 954.463.5757 Fax (+1) 954.463.5635  
[www.mate-usa.com](http://www.mate-usa.com) [info@mate-usa.com](mailto:info@mate-usa.com)