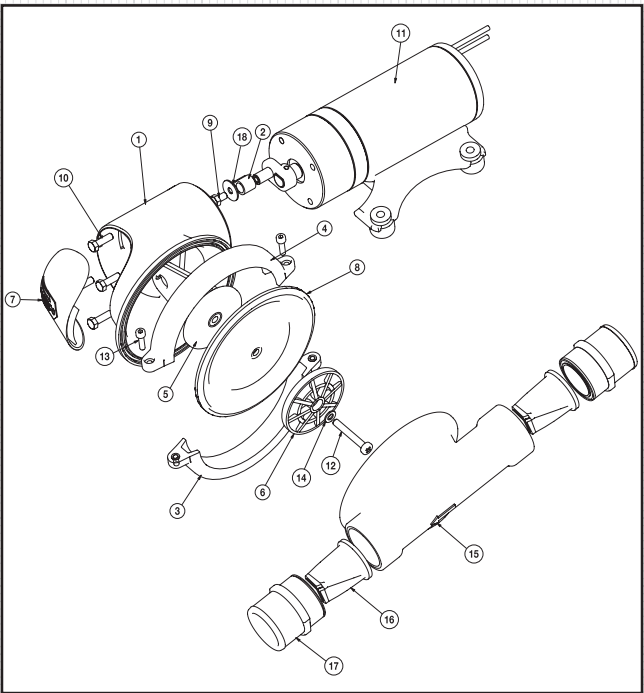


# EXPLODED VIEW



## Part Numbers

Model	Voltage	Fuse Sizes
50890-1000	12V	10A
50890-1100	24V	5A

## Service Kit (Includes\*)

SK890	Service Kit - Waste Pump
-------	--------------------------

Key	Description	*Quantity in Kit
1	Bracket	
2	Bush	
3	Clamp Bottom	
4	Clamp Top	
5	Con Rod	
6	Con Rod Plate	
7	Cover	1
8	Diaphragm	1
9	Hex Head Screw	
10	Hex Head Screw	4
11	Motor Assembly	
12	Screw Recessed Pan Head	1
13	Socket Head Screw	
14	Washer	1
15	Waste Pump Chamber	
16	Waste Pump Joker Valve	2
17	Waste Pump Port	2
18	Washer	

