



ADDENDUM GO XSE

- **sw release 2.0**

This addendum documents new features that are included in GO XSE software release 2.0 and that are not described in the GO XSE Operator manual or other documentation.

Feature	Page
Software upgrades	3
• Network analyzer and service assistant	3
• Update software	3
• Backing up your system data	4
Navionics charts	5
• Dock-to-dock Autorouting	5
• SonarChart Live	5
• New SonarChart Live tide correction option	6
• View menu option changes	7

Software upgrades

The latest software is available for download from our website, www.simrad-yachting.com.

Before initiating an update to the unit itself, be sure to back up any potentially valuable user data. Refer to *"Backing up your system data"* on page 4.

The system or the Network analyzer and service assistant can advise software updates are available.

Network analyzer and service assistant

The system has a built-in service assistant that creates a report of the devices installed on the NMEA 2000 network such as the software versions, serial numbers, and information from the settings file to assist in technical support enquiries.

To use the analyzer, open the About page of the System settings dialog and select Support. Two options are displayed:

Create report

Analyzes your network and prompts you for information required for support and creates the report with information automatically gathered from the network. You can add screenshots and log files that will be attached to the report. There is a 20MB limit for the report attachments. You can save the report to a memory card and email it to support or upload it directly if you have an internet connection. If you call technical support first, you can enter an Incident number to assist with tracking.

Check system for updates

Analyzes your network and checks if updates are available for compatible devices.

→ **Note:** Connect your unit to the internet to check for the latest available software versions. The software versions will be up to date as of the last time you updated your unit or connected to the internet.

Update software

→ **Note:** Remove any mapping cards from your unit and install a memory card with sufficient storage before downloading

software updates or creating and saving reports to the memory card.

- **Note:** Do not turn off the MFD or device until the update is completed or you are prompted to restart the unit or device being updated.
1. If your MFD is connected to the Internet, you can download the software update from the **Updates Dialog** into a memory card. You can also download the software update from www.simrad-yachting.com to a memory card inserted in a smart device or PC connected to the internet.
 2. Insert the card containing the software updates in your MFD.
 3. Select the item to be updated in the **Updates Dialog** and follow the prompts.

As you respond to the prompts the update occurs. Prompts may request that you restart the device to complete the update. You can restart devices to complete the update later at a more convenient time.

Backing up your system data

Waypoints, Routes, and Tracks that you create are filed in your system. It is recommended to regularly copy these files and your system settings files as part of your back-up routine. The files can be copied to a card inserted in the card reader.

There are no export file format options for the system settings file. The following output formats are available for exporting Waypoints, Routes, and Tracks files:

- **User Data File version 5**
This is used to import and export waypoints and routes with a standardized universally unique identifier (UUID), which is very reliable and easy to use. The data includes such information as the time and date when a route was created.
- **User Data File version 4**
This is best used when transferring data from one system to another, since it contains all the extra bits of information these systems store about items.
- **User Data file version 3 (w/depth)**
Should be used when transferring user data from one system to a legacy product (Lowrance LMS, LCX)
- **User data file version 2 (no depth)**

Can be used when transferring user data from one system to a legacy product (Lowrance LMS, LCX)

- **GPX (GPS Exchange, no depth)**

This is the format most used on the web that shares among most GPS systems in the world. Use this format if you are taking data to a competitor's unit.

- **Northstar.dat (no Tracks)**

Used to transfer data to a legacy Northstar device.

Navionics charts

Some Navionics features require the most current data from Navionics. For those features, a message is displayed stating that the feature is unavailable if you do not have the appropriate Navionics charts or chart card inserted. For more information on what is required for these features, refer to www.navionics.com

Dock-to-dock Autorouting

The Navionics' **Autorouting** option is changed to **Dock-to-dock Autorouting**.

You use Dock-to-dock Autorouting in the same manner as you used Autorouting. For more information, refer to the operator manual. In addition, Quick Info is supported.

→ **Note:** Units designed for sale in the U.S. region do not have Dock-to-dock Autorouting capabilities. Dock-to-dock Autorouting features are disabled on all non-U.S. units when they are used in U.S. territorial waters.

Quick Info

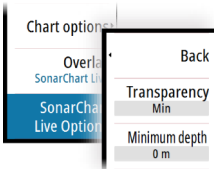
Warning symbols are shown on route legs to identify possible dangerous items (for example, 'Shallow water'). Select the warning symbol to view the quick info pop-up which will tell you what the possible danger is.

SonarChart Live

SonarChart Live is a real-time feature where the device creates an overlay of depth contours based on your own live sonar soundings.

In the Navionics chart menu, select **Overlay** and then **SonarChart Live** to display it as an overlay on the chart.

When you select SonarChart Live overlay the menu expands to display SonarChart Live Options. Use the options to set the transparency and minimum depth.



Transparency

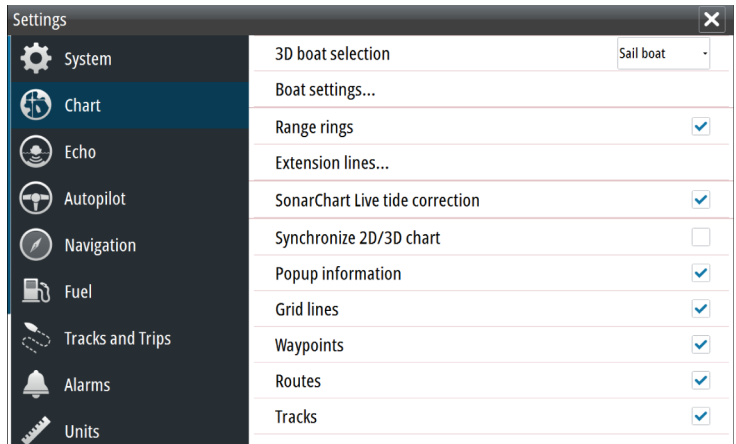
The SonarChart Live overlay is drawn on top of other chart data. The chart data is completely covered at minimum transparency. Adjust the transparency to allow the chart details to be seen.

Minimum depth

Adjusts what SonarChart Live rendering treats as the safety depth. This affects the coloring of the SonarChart Live area. As the vessel approaches the safety depth, the SonarChart Live area will gradually change from a simple grey/white to red.

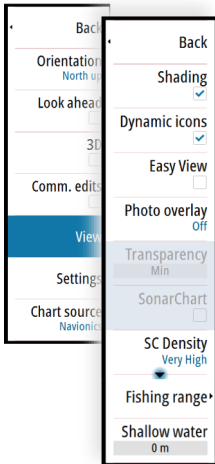
New SonarChart Live tide correction option

The new SonarChart Live tide correction option is added to the Chart Settings dialog.



SonarChart Live tide correction

When selected, the tide correction feature uses information from nearby tide stations (if available) to adjust the depth values used by SonarChart Live as the sonar is recorded.



View menu option changes

The Navionics' feature **Fish N' Chip** is renamed to **SonarChart**.

The **SC Density** menu option is new for SonarChart Live.

The **Depth range highlight** menu option is renamed to **Fishing range**.

SonarChart

The system supports the Navionics SonarChart feature.

SonarChart displays a bathymetry map showing high resolution contour detail and standard navigational data. For more information, refer to www.navionics.com.

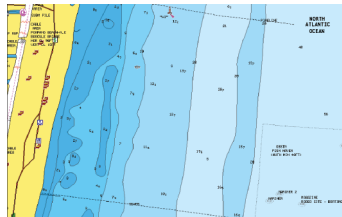
SC Density

Controls the density of the SonarChart and SonarChart Live contours.

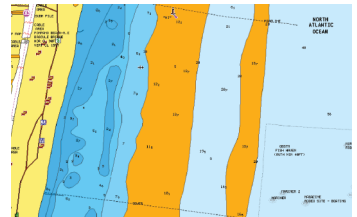
Fishing range

Select a range of depths between which Navionics fills with a different color.

This allows you to highlight a specific range of depths for fishing purposes. The range is only as accurate as the underlying chart data, meaning that if the chart only contains 5 meter intervals for contour lines, the shading is rounded to the nearest available contour line.



No Depth highlight range



Depth highlight range: 6 m - 12 m

