

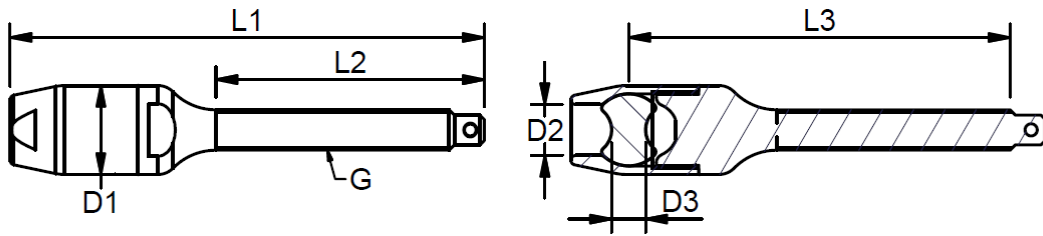


FIBERROPE T-TERMINAL

High Polished Stainless Steel – AISI 316



TECHNICAL DRAWING



DATA TABLE

FIBERROPE T-TERMINAL

ART.NO.	Size	D1	D2	D3	D4	D5	G	L1	L2	L3	BL/KG	KG
RP800406A	4	7.5	16	14,6	6	8	5/16"	60	19	42	1900	5.2
RP800408A	4	7.5	16	16	6	8	5/16"	60	19	42	1900	5.4
RP621904	4	9	16	19	6	8	3/8"	60	18	40	1900	6.5
RP621405	5	9	21	14,6	8	12	3/8"	66	18	45	3200	9.4
RP621905	5	9	21	19	8	12	3/8"	68	18	45	3200	10.0
RP622005	5	12.6	21	20	8	12	1/2"	70	19	48	3200	11.0
RP622105	5	12.6	21	21,3	8	12	1/2"	70	19	48	3200	12.0
RP622006	6	12.6	25	20	10	14	1/2"	76	20	51	5500	17.0
RP622106	6	12.6	25	21,3	10	14	1/2"	76	19	51	5500	17.0
RP622606	6	14.2	25	26,5	10	14	9/16"	88	23	59	5500	21.0
RP622608	8	16	39	26,3	16	20	5/8"	119	31	82	8250	57.0
RP622708	8	17.8	39	27,5	16	20	3/4"	120	31	83	9400	58.0

10mm -
12mm only
on request
!!!

Assemble
instruction
look at
page 10