

USB DRIVER INSTALLATION FOR WINDOWS SYSTEMS

Make sure you have the AMEC Camino-108/108W Driver CD in hand before following these instructions. The Driver CD is included with each of AMEC AIS unit.

Required Items

1. Driver CD (Included with the Unit)
2. USB Cable (Included with the Unit)
3. Windows PC (Not Included)

Note: Camino-108/108W Driver supports Windows XP, Vista, Windows 7 and Windows 8/8.1. Depending on your Windows version, the driver installation procedure is different for each respective OS release. Please see below for step-by-step driver installation with respect to each OS release.

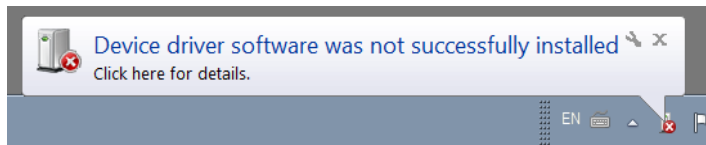
4. Power Supply (Not Included)

1 WINDOWS XP, VISTA AND WINDOWS 7

1.1 Installation Procedures

Please familiarize with the manual content before begin installation. Use the following recommended steps for installation.

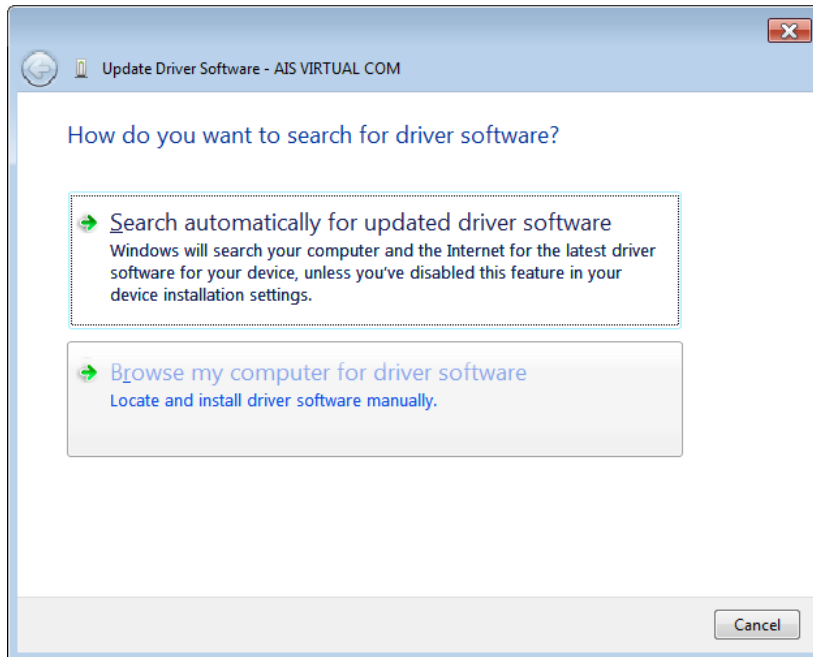
- 1.1.1** Insert the Driver CD to your PC CD/DVD Slot.
- 1.1.2** Connect the Camino-108/108W unit to a power source.
- 1.1.3** Connect Camino-108/108W to your Windows PC using the provided USB cable. A message bubble should appear on your PC's Taskbar.



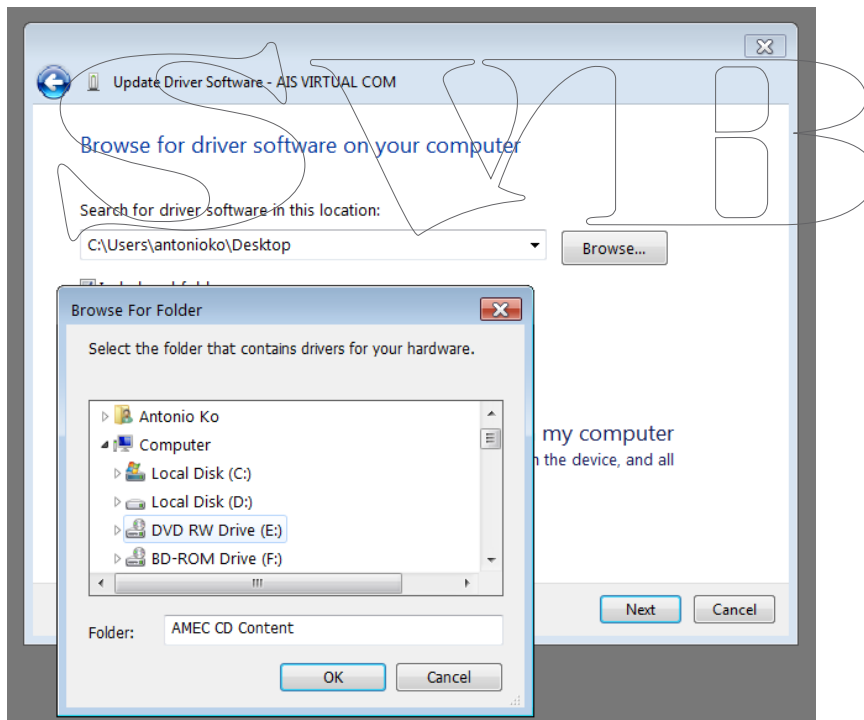
NOTE: If the new Hardware Found Wizard popup does not appear when you plug in Camino-108/108W, go into Device Manager and look for the interface. In Windows XP, Vista or 7, you can typically find the Device Manager by RIGHT-CLICKING on **Control Panel** then select **Device Manager**. Your Camino-108/108W USB Interface should be under Universal Serial Bus (USB) Controllers or under Other Devices. Please refer to Step 1.1.10 in the instructions below.

- 1.1.4** Click the Taskbar.

1.1.5 A Window like below will appear.

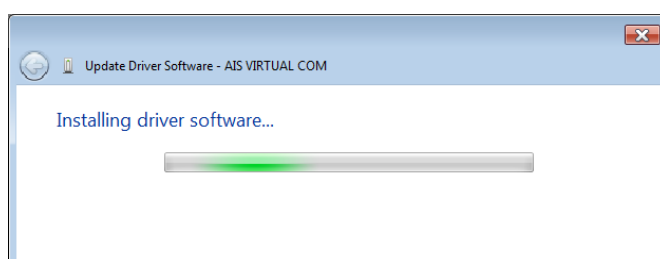


1.1.6 Click on “Browse” my computer for driver software. The following dialog should appear:

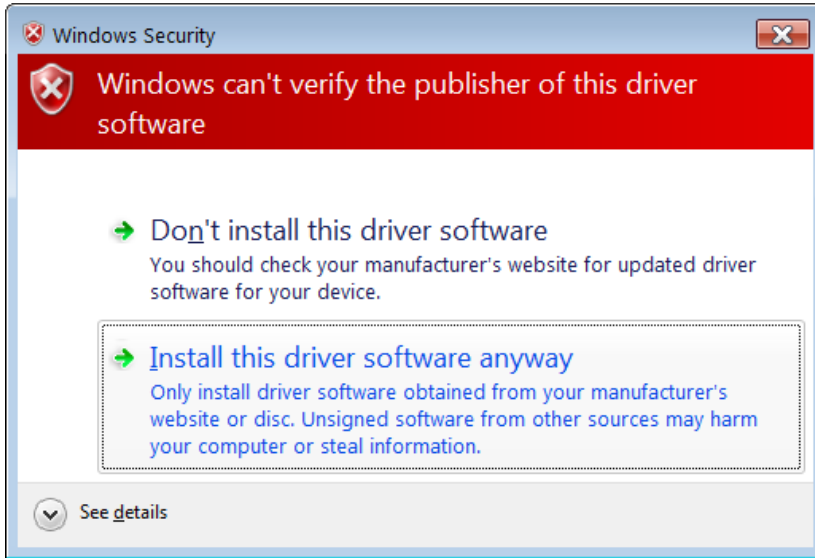


Select your PC CD/DVD slot where the CD Driver is located and then click OK.

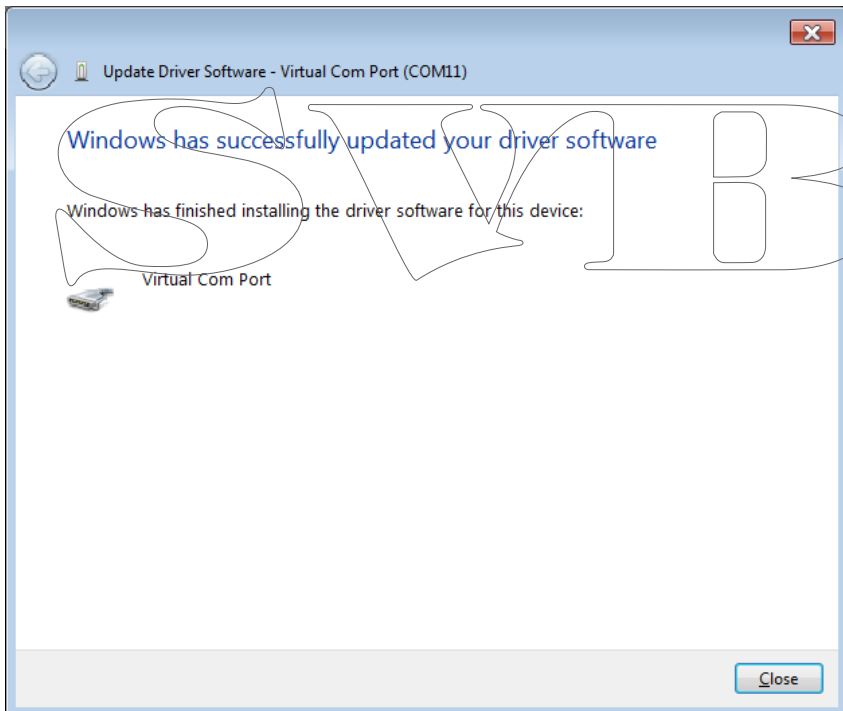
1.1.7 The installation should start shortly.



1.1.8 If the following window appear simply Click on “Install this driver software anyway” to continue the installation.

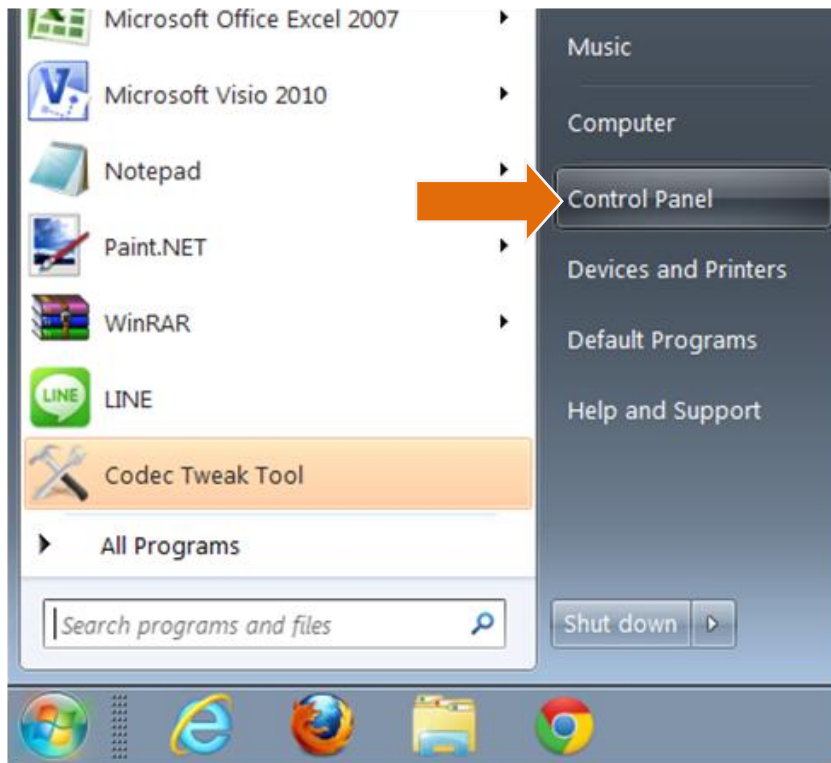


1.1.9 The following window will appear when the Driver is successfully installed.

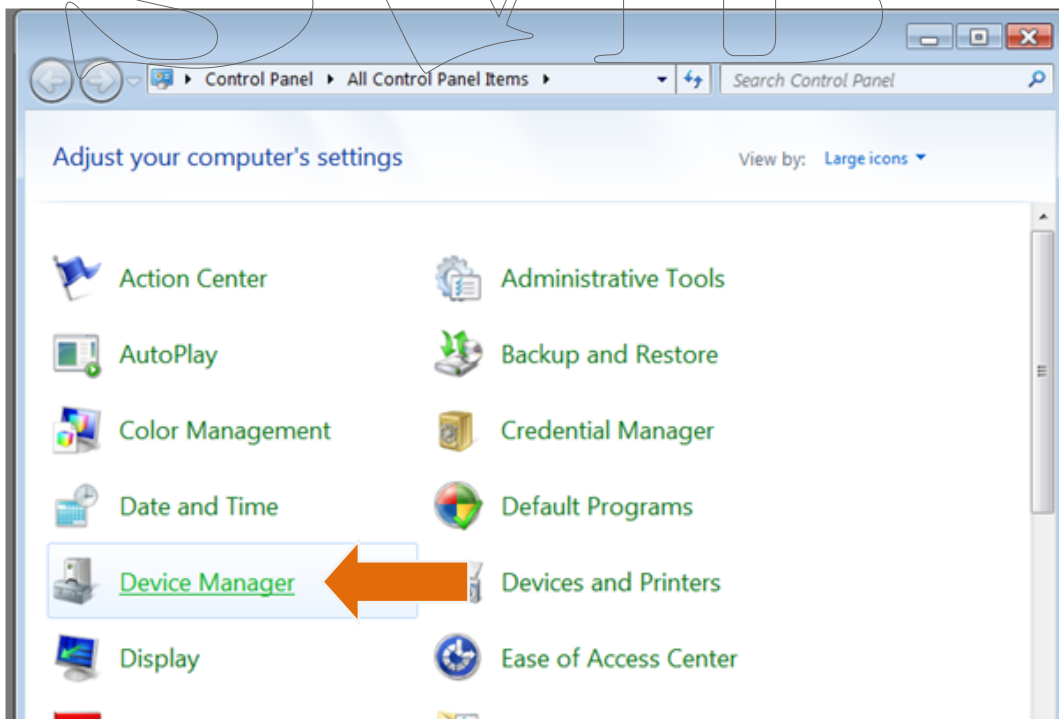


If the new Hardware Found Wizard popup does not appear when you plug in Camino-108/108, please follow instructions below.

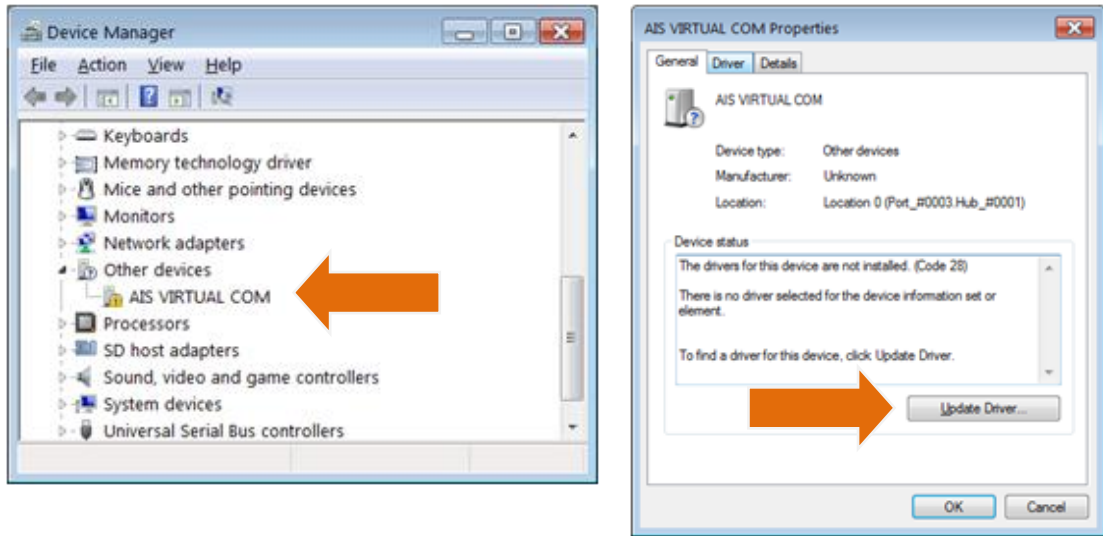
1.1.10 Go to Start and click on **Control Panel** as shown in the screenshot on the right.



1.1.11 The **Control Panel** Window will appear. Please select **Device Manager** Setting as shown in the screenshot below.



1.1.12 Now, simply select the Camino-108/108W device and right click on it then click **Update Driver Software** as shown in the screenshot below.

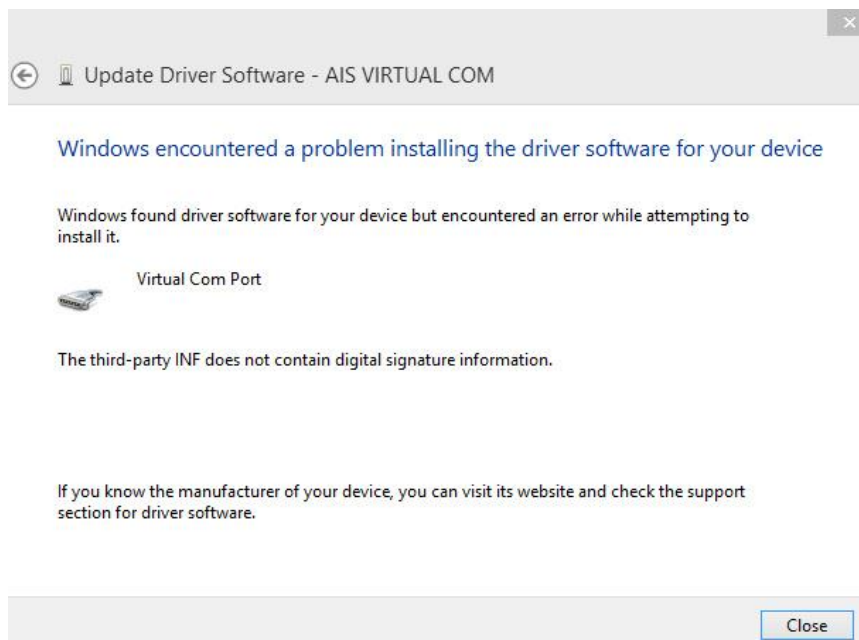


1.1.13 Please return to process 1.1.6 to continue with the Driver Installation.

1.2 Windows 8 and 8.1

When installing the USB driver of your new transponder in Windows 8/8.1, you may encounter the screen below that installation procedure is blocked due to lack of digital signature. The following instruction shows how to install the USB driver by bypassing the restrictions in Windows 8/8.1.

Please be confident that the USB driver is tested to be compatible with Windows 8/8.1. AMEC is working closely with driver publisher to have the driver digitally signed. We are sorry for the inconvenience and thank you for your understanding.




1.2.1 Installation Procedure

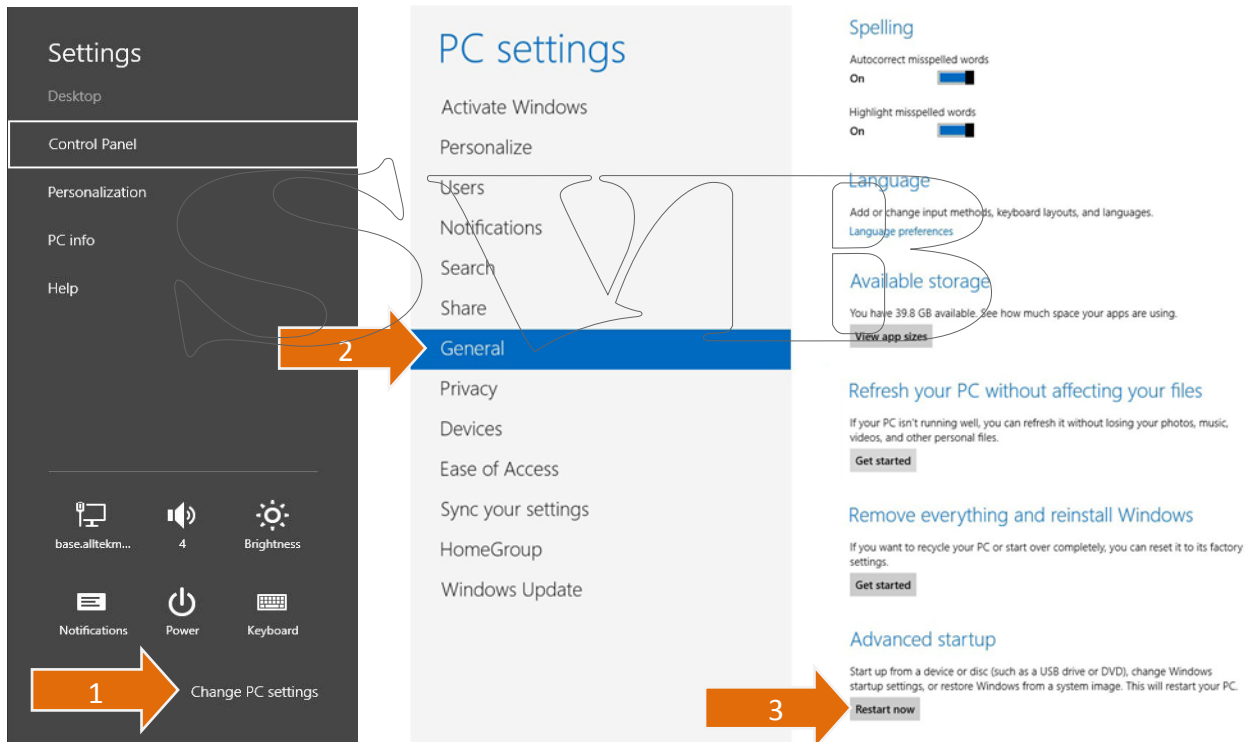
Please familiarize with the manual content before begin installation. Use the following recommended steps for installation.

1. Insert the Driver CD to your PC CD/DVD Slot.
2. Connect the Camino-108/108W unit to a power source.
3. Connect Camino-108/108W to your Windows PC using the provided USB cable. A message bubble should appear on your PC's Taskbar.

1.2.2 Disabling Driver Signature Verification on Windows 8


If you used Windows 8.1 please skip this section and go directly to section 1.2.3.

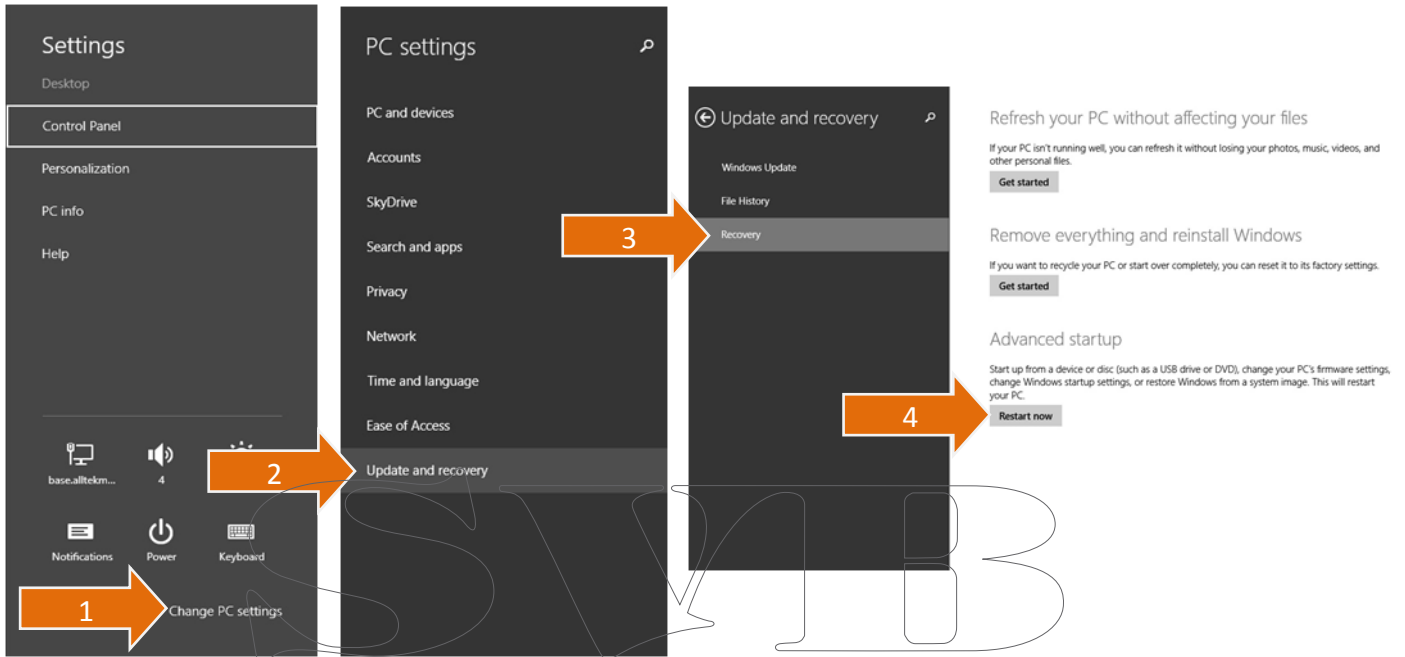
1. Press the Win () + I to launch the Charm Bar.
2. Click **Change PC Settings**
3. Click **General**
4. On **Advance startup** click “Restart now”



1.2.3 Disabling Driver Signature Verification on Windows 8.1

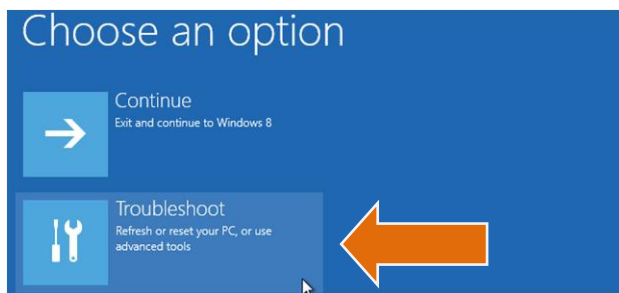
If you used Windows 8 please skip this section and go directly to section 1.2.4.

1. Press the Win () + I to launch the Charm Bar.
2. Click **Change PC Settings**
3. Click **Update and recovery**
4. Within Update and recovery go to **Recovery** Section and on **Advance startup** click “Restart now”

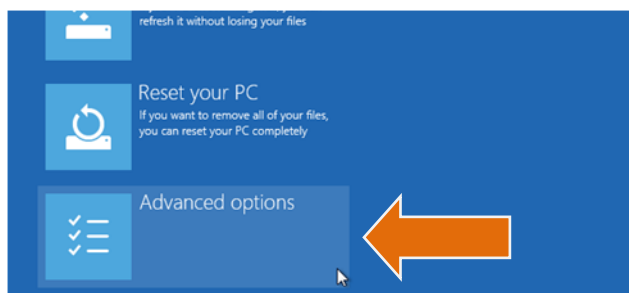


1.2.4 Disabling Driver Signature Verification

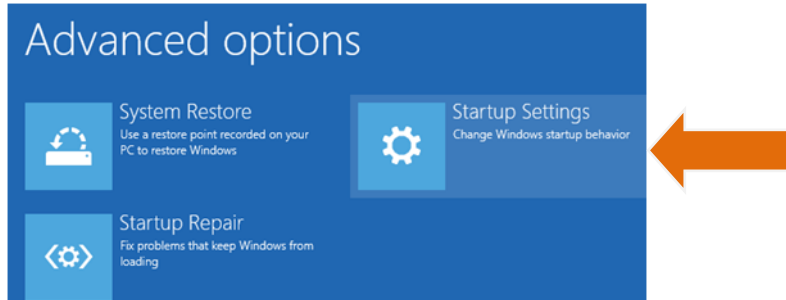
1. Once your Computer is rebooted, click **Troubleshoot** option



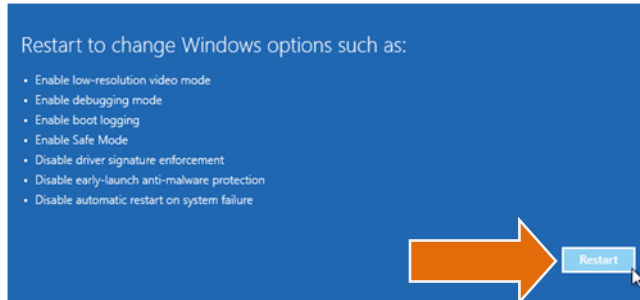
2. Click **Advance options**



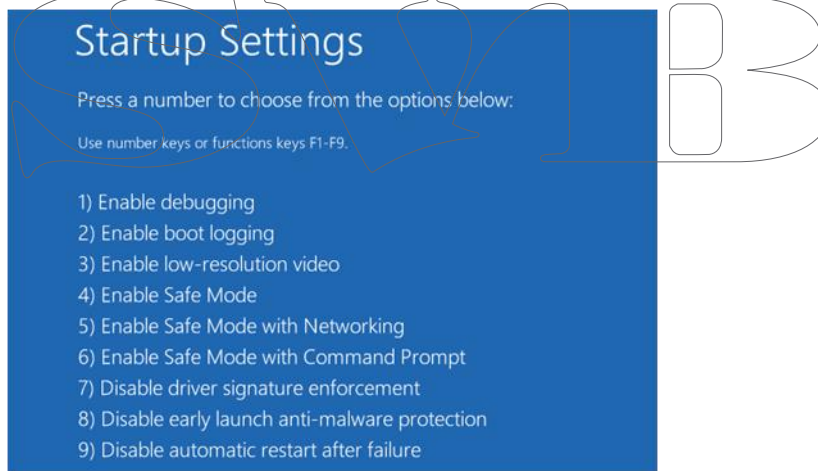
3. Then **Startup Settings**



4. And **Restart** again



5. After the reboot is done you will be presented a list of **Startup Settings** that you can change. Click on **“Disable driver signature enforcement”**. To choose this setting, you must press the **F7** key to continue booting to Windows 8/8.1 with digital sign enforcement disabled.



6. Now you can Install the Driver.