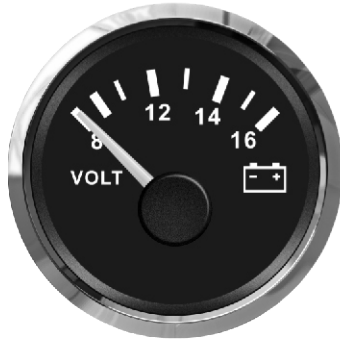


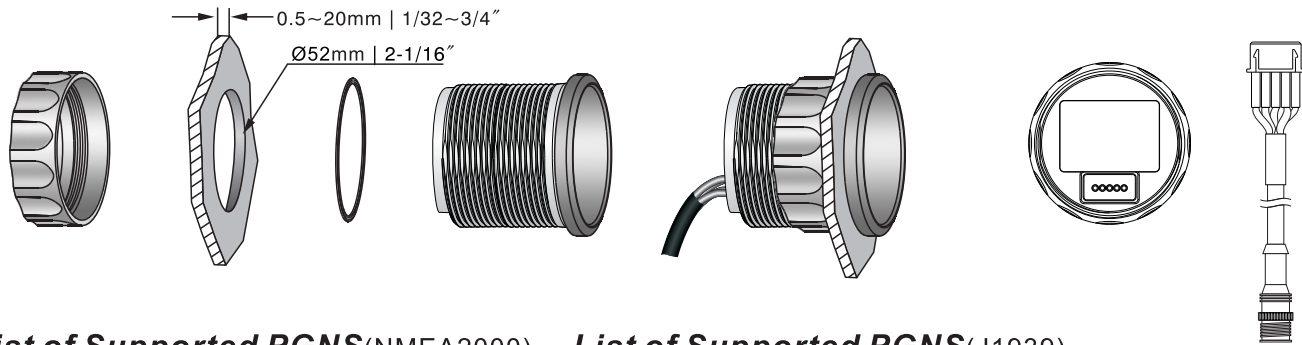
Other Gauge Owner's Manual



Installation

1. Cut a $\phi 52\text{mm}$ hole on panel, and insure there is enough space behind panel for gauge and harnesses mounting.
2. Assemble the seal ring into gauge, then mount the gauge into the hole on panel, screw tightly with fastening ring.
3. Connect the cables referring to wires diagram(standard NMEA2000 cable)

Wiring Diagram



List of Supported PGNS(NMEA2000)

| PGN | Data |
|-----------------------------------|---|
| 059392 (0xE800) | ISO acknowledge |
| 059904 (0xEA00) | ISO request |
| 060928 (0xEE00) | ISO address claim |
| 126996 (0x1F014) | Product information |
| 127489 (0x1F201) | Engine oil pressure |
| Engine parameters dynamic | Engine coolant temperature |
| 127508(0x1F214) Battery Status | Battery voltage |
| 127505(0x1F211) Fluid levels | Fuel level /fresh level/ black water level |

List of Supported PGNS(J1939)

| PGN | Data |
|-------|----------------------|
| 65276 | Fuel Level |
| 65271 | Electrical Potential |
| 65262 | Engine Coolant Temp |
| 65263 | Engine Oil Pressure |
| 65263 | Coolant Level |

Note:

1. Fuel (engine fuel)Pressure Gauge(engine fuel), water (cooling water) temp gauge only applicable for single engine or dual engine port; that is Engine Instance = 0x00(PGN = 0X1F201).
2. Water level gauge, fuel level gauge, HTG only applicable for Fluid Instance = 0x00(PGN=0X1F211).
3. Instance can be set by KUS setup tool.