



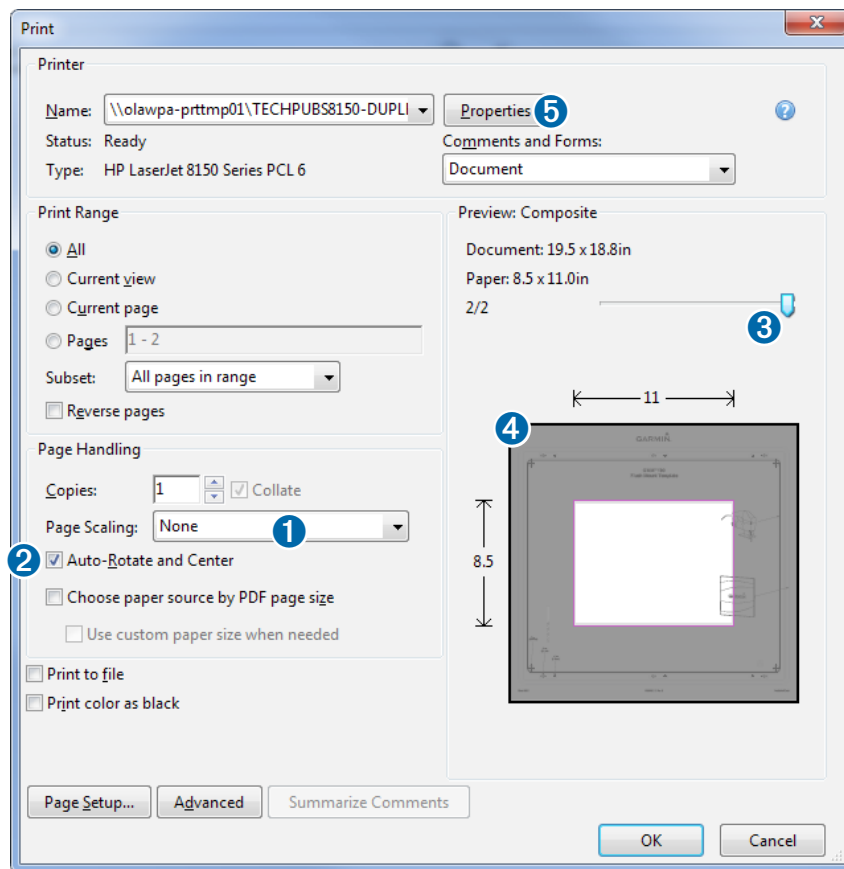
Printing a Mounting Template

NOTICE

It is not recommended that you print a mounting template on your own. Use the template that came in the product box.

If you do print the template, you must follow these instructions for printing a mounting template precisely. To print large templates, you need large enough paper and printer. Failure to have the correct sized paper and printer, or a failure to follow these instructions, may result in an incorrectly sized template and therefore an incorrect cutout (too large or too small) on the mounting surface of your boat.

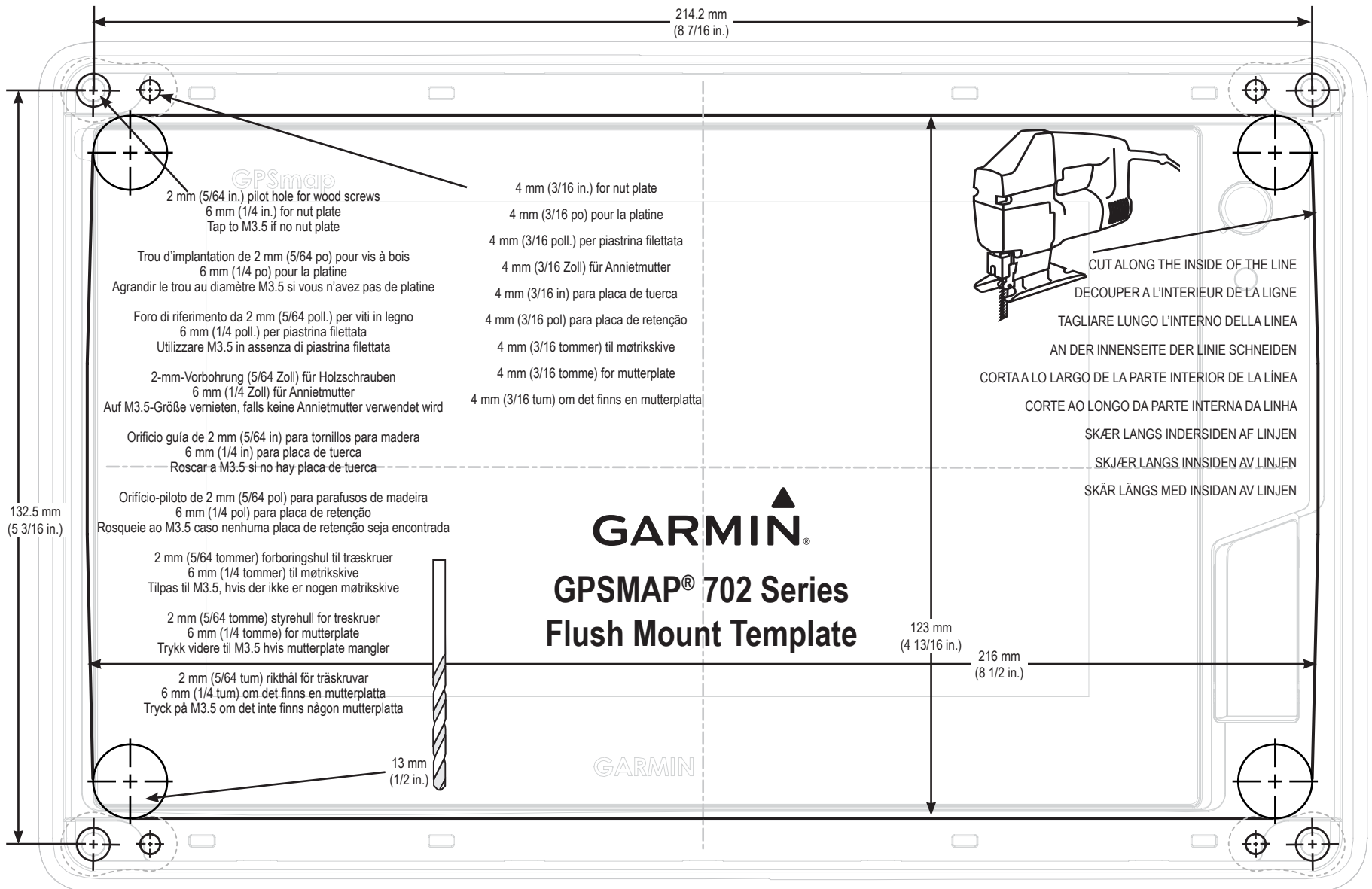
- 1 Select **File > Print**.



- 2 Select **None** for **Page Scaling** ①.
- 3 Ensure the check mark is next to **Auto-Rotate and Center** ②.
- 4 Drag the arrow ③ to the right, to view page 2 in the window below.
- 4 Verify that the paper size is larger than the template ④.
In this example, the paper is not larger than the template.
- 5 If the paper size is not large enough, select **Properties** ⑤ and select a **Page Size** that is larger than the template.

NOTICE

Garmin is not responsible for any damages or expenses resulting from a miscut mounting surface arising from a failure to follow these instructions.



214.2 mm
(8 7/16 in.)

132.5 mm
(5 3/16 in.)

GPSmap
2 mm (5/64 in.) pilot hole for wood screws
6 mm (1/4 in.) for nut plate
Tap to M3.5 if no nut plate

Trou d'implantation de 2 mm (5/64 po) pour vis à bois
6 mm (1/4 po) pour la platine
Agrandir le trou au diamètre M3.5 si vous n'avez pas de platine

Foro di riferimento da 2 mm (5/64 poll.) per viti in legno
6 mm (1/4 poll.) per piastrina filettata
Utilizzare M3.5 in assenza di piastrina filettata

2-mm-Vorbohrung (5/64 Zoll) für Holzschrauben
6 mm (1/4 Zoll) für Anniemutter
Auf M3.5-Größe vernieten, falls keine Anniemutter verwendet wird

Orificio guida de 2 mm (5/64 in) para tornillos para madeira
6 mm (1/4 in) para placa de tuerca
Roscar a M3.5 si no hay placa de tuerca

Orificio-piloto de 2 mm (5/64 pol) para parafusos de madeira
6 mm (1/4 pol) para placa de retenção
Rosqueie ao M3.5 caso nenhuma placa de retenção seja encontrada

2 mm (5/64 tommer) forboringshul til træskruer
6 mm (1/4 tommer) til møtrikskive
Tilpas til M3.5, hvis der ikke er nogen møtrikskive

2 mm (5/64 tomme) styrehull for treskruer
6 mm (1/4 tomme) for mutterplate
Trykk videre til M3.5 hvis mutterplate mangler

2 mm (5/64 tum) rikthål för träskruvar
6 mm (1/4 tum) om det finns en mutterplatta
Tryck på M3.5 om det inte finns någon mutterplatta

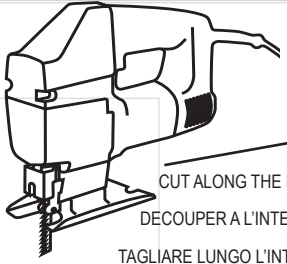
13 mm
(1/2 in.)

4 mm (3/16 in.) for nut plate
4 mm (3/16 po) pour la platine
4 mm (3/16 poll.) per piastrina filettata
4 mm (3/16 Zoll) für Anniemutter
4 mm (3/16 in) para placa de tuerca
4 mm (3/16 pol) para placa de retenção
4 mm (3/16 tommer) til møtrikskive
4 mm (3/16 tomme) for mutterplate
4 mm (3/16 tum) om det finns en mutterplatta

GARMIN®

**GPSMAP® 702 Series
Flush Mount Template**

GARMIN



CUT ALONG THE INSIDE OF THE LINE
DECOUPER A L'INTERIEUR DE LA LIGNE
TAGLIARE LUNGO L'INTERNO DELLA LINEA
AN DER INNENSEITE DER LINIE SCHNEIDEN
CORTA A LO LARGO DE LA PARTE INTERIOR DE LA LÍNEA
CORTE AO LONGO DA PARTE INTERNA DA LINHA
SKÆR LANGS INDERSIDEN AF LINJEN
SKJÆR LANGS INNSIDEN AV LINJEN
SKÄR LÅNGS MED INSIDAN AV LINJEN

123 mm
(4 13/16 in.)

216 mm
(8 1/2 in.)

