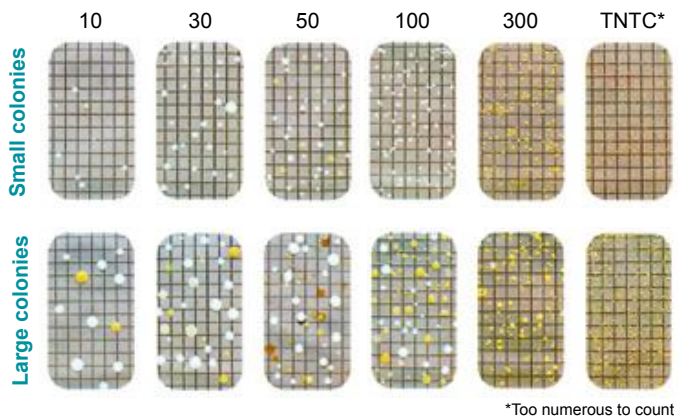


6. Evaluation

After the specified incubation time has elapsed compare the surface of the tester with the following graphics and determine the number of colony forming units (CFU).



Care should be taken when interpreting the test results as not all bacteria is harmful to human health.

As an indication, any results suggesting the presence of 100 CFU/ml or more should be a cause for concern and prompt more thorough laboratory analysis.

However, even a low count in stagnant water can lead to bacteria proliferation and therefore significant contamination.

Possible measures:

- Qualitative water analysis by an accredited laboratory
- Cleaning and Disinfection of the Water System
- Regular flushing of the water system
- Point of use filtration to prevent bacteria exiting the water system

Order via

Aqua free Solutions Ltd.

The Media Centre
7 Northumberland Street
Huddersfield, HD1 1RL, Great Britain

E-Mail: info@aquafree.co.uk

Phone: +44 (0)1484 483045

Headquarters:

Aqua free GmbH

Winsbergring 31
22525 Hamburg
Germany

E-Mail: info@aquafree.com

Phone: +49 (0)40 468999702

Fax: +49 (0)40 46899999

Your specialist in water hygiene!



www.aqua-free.com

Aqua free

AquaTest

The rapid bacteria test



AquaTest-DATA-GB-03/2018-V002



www.aqua-free.com

1. Introduction

The **AquaTest** supplied by Aqua free is used to examine the Total Bacteria count in a sample of water. Total Bacteria is a measure of the colony forming units (CFU) of bacteria in water. It is an indication of the number of live bacteria in the water which in turn gives an indication of the level of disinfection or pollution and hence the potential health risk.

It does not however give an indication of whether the bacteria present are dangerous or not.

Please read the instructions carefully prior to use.

Please note the expiry date on the back of the package.

2. Product Description

The **AquaTest** supplied by Aqua free enables the user to get a quick and easy measure of the Total Bacteria count in a sample of water. The **AquaTest** consists of a membrane filter and culture medium in a compact design which can be discretely carried in a purse, toolbox or suitcase.

3. Area of application

The **AquaTest** is particularly suited to the testing of water supplies which are not connected to the public water main. This makes the **AquaTest** ideal for testing water from storage tanks or outlets in Caravans, Motorhomes, Boats and Yachts.

In situations where a disinfectant such as chlorine is likely to be present in the water then a neutralizing agent should be used prior to testing.

4. Handling

Carefully pull the tester out of the beaker without touching the surface of the membrane.



Pour the water to be tested into the beaker (approx. 18 ml).



Insert the tester into the full beaker and leave for 2 minutes with the test surface facing downwards.



Carefully pull the tester out of the beaker and pour the water away.



Put the tester back into the empty beaker and leave it with the test surface facing downwards.

Please refer to section 5 for the incubation periods.



Remove the tester and determine the number of colony-forming units using the comparative illustrations.



5. Incubation Time

The incubation time of the **AquaTest** depends on the following ambient temperatures:

Temperature	Incubation time
Room temperature	7 days
25°C	72 hours
35°C	48 hours